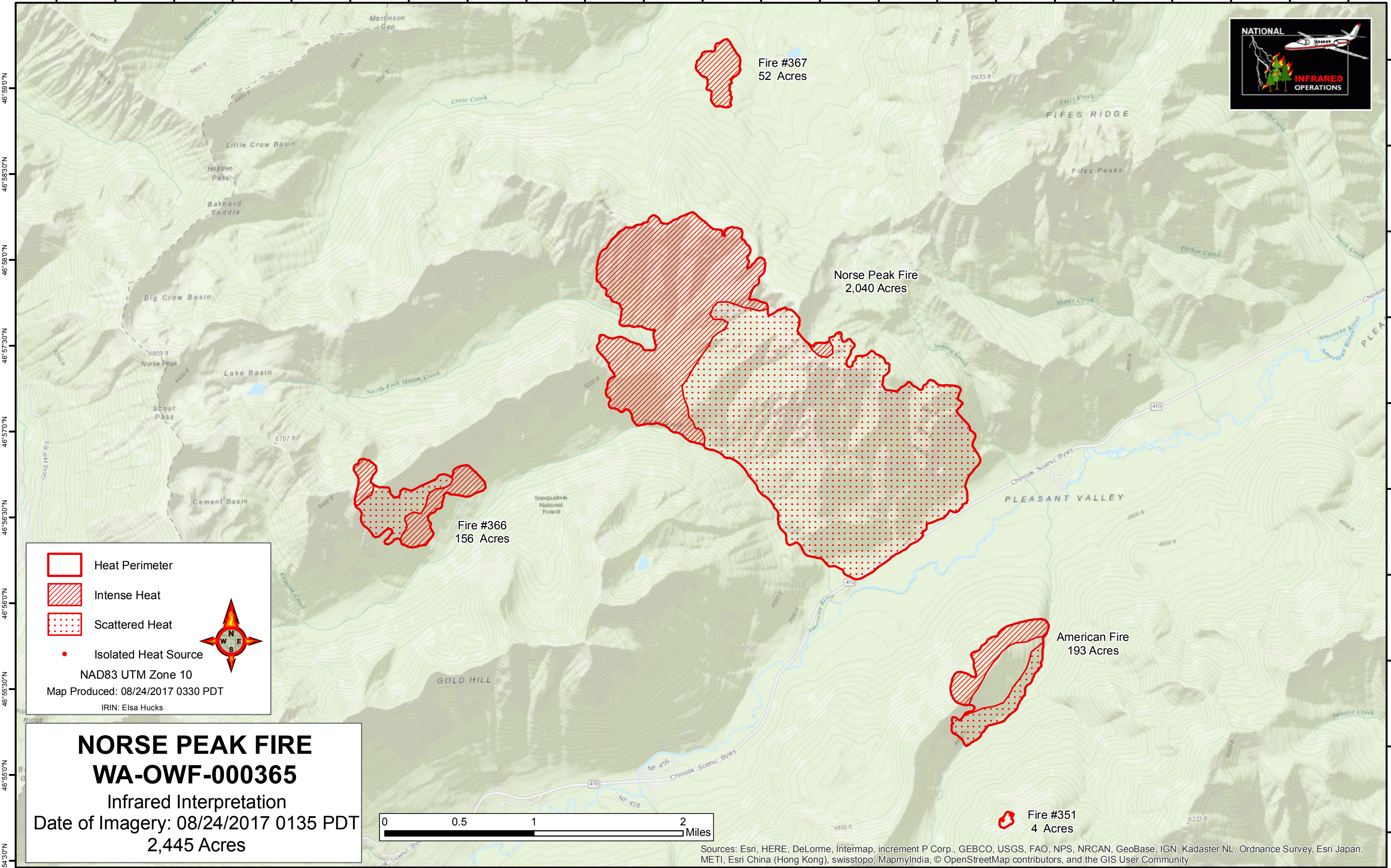






121°28'0"W 121°27'30"W 121°27'0"W 121°26'30"W 121°26'0"W 121°25'30"W 121°25'0"W 121°24'30"W 121°24'0"W 121°23'30"W 121°23'0"W 121°22'30"W 121°22'0"W 121°21'30"W 121°21'0"W 121°20'30"W 121°20'0"W 121°19'30"W 121°19'0"W 121°18'30"W 121°18'0"W 121°17'30"W 121°17'0"W



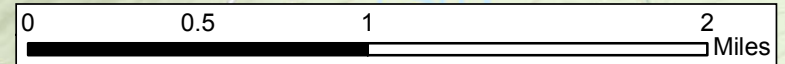
46°59'0"N  
46°58'30"N  
46°58'0"N  
46°57'30"N  
46°57'0"N  
46°56'30"N  
46°56'0"N  
46°55'30"N  
46°55'0"N  
46°54'30"N

46°59'0"N  
46°58'30"N  
46°58'0"N  
46°57'30"N  
46°57'0"N  
46°56'30"N  
46°56'0"N  
46°55'30"N  
46°55'0"N  
46°54'30"N

 Heat Perimeter  
 Intense Heat  
 Scattered Heat  
 Isolated Heat Source  
 NAD83 UTM Zone 10  
 Map Produced: 08/24/2017 0330 PDT  
 IRIN: Elsa Hucks



**NORSE PEAK FIRE**  
**WA-OWF-000365**  
 Infrared Interpretation  
 Date of Imagery: 08/24/2017 0135 PDT  
**2,445 Acres**



Sources: Esri, HERE, DeLorme, Intermap, increment P Corp., GEBCO, USGS, FAO, NPS, NRCAN, GeoBase, IGN, Kadaster NL, Ordnance Survey, Esri Japan, METI, Esri China (Hong Kong), swisstopo, MapmyIndia, © OpenStreetMap contributors, and the GIS User Community