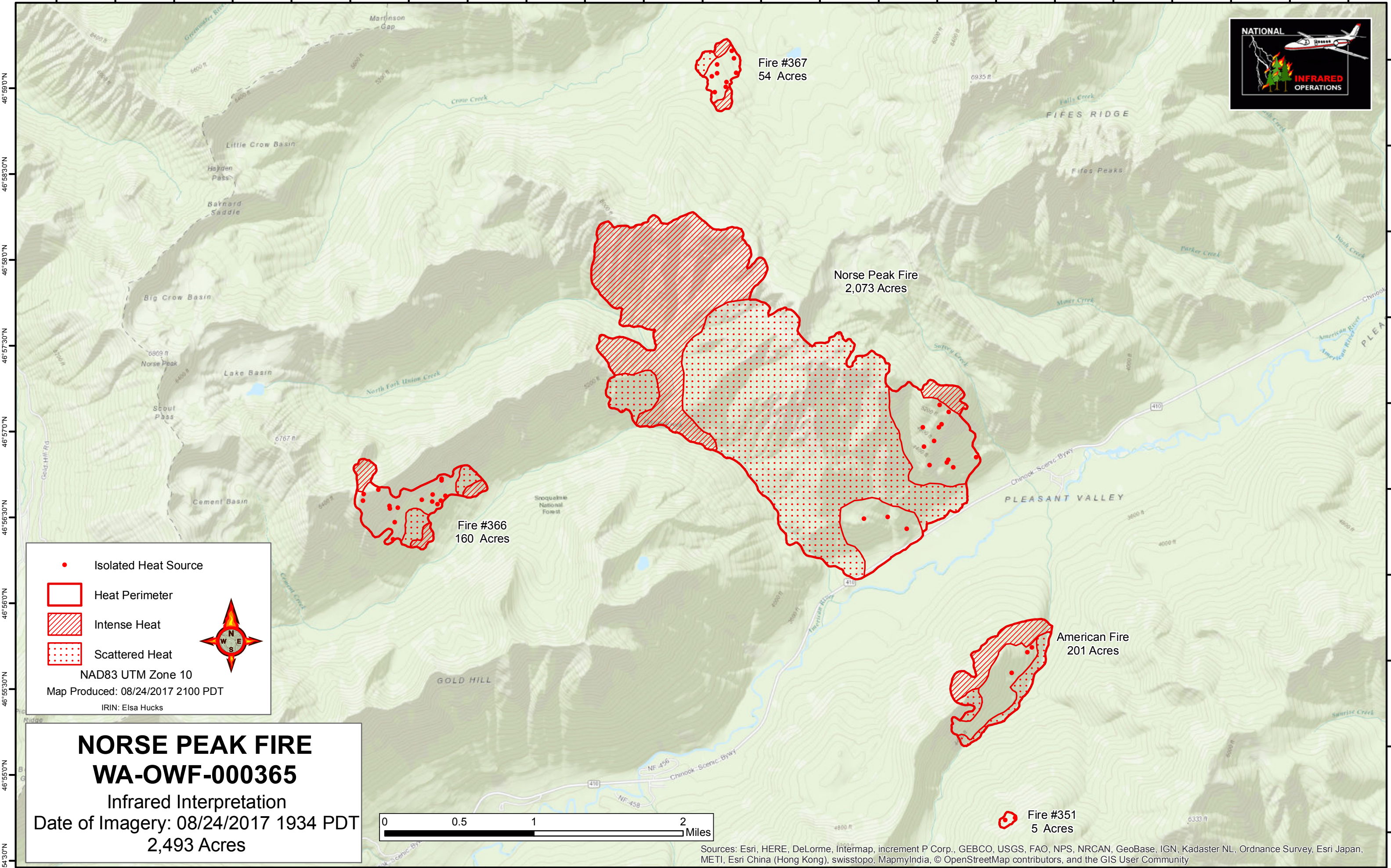


121°28'0"W 121°27'30"W 121°27'0"W 121°26'30"W 121°26'0"W 121°25'30"W 121°25'0"W 121°24'30"W 121°24'0"W 121°23'30"W 121°23'0"W 121°22'30"W 121°22'0"W 121°21'30"W 121°21'0"W 121°20'30"W 121°20'0"W 121°19'30"W 121°19'0"W 121°18'30"W 121°18'0"W 121°17'30"W 121°17'0"W



Fire #367
54 Acres

Norse Peak Fire
2,073 Acres


Fire #366
160 Acres

American Fire
201 Acres

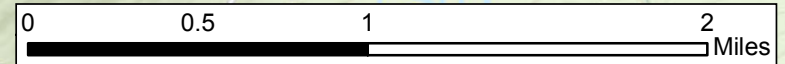
Fire #351
5 Acres

- Isolated Heat Source
- Heat Perimeter
- Intense Heat
- Scattered Heat

NAD83 UTM Zone 10
Map Produced: 08/24/2017 2100 PDT
IRIN: Elsa Hucks



NORSE PEAK FIRE
WA-OWF-000365
 Infrared Interpretation
 Date of Imagery: 08/24/2017 1934 PDT
2,493 Acres



Sources: Esri, HERE, DeLorme, Intermap, increment P Corp., GEBCO, USGS, FAO, NPS, NRCAN, GeoBase, IGN, Kadaster NL, Ordnance Survey, Esri Japan, METI, Esri China (Hong Kong), swisstopo, MapmyIndia, © OpenStreetMap contributors, and the GIS User Community

121°28'0"W 121°27'30"W 121°27'0"W 121°26'30"W 121°26'0"W 121°25'30"W 121°25'0"W 121°24'30"W 121°24'0"W 121°23'30"W 121°23'0"W 121°22'30"W 121°22'0"W 121°21'30"W 121°21'0"W 121°20'30"W 121°20'0"W 121°19'30"W 121°19'0"W 121°18'30"W 121°18'0"W 121°17'30"W 121°17'0"W