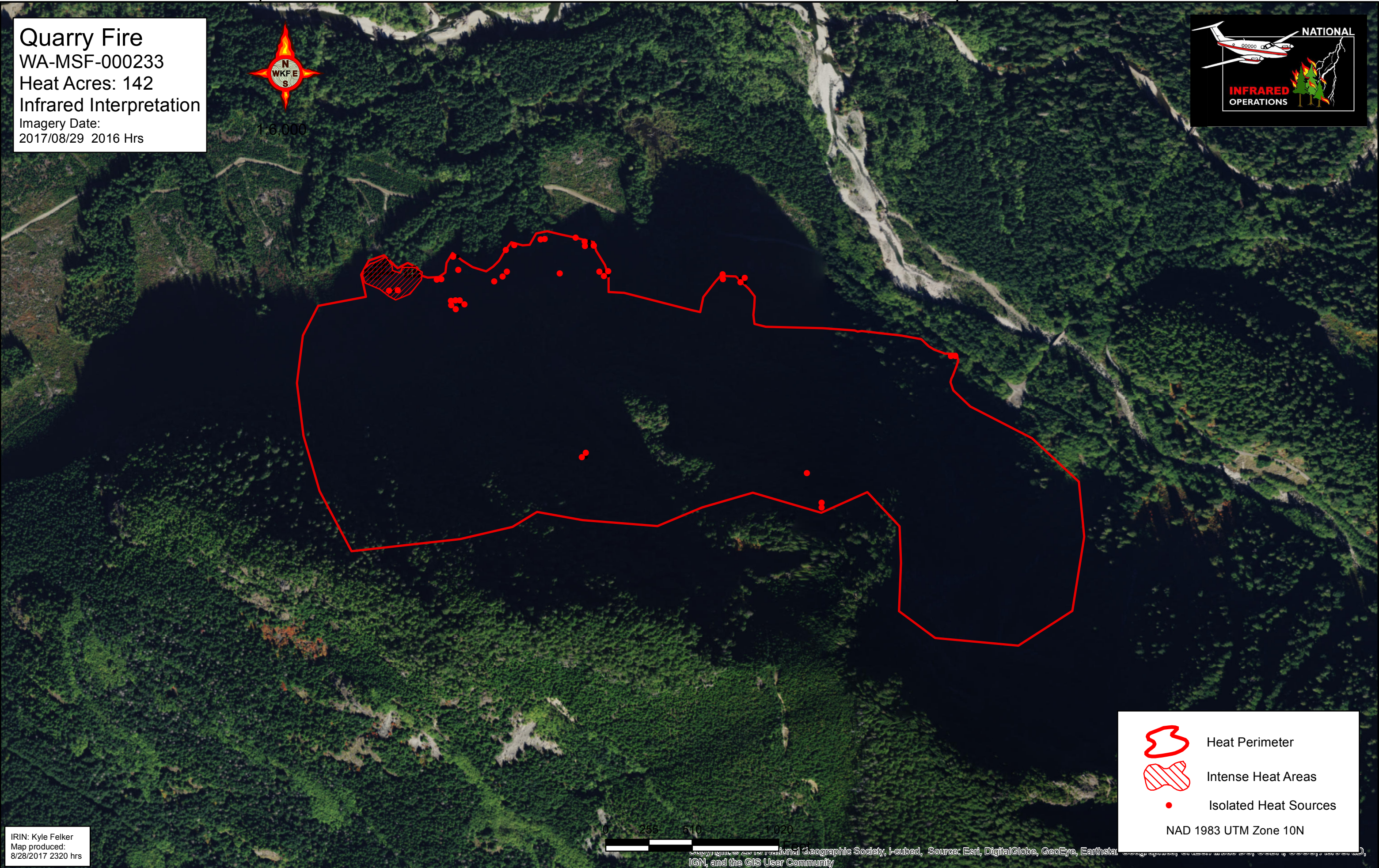
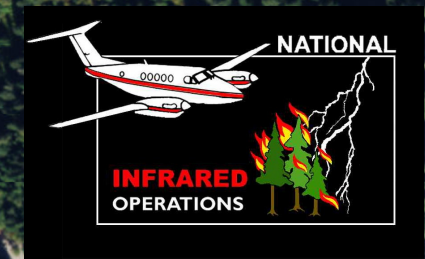


121°36'W


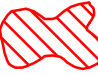

121°35'W

Quarry Fire
 WA-MSF-000233
 Heat Acres: 142
 Infrared Interpretation
 Imagery Date:
 2017/08/29 2016 Hrs



IRIN: Kyle Felker
 Map produced:
 8/28/2017 2320 hrs



-  Heat Perimeter
-  Intense Heat Areas
-  Isolated Heat Sources

NAD 1983 UTM Zone 10N

Copyright © 2017 National Geographic Society, I-cubed, Source: Esri, DigitalGlobe, GeoEye, Earthstar
 IGN, and the GIS User Community

121°36'W

121°35'W