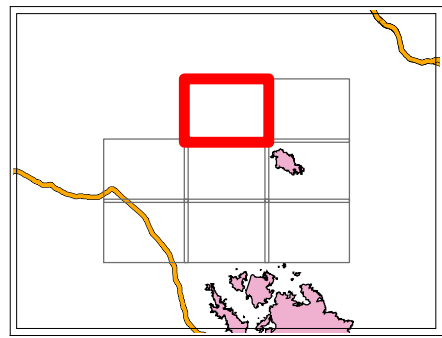


Sawmill Creek

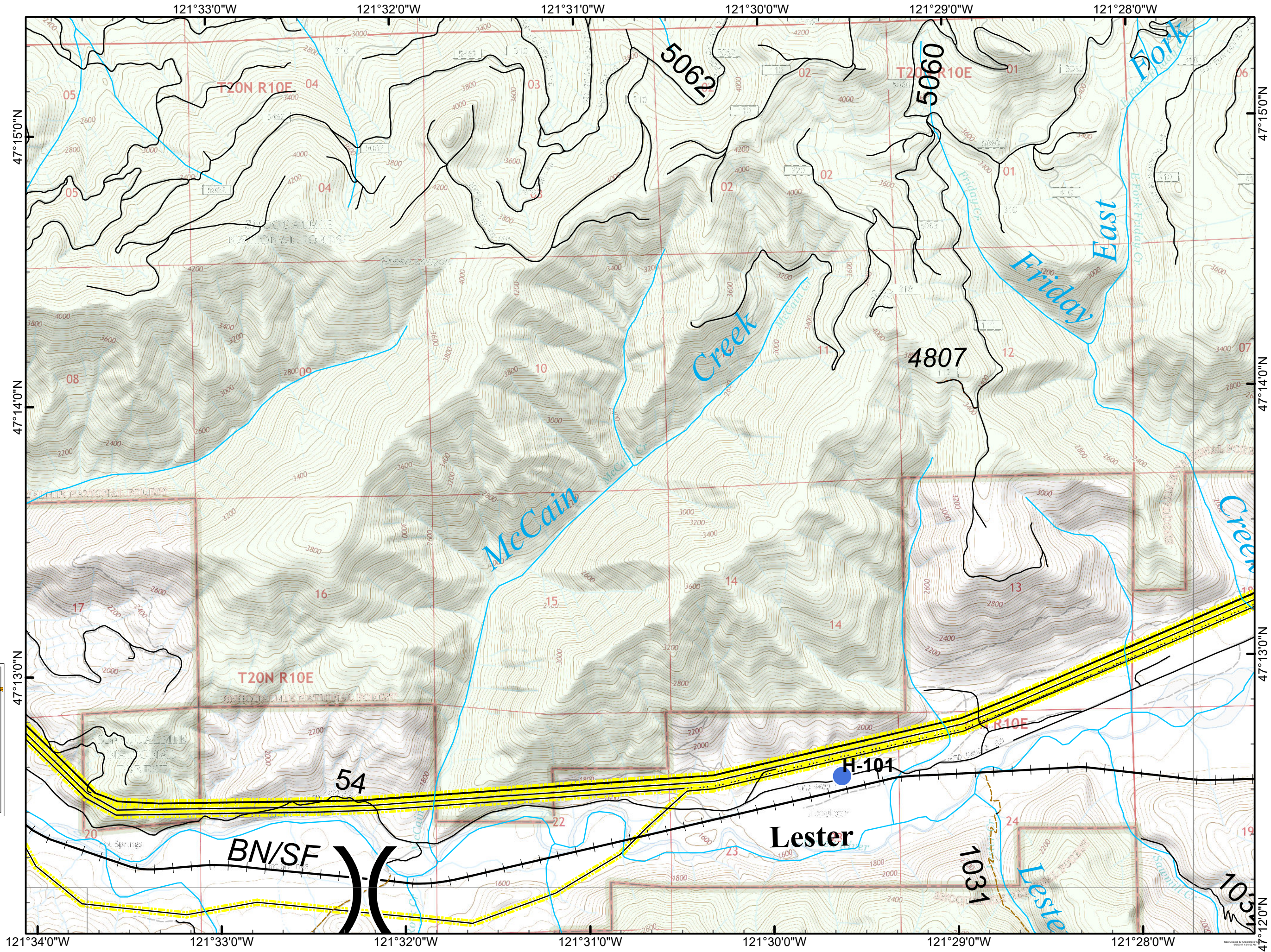
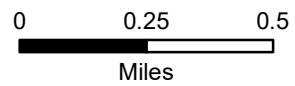
WA-SPS-177
Operations
September 9, 2017



- Helispot
- FS Road
- County Boundary
- Railroad
- River/Stream
- Transmission Lines
- Administrative Forest



NAD 83 UTM Zone 10N
1:24,000

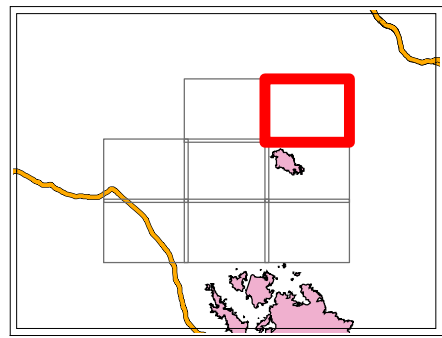


Sawmill Creek

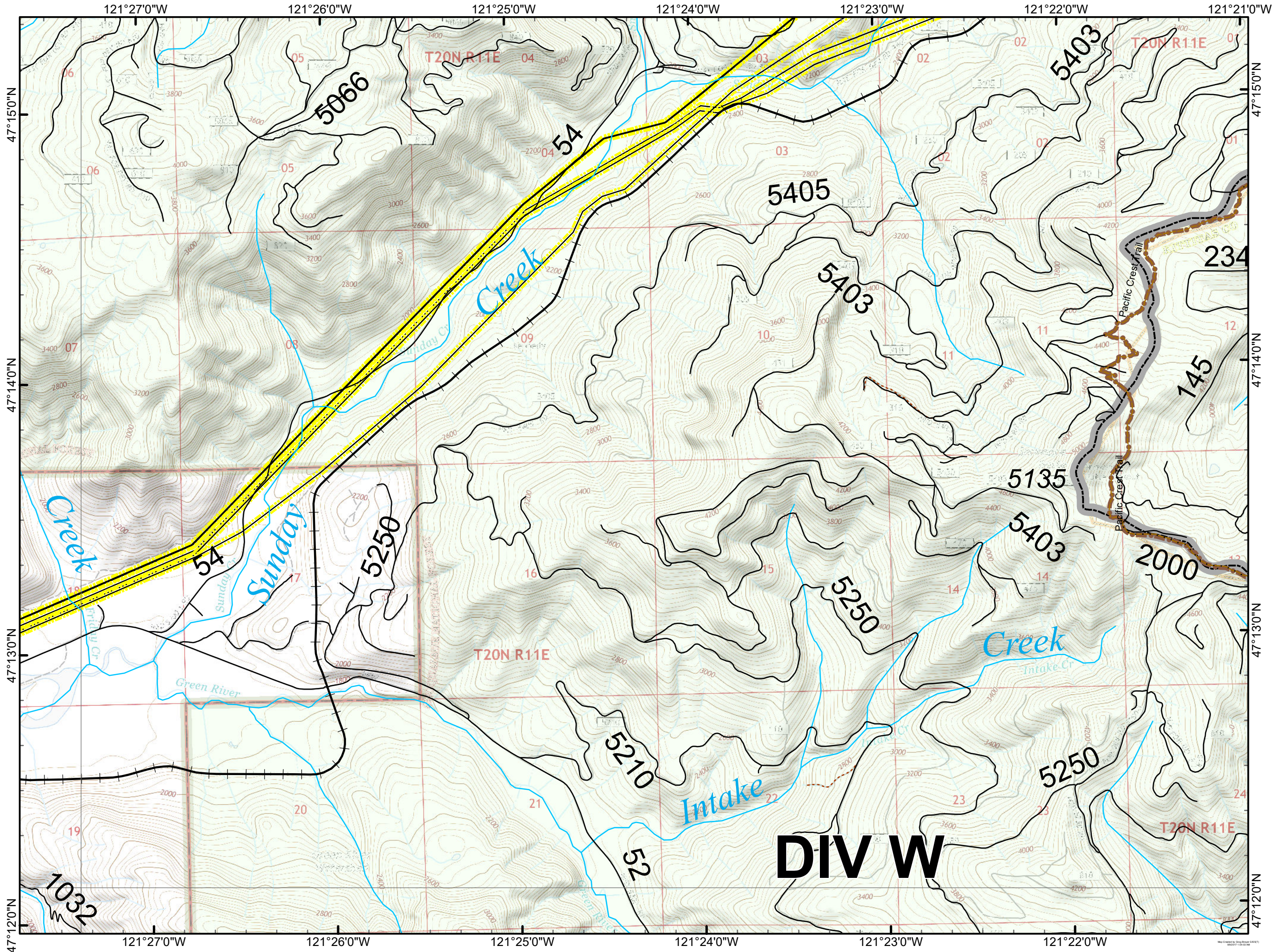
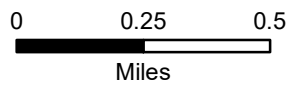
WA-SPS-177
Operations
September 9, 2017



- PCT/Cascade Crest
- FS Road
- ▭ County Boundary
- +— Railroad
- River/Stream
- Transmission Lines
- ▭ Administrative Forest



NAD 83 UTM Zone 10N
1:24,000

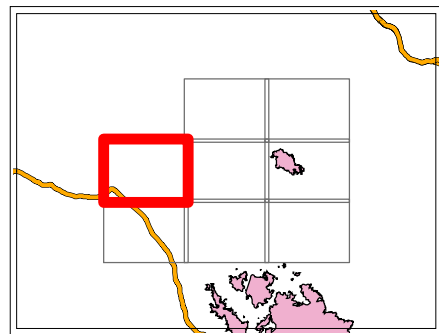


Sawmill Creek

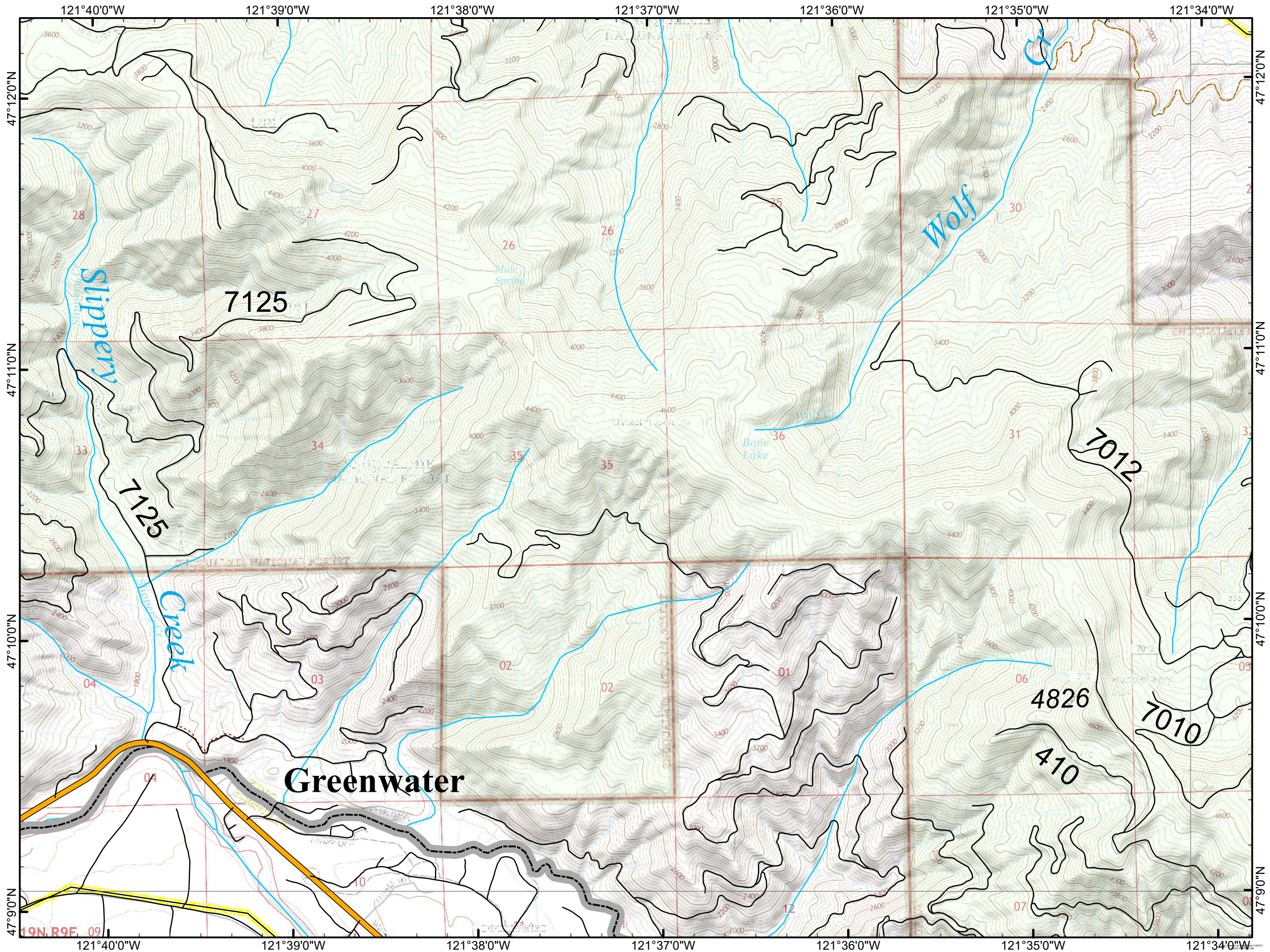
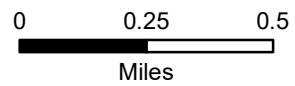
WA-SPS-177
Operations
September 9, 2017



- FS Road
- Highway
- County Boundary
- River/Stream
- Transmission Lines
- Administrative Forest



NAD 83 UTM Zone 10N
1:24,000

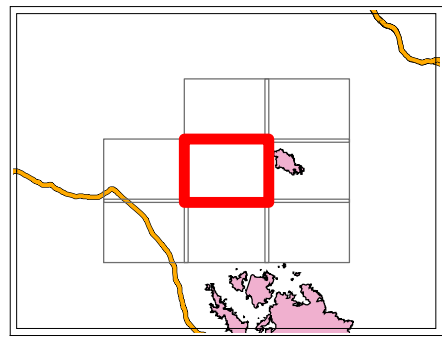


Sawmill Creek

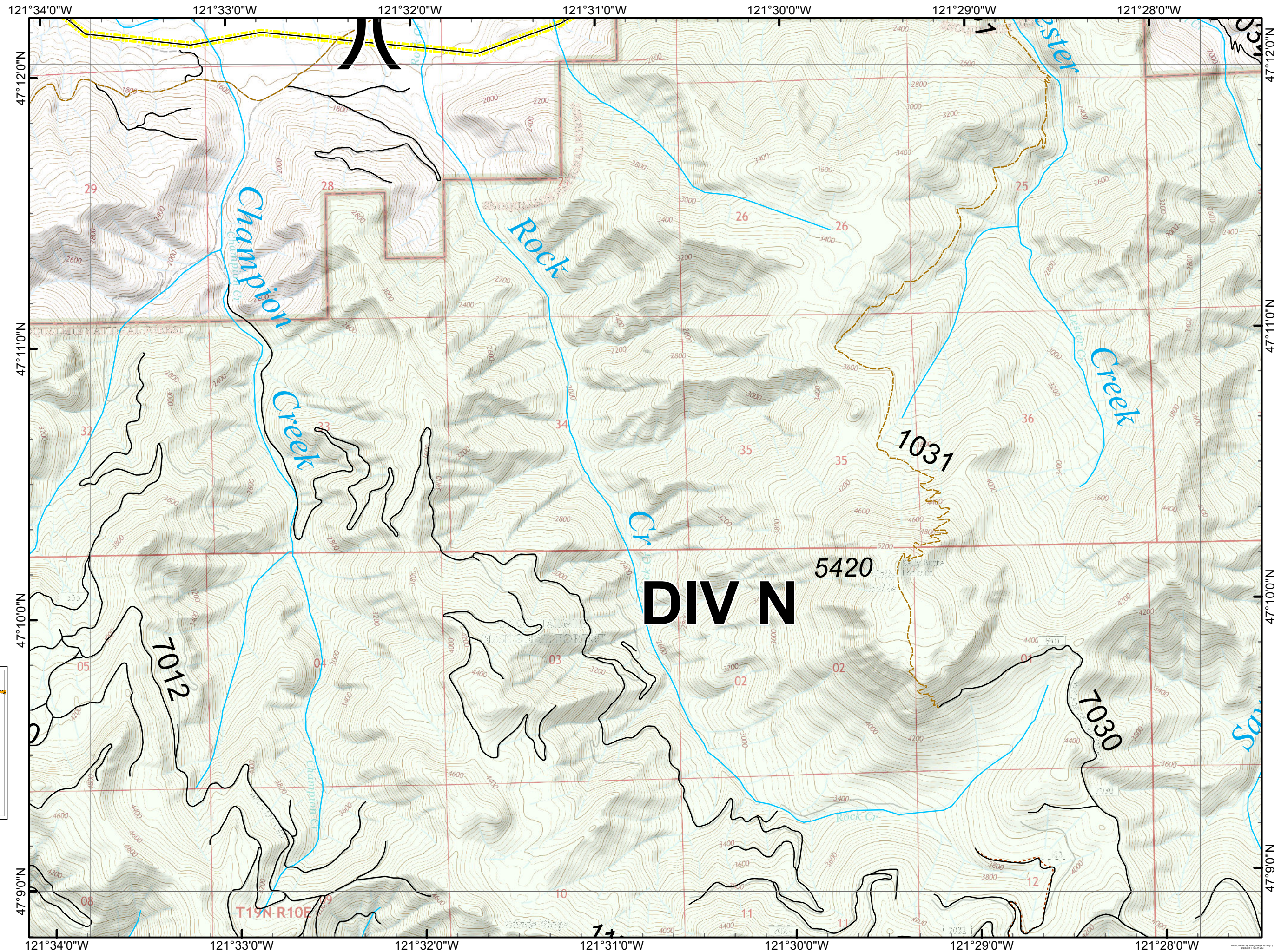
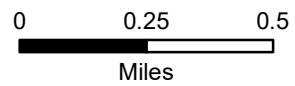
WA-SPS-177
Operations
September 9, 2017



- FS Road
- County Boundary
- River/Stream
- Transmission Lines
- Administrative Forest



NAD 83 UTM Zone 10N
1:24,000

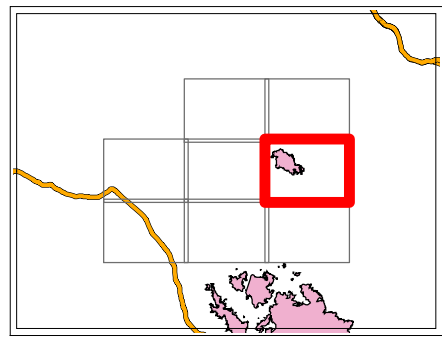


Sawmill Creek

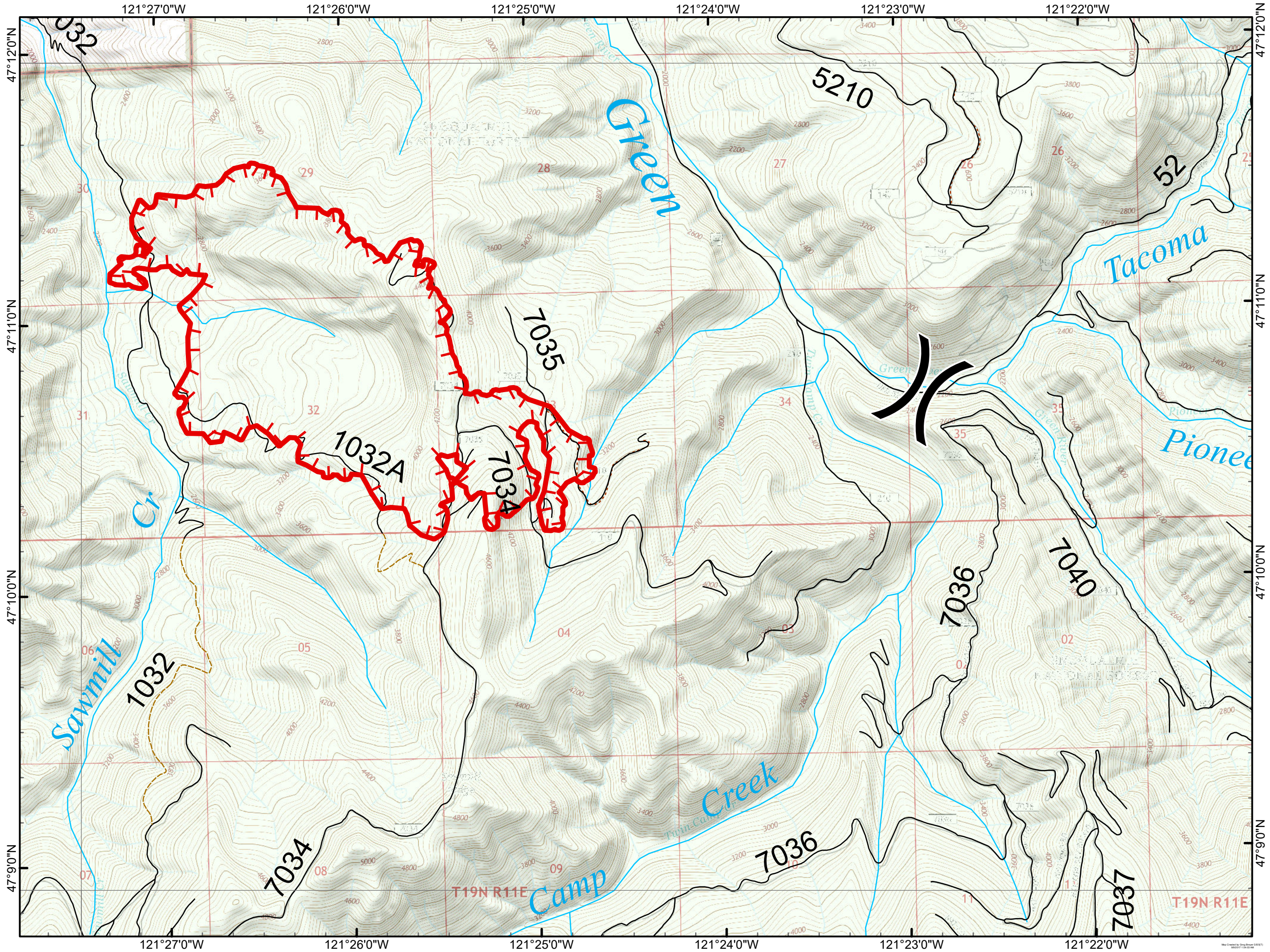
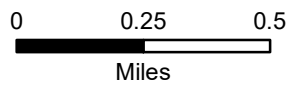
WA-SPS-177
Operations
September 9, 2017



- Uncontrolled Fireline
- FS Road
- County Boundary
- River/Stream
- Administrative Forest



NAD 83 UTM Zone 10N
1:24,000

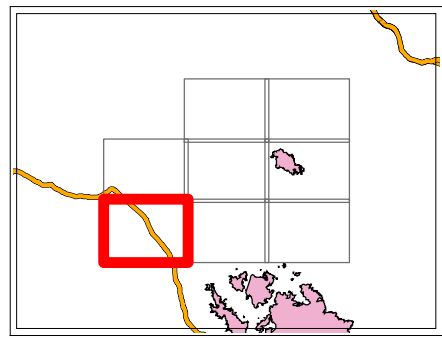


Sawmill Creek

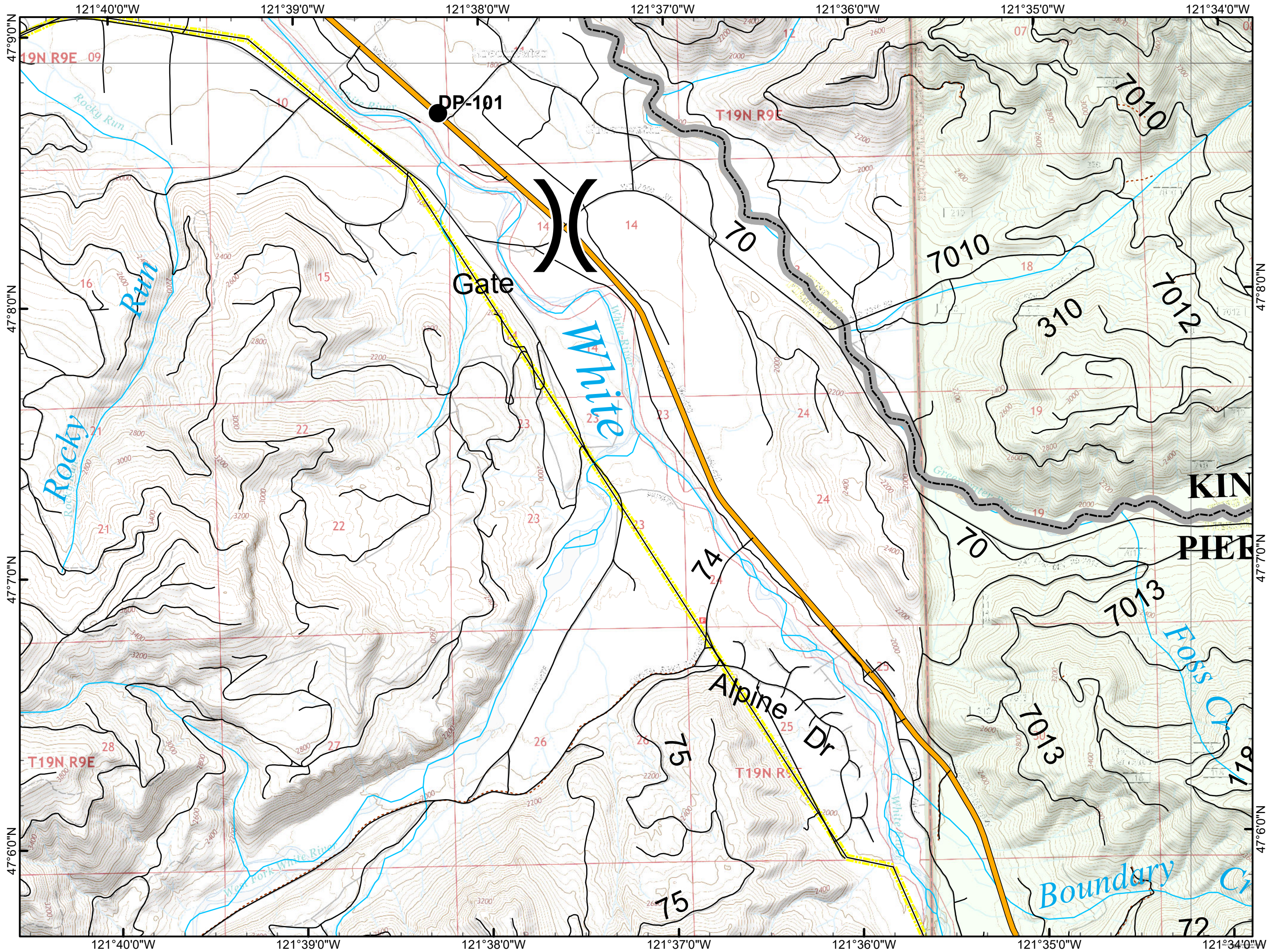
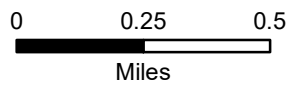
WA-SPS-177
Operations
September 9, 2017



- Drop Point
- - - FS Road
- ▬ Highway
- ▭ County Boundary
- ▬ River/Stream
- ▬ Transmission Lines
- ▭ Administrative Forest



NAD 83 UTM Zone 10N
1:24,000

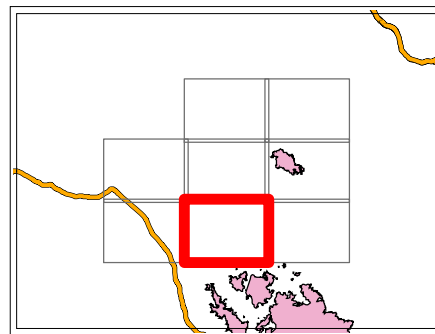


Sawmill Creek

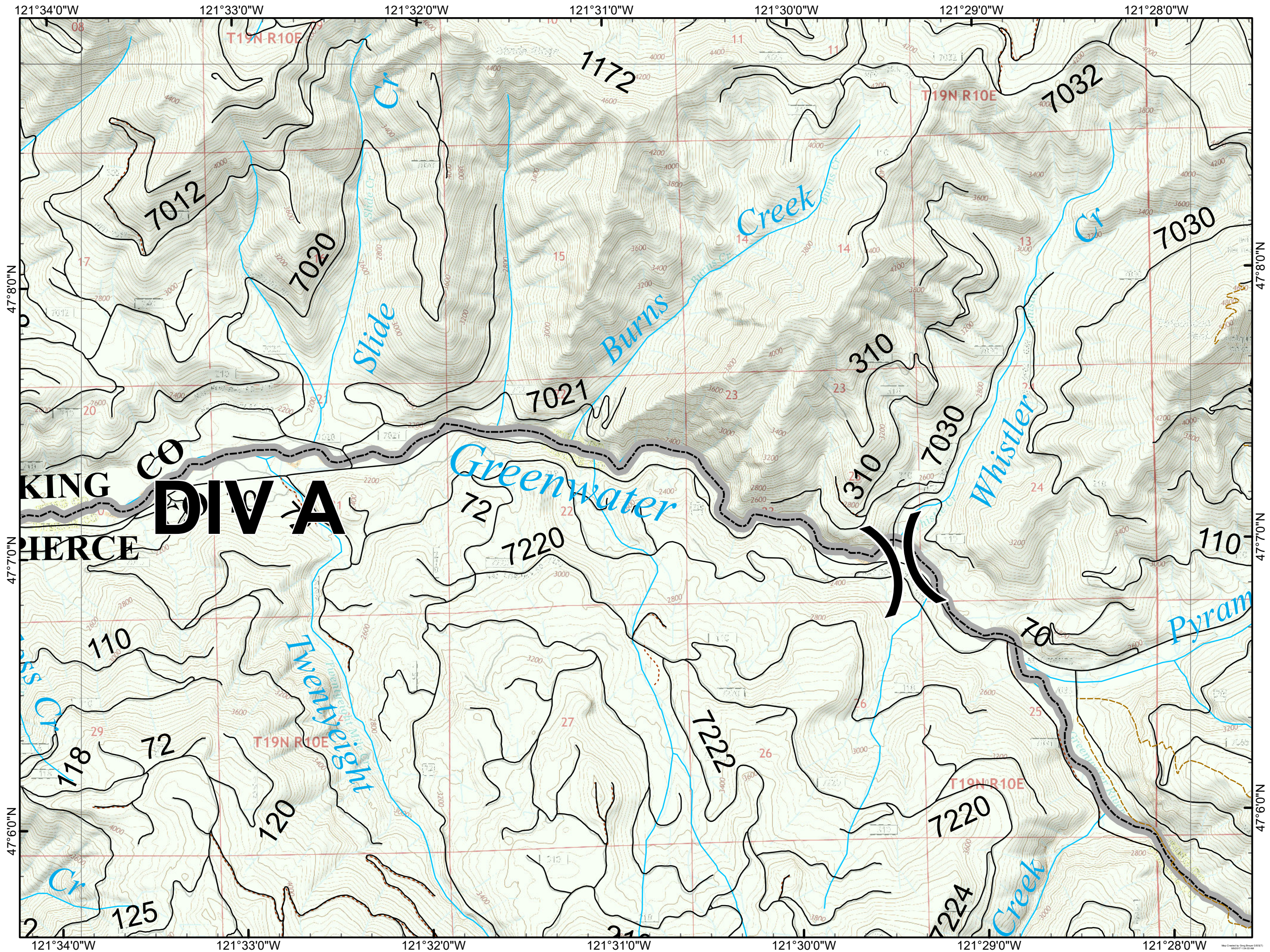
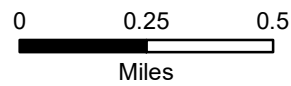
WA-SPS-177
Operations
September 9, 2017



- FS Road
- County Boundary
- River/Stream
- Administrative Forest



NAD 83 UTM Zone 10N
1:24,000

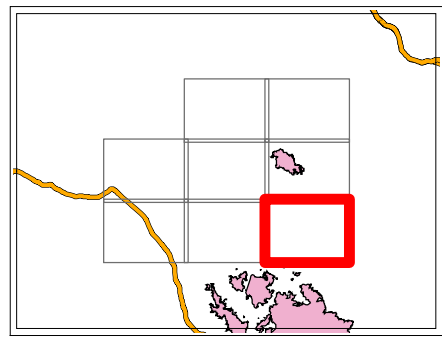


Sawmill Creek

WA-SPS-177
Operations
September 9, 2017



- Completed Line
- PCT/Cascade Crest
- FS Road
- County Boundary
- River/Stream
- Administrative Forest



NAD 83 UTM Zone 10N
1:24,000

