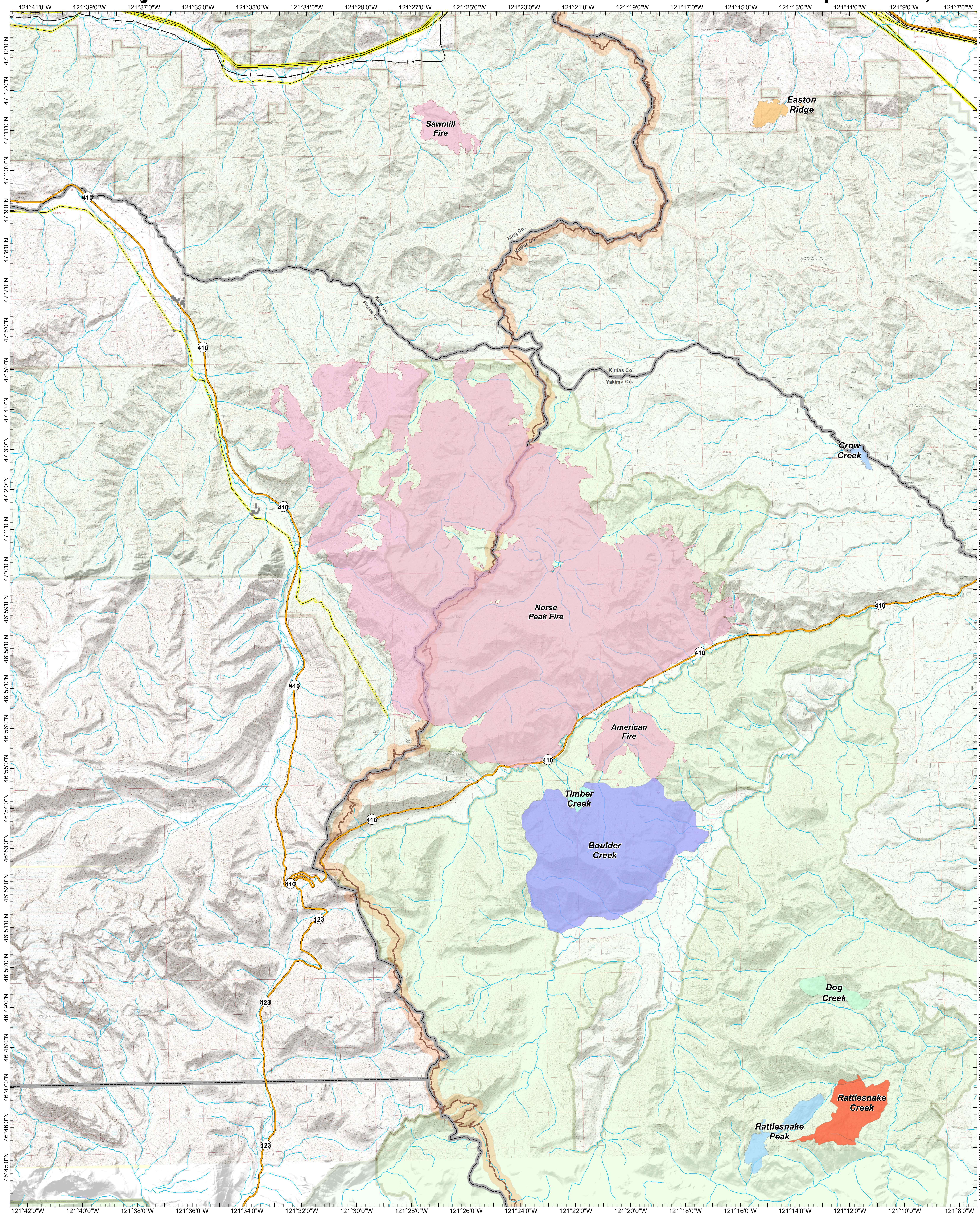


# Fire History

September 12, 2017



## Sawmill Creek

WA-SPS-177

Fire History

September 12, 2017



- |                            |                               |                        |                 |                       |
|----------------------------|-------------------------------|------------------------|-----------------|-----------------------|
| Boulder Creek, 2010, 10000 | Rattlesnake Creek, 2007, 1700 | River/Stream           | Highway         | Zone Boundary         |
| Crow Creek, 2007, 108      | Rattlesnake Peak, 2004, 780   | Transmission Lines     | County Boundary | Administrative Forest |
| Dog Creek, 2001, 540       | Timber Creek, 2012, 153       | Structures_Sawmill_Inc | Railroad        |                       |
| Easton Ridge, 2007, 350    |                               | PCT/Cascade Crest      |                 |                       |

NAD 83 UTM Zone 10N  
1:52,000

