

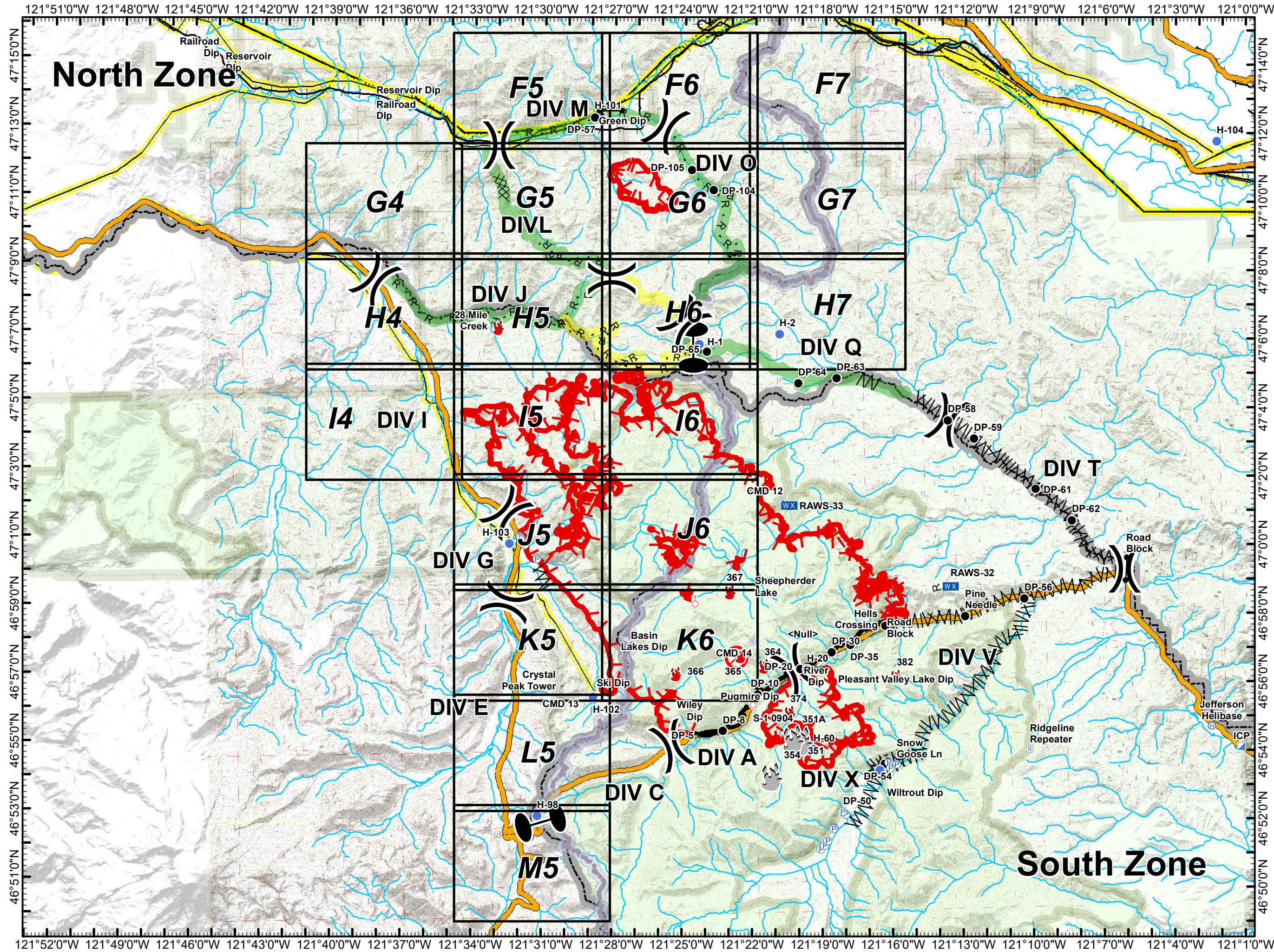
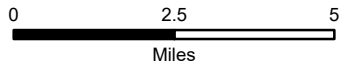
Sawmill Creek Norse Peak North Zone

WA-SPS-177
IAP
September 15, 2017

- Drop Point
- 🔥 Fire Location
- ⊗ Fire Origin
- ⊕ Helibase
- Helispot
- Hot Spot
- 📍 Incident Command Post
- WX Mobile Weather Unit
- Ⓟ Pump
- 📡 Repeater
- 🔥 Spot Fire
- Other
- ⌘ Division Break
- ⌘ Zone Break
- 🔴 Uncontrolled Fire Edge
- 🟡 Completed Line
- R - Road as Completed Line
- 🚧 Line Break Completed
- 🚧 Completed Dozer Line
- 🟡 Planned Fire Line
- Management Action Point
- Alternative
- Primary
- ✕ Road Closure
- ★ Value at Risk
- 👤 Public Trail
- 🏔️ PCT/Cascade Crest
- 🛣️ FS Road
- 🛣️ Highway
- 🗺️ County Boundary
- 🚊 Railroad
- 🌊 River/Stream
- 📡 Transmission Lines
- 🌲 Administrative Forest
- 🌲 Wilderness



NAD 83 UTM Zone 10N
1:190,000



Map Created by Greg Brown GIS/IT