

# Norse Peak

WA-OWF-000365

Index Map

IAP Map 9/19/2017

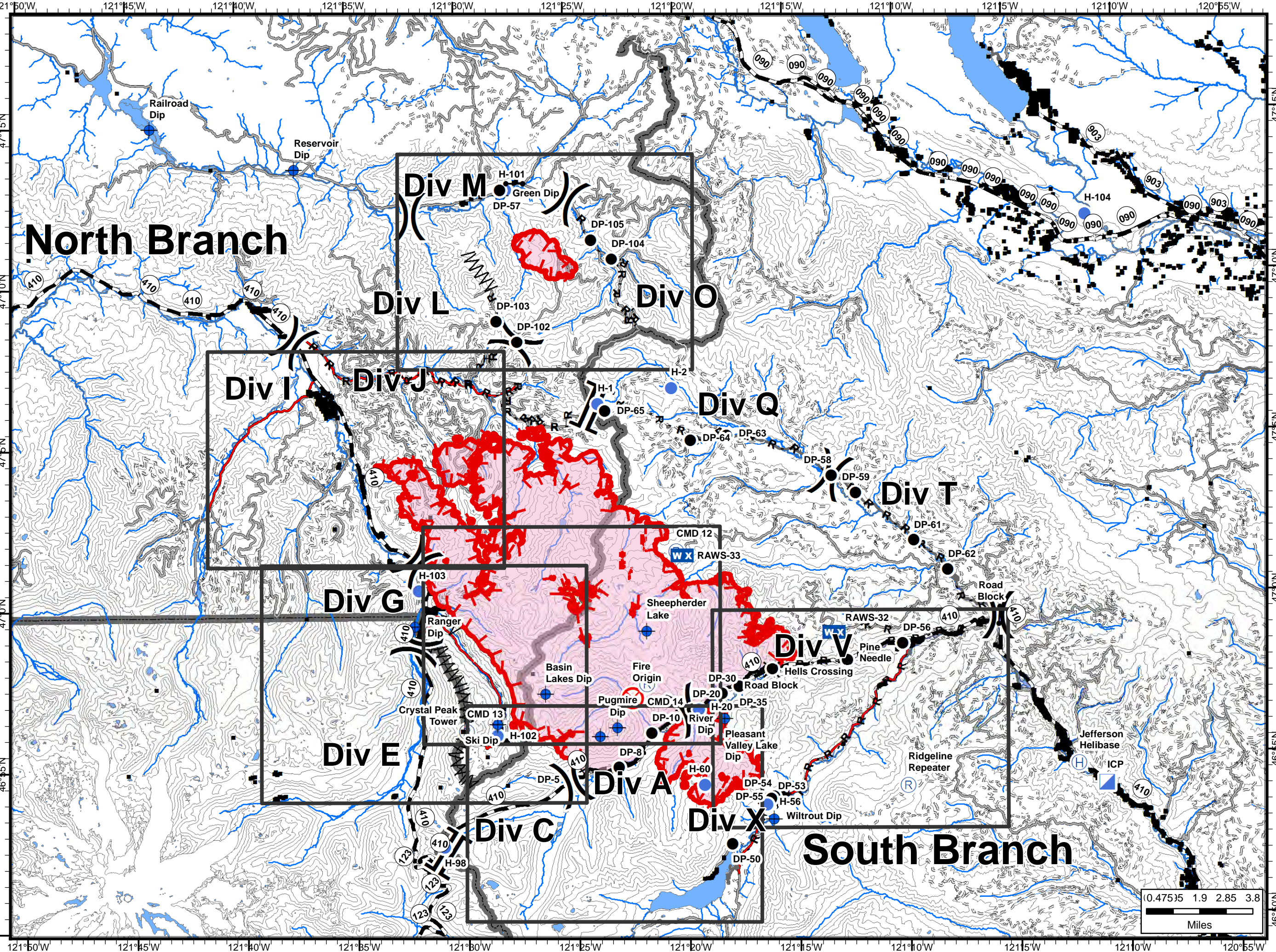
52,298 Ac. Norse Peak  
3,853 Ac. American  
1,083 Ac. Sawmill



NIFC  
Online Maps

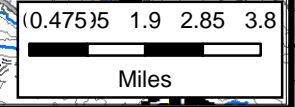
## Legend

- X Closure
- Dip Site
- Drop Point
- ⊗ Fire Origin
- Gate
- ⊕ Helibase
- Helispot
- ▣ Incident Command Post
- WX Mobile Weather Unit
- Ⓡ Repeater
- ▲ Value at Risk
- ) ( Division Break
- ] [ Branch Break
- Uncontrolled Fire Edge
- Completed Line
- H - H - Completed Hand Line
- R - R - Road as Completed Line
- 〰 Line Break Completed
- Fire Perimeter
- Structure
- Administrative Boundary



# North Branch

# South Branch





121°30'W

121°25'W

121°20'W

# Norse Peak

WA-OWF-000365

Page 1

IAP Map 9/19/2017

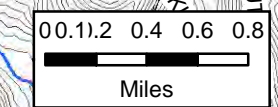
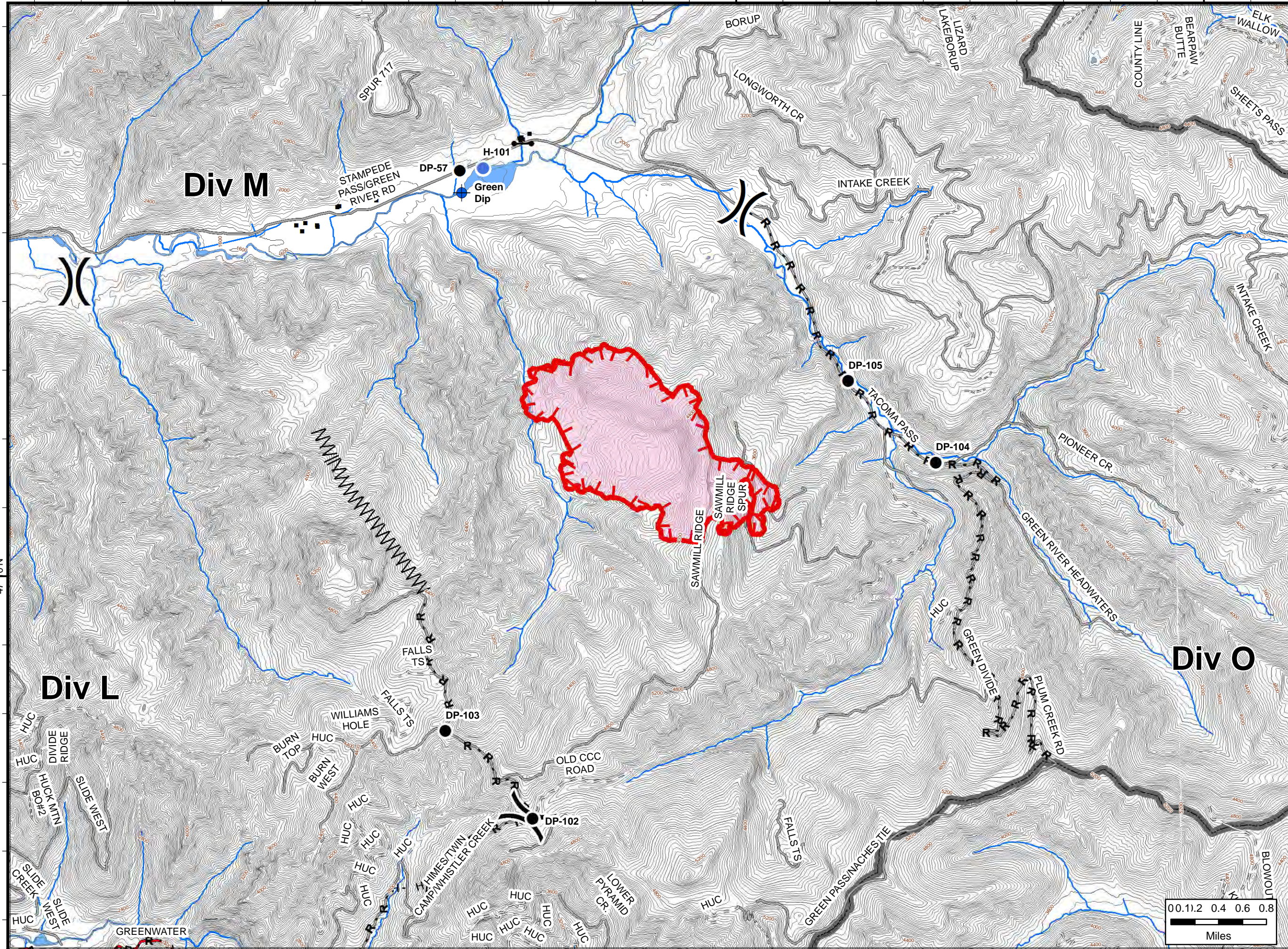
52,298 Ac. Norse Peak  
3,853 Ac. American  
1,083 Ac. Sawmill



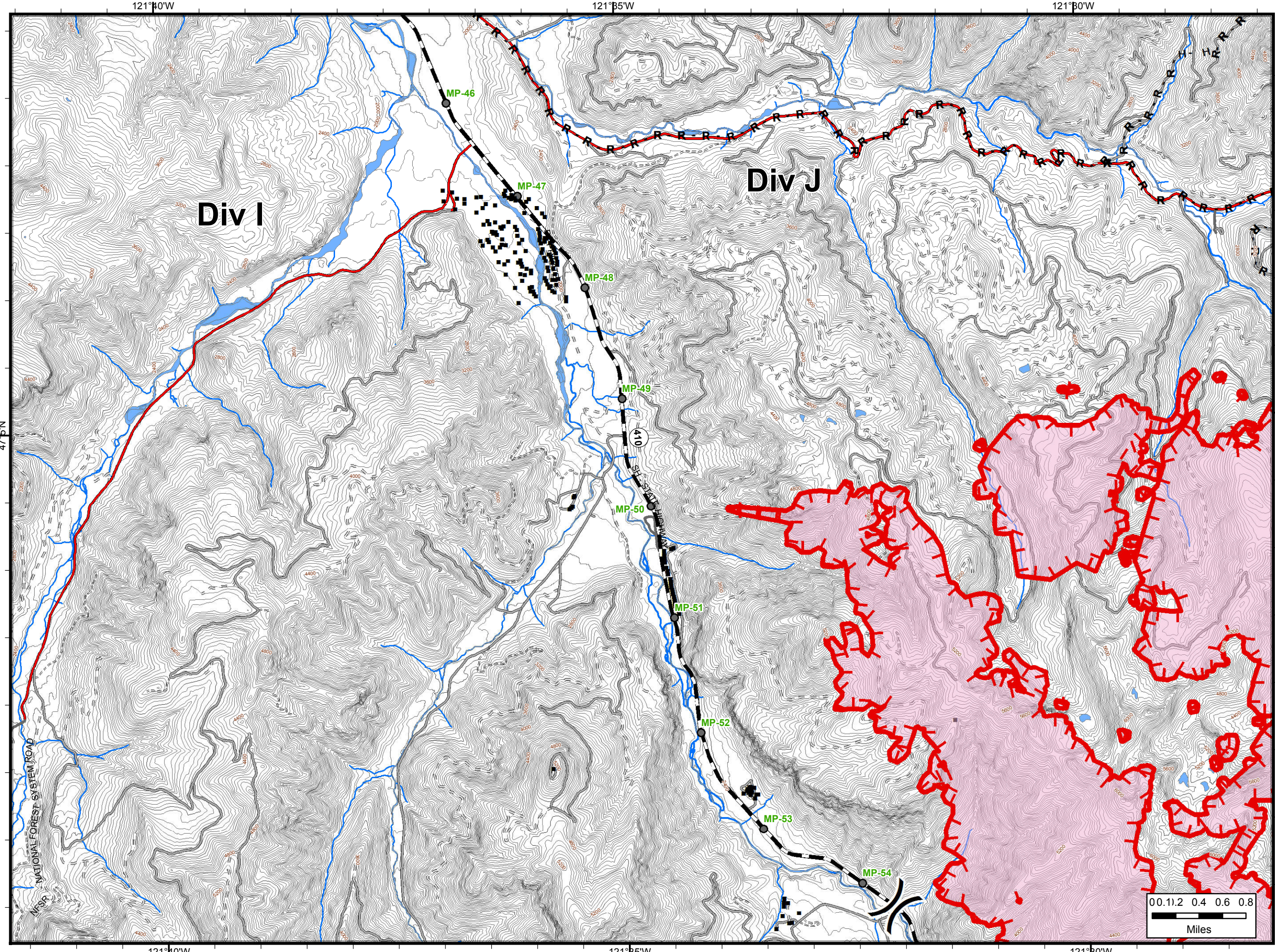
NIFC  
Online Maps

## Legend

- Dip Site
- Drop Point
- Gate
- Helispot
- Division Break
- Uncontrolled Fire Edge
- H - H - Completed Hand Line
- R - R - Road as Completed Line
- Line Break Completed
- Fire Perimeter
- Structure
- Administrative Boundary







# Norse Peak

WA-OWF-000365

Page 2

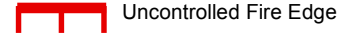
IAP Map 9/19/2017

52,298 Ac. Norse Peak  
3,853 Ac. American  
1,083 Ac. Sawmill



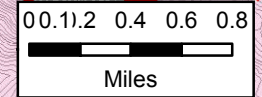
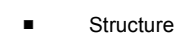
NIFC  
Online Maps

## Legend



H - H - Completed Hand Line

R - R - Road as Completed Line





121°30'W

121°25'W

121°20'W

# Norse Peak

WA-OWF-000365

Page 3











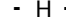





IAP Map 9/19/2017

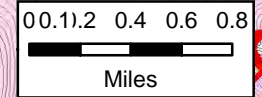
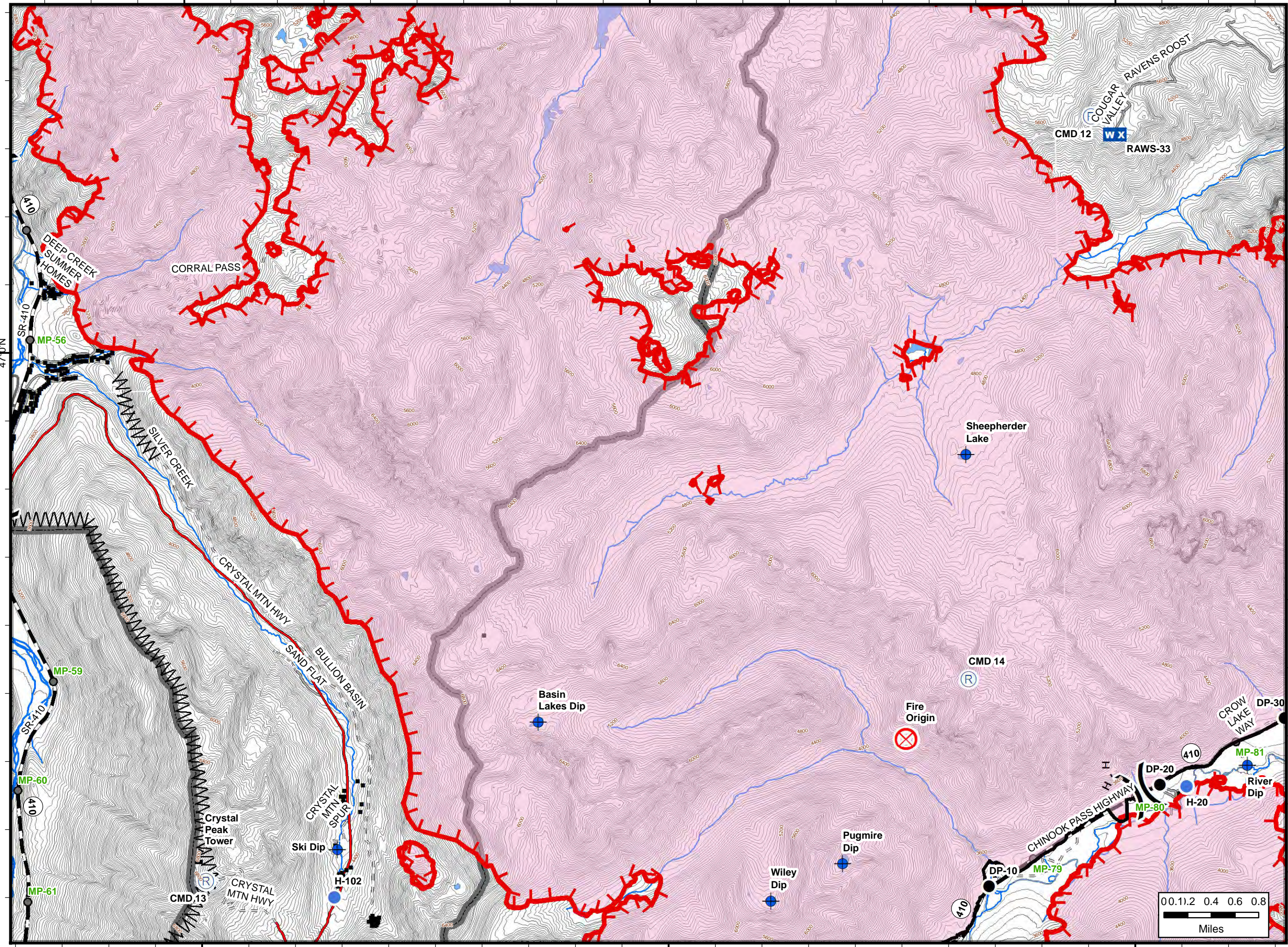
52,298 Ac. Norse Peak  
3,853 Ac. American  
1,083 Ac. Sawmill



NIFC  
Online Maps

## Legend

-  Dip Site
-  Drop Point
-  Fire Origin
-  Helispot
-  Mobile Weather Unit
-  Repeater
-  Value at Risk
-  Division Break
-  Uncontrolled Fire Edge
-  Completed Line
-  Completed Hand Line
-  Line Break Completed
-  Fire Perimeter
-  Structure
-  Mileposts
-  Administrative Boundary



121°30'W

121°25'W

121°20'W

47°N

47°N



# Norse Peak

WA-OWF-000365

Page 4

IAP Map 9/19/2017

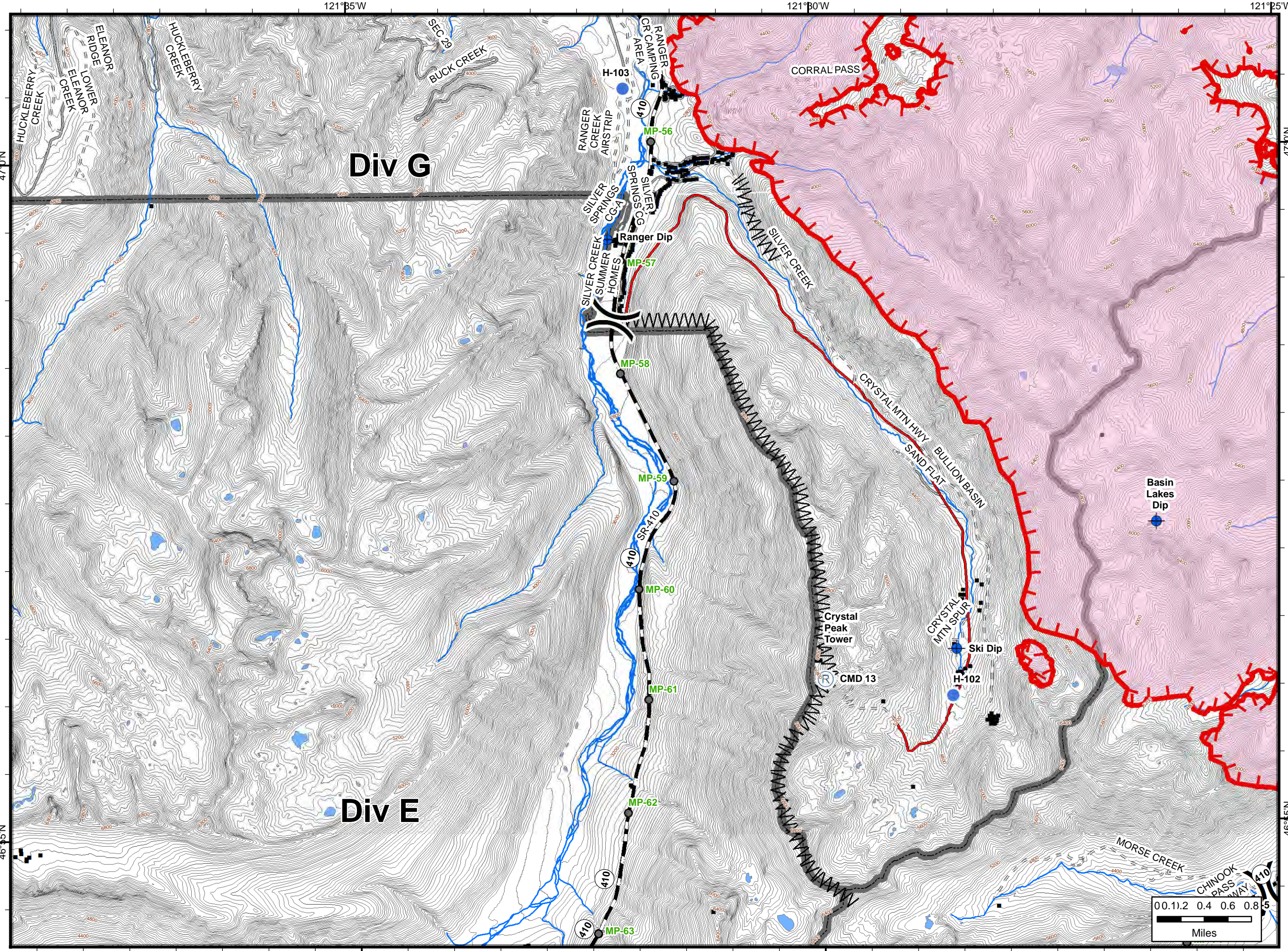
52,298 Ac. Norse Peak  
3,853 Ac. American  
1,083 Ac. Sawmill



NIFC  
Online Maps

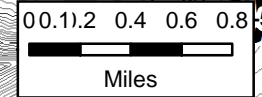
## Legend

- Dip Site
- Drop Point
- Helispot
- Repeater
- Value at Risk
- Division Break
- Uncontrolled Fire Edge
- Completed Line
- Completed Hand Line
- Line Break Completed
- Fire Perimeter
- Structure
- Mileposts
- Administrative Boundary



Div G

Div E





# Norse Peak

WA-OWF-000365

Page 5

IAP Map 9/19/2017

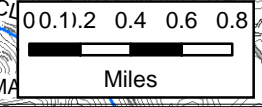
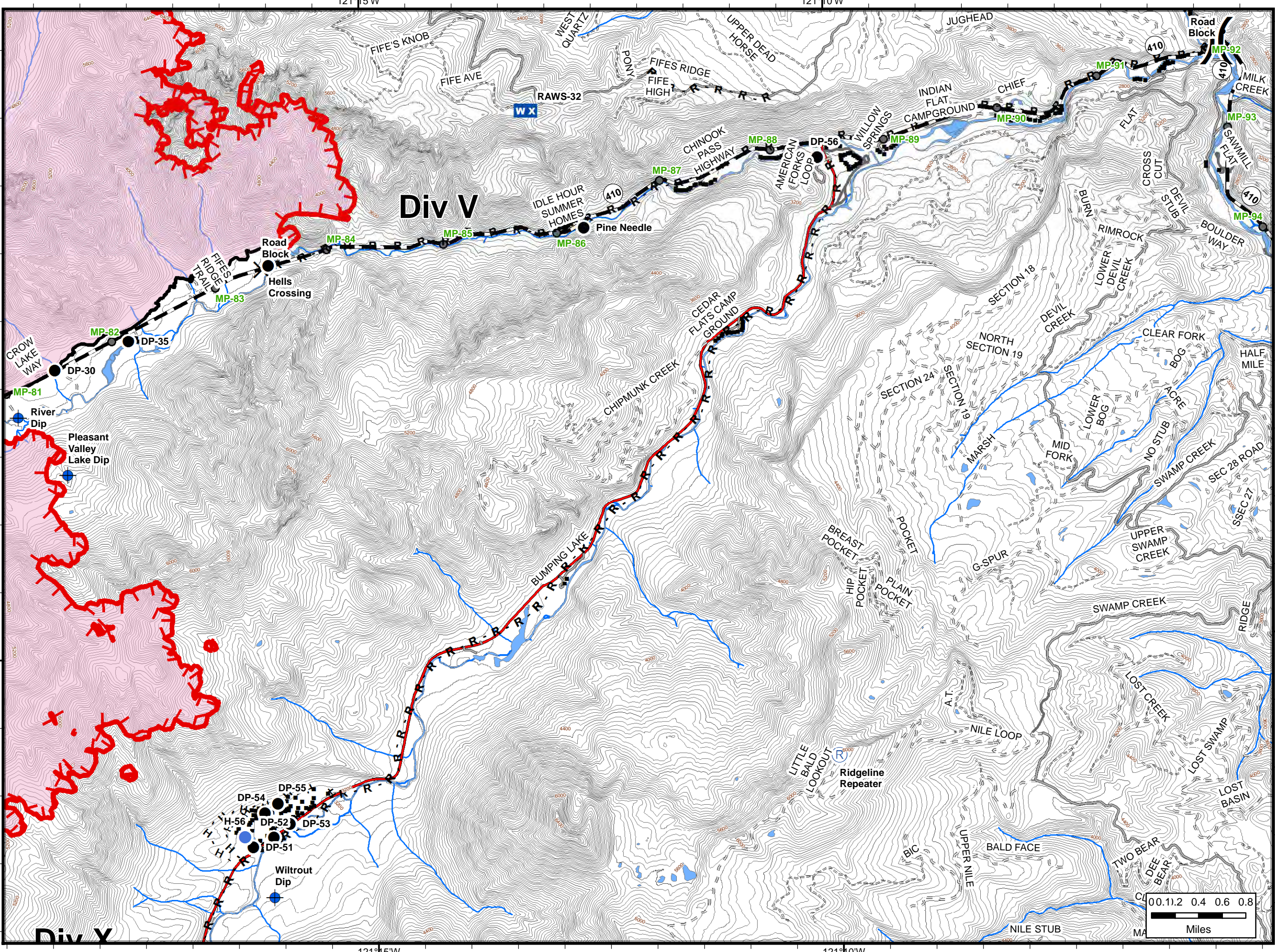
52,298 Ac. Norse Peak  
3,853 Ac. American  
1,083 Ac. Sawmill



NIFC  
Online Maps

## Legend

- X Closure
- ⊕ Dip Site
- Drop Point
- Gate
- Helispot
- WX Mobile Weather Unit
- Ⓡ Repeater
- ) ( Division Break
- ┌─┐ Uncontrolled Fire Edge
- Completed Line
- H - H - Completed Hand Line
- R - R - Road as Completed Line
- Fire Perimeter
- Structure
- Mileposts





# Norse Peak

WA-OWF-000365

Page 6

IAP Map 9/19/2017

52,298 Ac. Norse Peak  
3,853 Ac. American  
1,083 Ac. Sawmill



NIFC  
Online Maps

## Legend

- Dip Site
- Drop Point
- Helispot
- Repeater
- Division Break
- Uncontrolled Fire Edge
- Completed Line
- H - H - Completed Hand Line
- R - R - Road as Completed Line
- Line Break Completed
- Fire Perimeter
- Structure
- Mileposts
- Administrative Boundary

