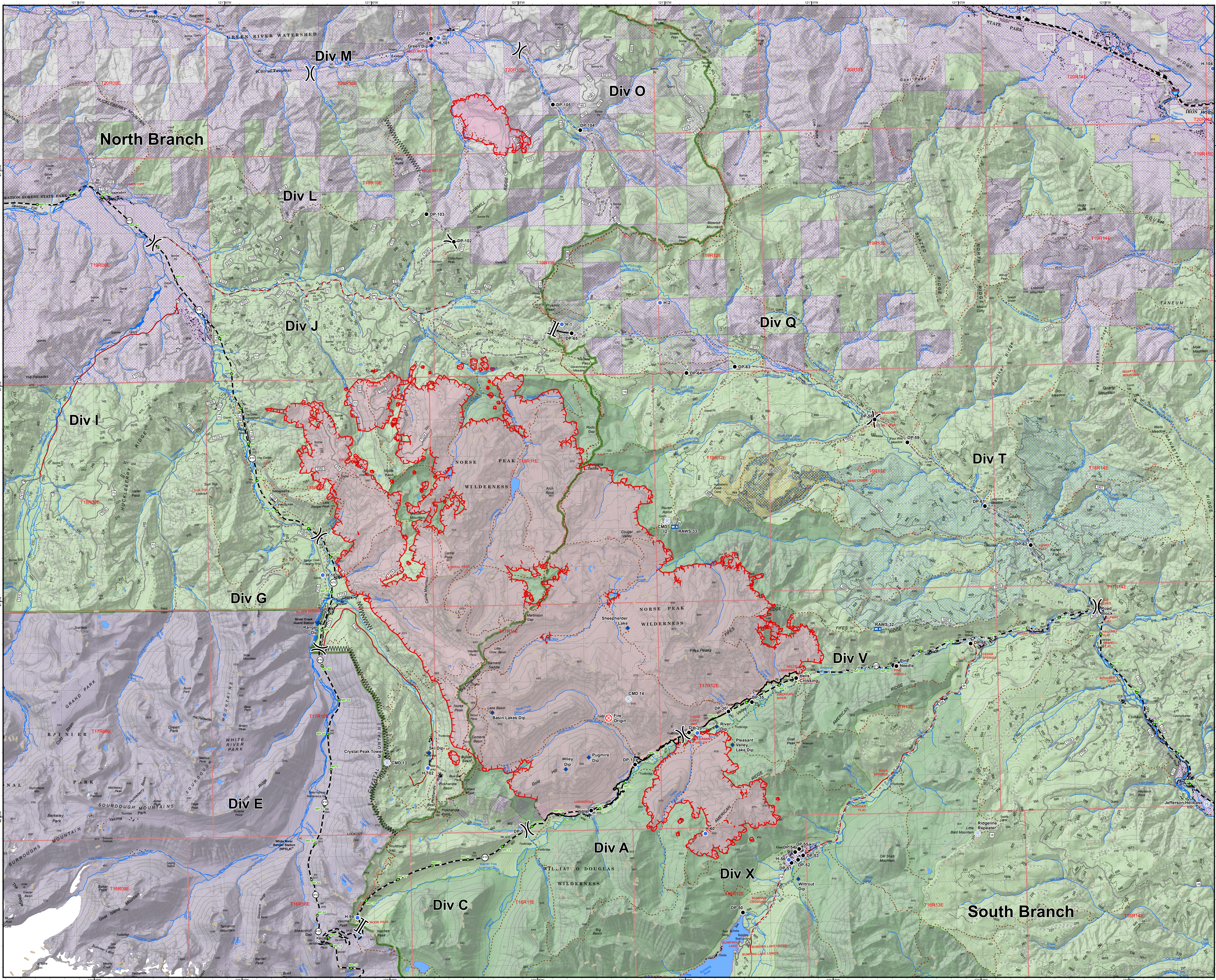


Norse Peak
WA-OWF-000365
Operations Map
9/19/2017

IR Perimeter 9/16/2017 @ 0213 hrs
 52,298 Ac. Norse Peak
 3853 Ac. American
 1083 Ac. Sawmill



- Uncontrolled Fire Edge
- Completed Hand Line
- Road as Completed Line
- Completed Line
- Line Break Completed
- Closure
- Dip Site
- Drop Point
- Fire Origin
- Gate
- Helibase
- Helispot
- Mobile Weather Unit
- Repeater
- Value at Risk
- Division Break
- Branch Break
- Structures
- Mileposts
- State Highway
- 5 - High Degree Of User Comfort
- 4 - Moderate Degree Of User Comfort
- 3 - Suitable For Passenger Cars
- 2 - High Clearance Vehicles
- 1 - CLOSED
- MSF/DWF Boundary
- United States Forest Service (USFS)
- Mount Rainier National Park
- Bureau of Land Management
- USFS - Wilderness
- FFFA/Private
- TS Planning Area Commercial
- Harvest Site
- Huckleberry Stewardship TS Units

