

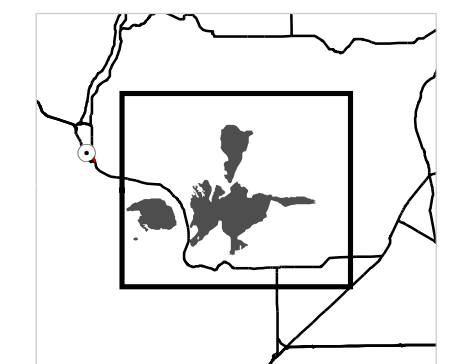
# Sutherland Canyon and Straight Hollow Fire

WA-SPD-000121  
WA-SPD-000126

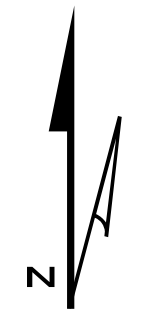
## Repair Plan Map

07/02/2017  
Day Shift  
Perimeter as of 07/01/2017 @ 2100

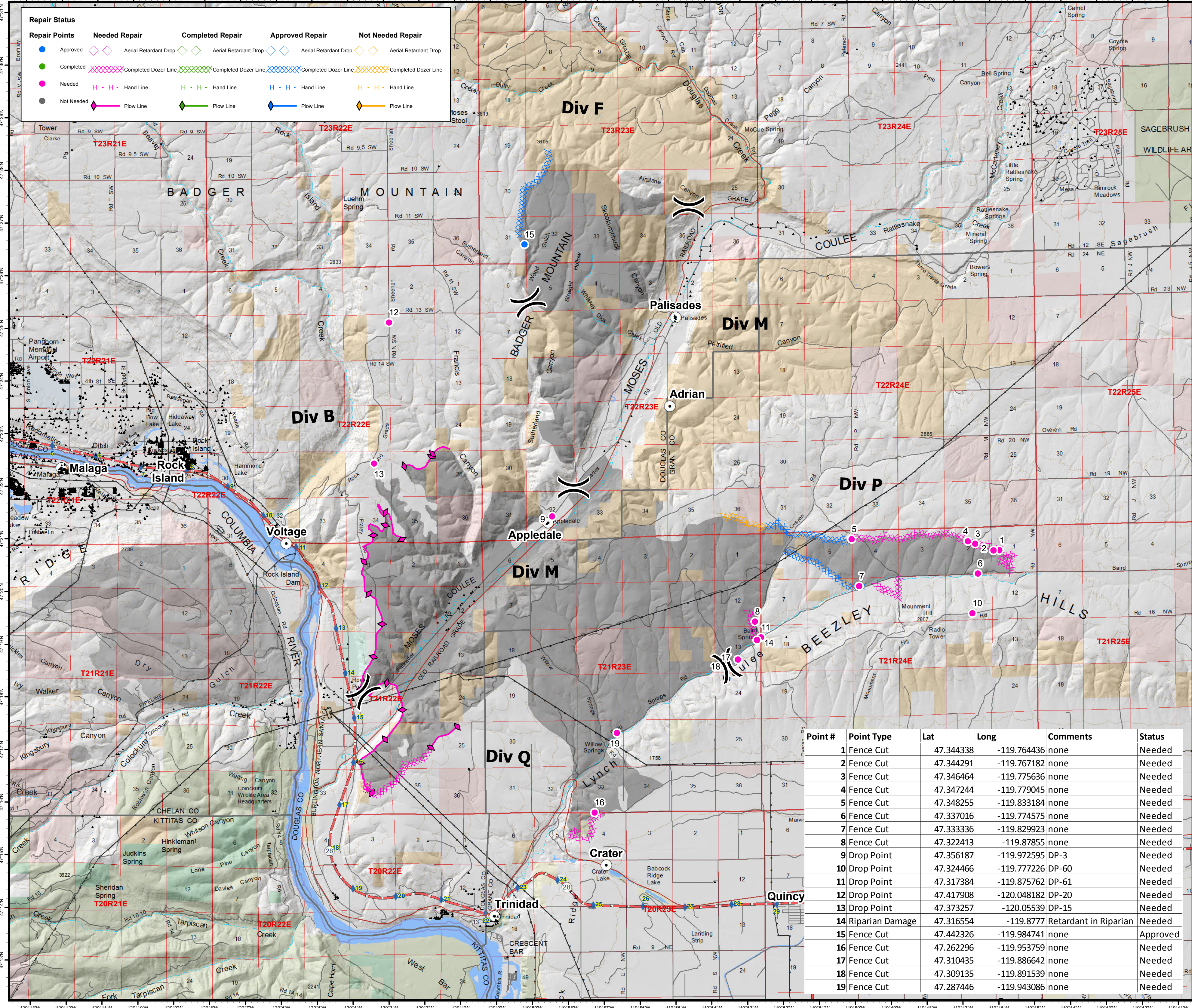
1  
Miles



Magnetic Declination: +15.33° E



NWIMT11



Repair Status				
Repair Points	Needed Repair	Completed Repair	Approved Repair	Not Needed Repair
Approved	Aerial Retardant Drop	Aerial Retardant Drop	Aerial Retardant Drop	Aerial Retardant Drop
Completed	Completed Dozer Line	Completed Dozer Line	Completed Dozer Line	Completed Dozer Line
Needed	Hand Line	Hand Line	Hand Line	Hand Line
Not Needed	Plow Line	Plow Line	Plow Line	Plow Line

Point #	Point Type	Lat	Long	Comments	Status
1	Fence Cut	47.344338	-119.764436	none	Needed
2	Fence Cut	47.344291	-119.767182	none	Needed
3	Fence Cut	47.346464	-119.775636	none	Needed
4	Fence Cut	47.347244	-119.779045	none	Needed
5	Fence Cut	47.348255	-119.833184	none	Needed
6	Fence Cut	47.337016	-119.774575	none	Needed
7	Fence Cut	47.333336	-119.829923	none	Needed
8	Fence Cut	47.322413	-119.87855	none	Needed
9	Drop Point	47.356187	-119.972595	DP-3	Needed
10	Drop Point	47.324466	-119.777226	DP-60	Needed
11	Drop Point	47.317384	-119.875762	DP-61	Needed
12	Drop Point	47.417908	-120.048182	DP-20	Needed
13	Drop Point	47.373257	-120.05539	DP-15	Needed
14	Riparian Damage	47.316554	-119.8777	Retardant in Riparian	Needed
15	Fence Cut	47.442326	-119.984741	none	Approved
16	Fence Cut	47.262296	-119.953759	none	Needed
17	Fence Cut	47.310435	-119.886642	none	Needed
18	Fence Cut	47.309135	-119.891539	none	Needed
19	Fence Cut	47.287446	-119.943086	none	Needed

- Division
- Structures
- Town & City Locations
- Transmission Line
- Railroads
- Milepost Markers (DOT)
- Highway
- Roads (DNR)
- DNR Lands
- City or Municipality
- County
- Other
- State University
- US Bureau of Land Management
- US Bureau of Reclamation
- US Fish and Wildlife Service
- WA Dept of Fish and Wildlife