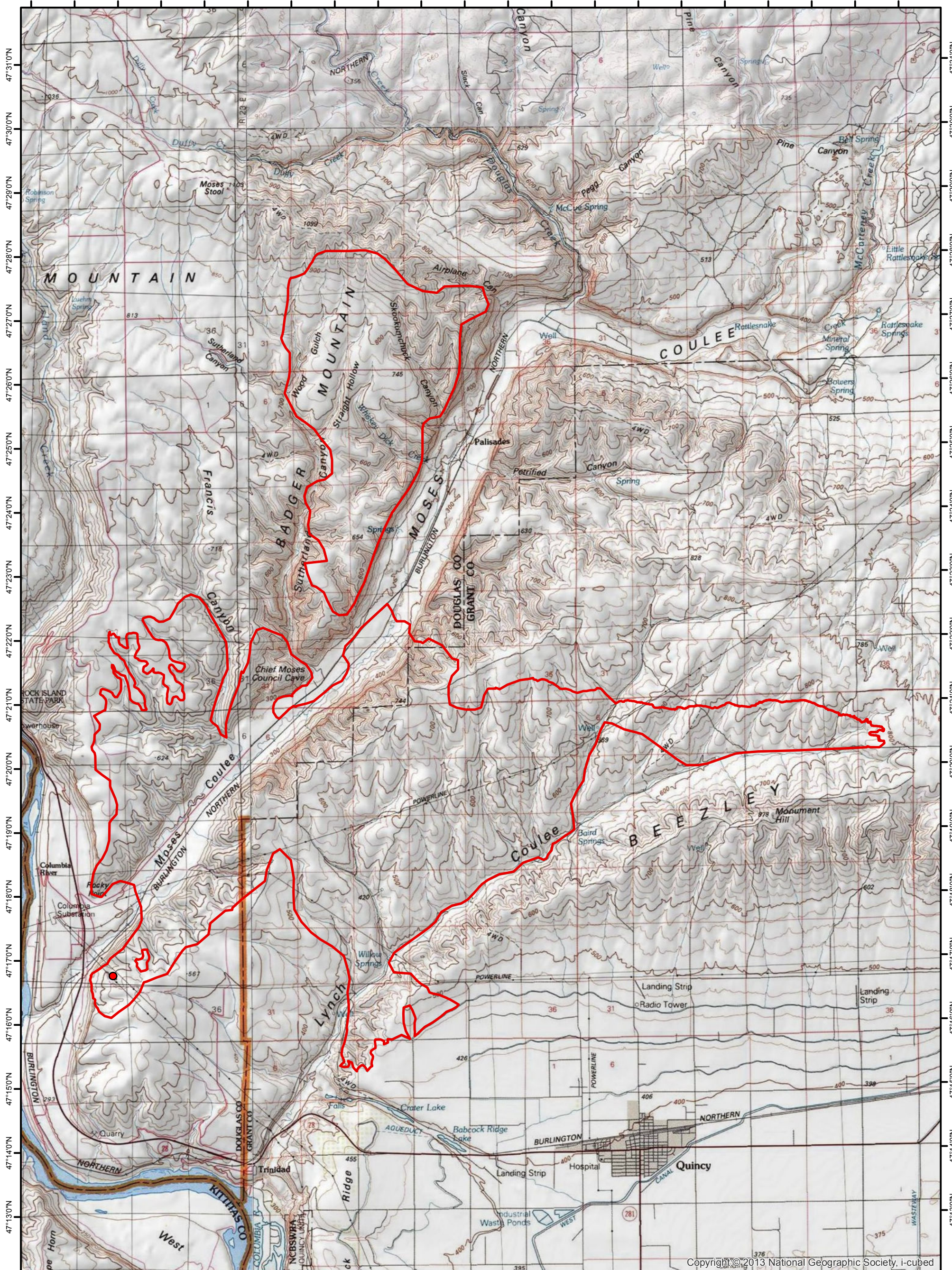


120°5'0"W 120°4'0"W 120°3'0"W 120°2'0"W 120°1'0"W 120°0'0"W 119°59'0"W 119°58'0"W 119°57'0"W 119°56'0"W 119°55'0"W 119°54'0"W 119°53'0"W 119°52'0"W 119°51'0"W 119°50'0"W 119°49'0"W 119°48'0"W 119°47'0"W 119°46'0"W 119°45'0"W



Copyright © 2013 National Geographic Society, i-cubed

120°5'0"W 120°4'0"W 120°3'0"W 120°2'0"W 120°1'0"W 120°0'0"W 119°59'0"W 119°58'0"W 119°57'0"W 119°56'0"W 119°55'0"W 119°54'0"W 119°53'0"W 119°52'0"W 119°51'0"W 119°50'0"W 119°49'0"W 119°48'0"W 119°47'0"W 119°46'0"W 119°45'0"W



**INFRARED MAP**  
 Sutherland Canyon Fire (WA-SPD-000121)  
 Flight: July 02, 2017 @ 0049 PDT  
 37,694 IR Acres  
 IRIN: Dale Gough



**Legend**

- Heat Perimeter
- Isolated Heat Source

