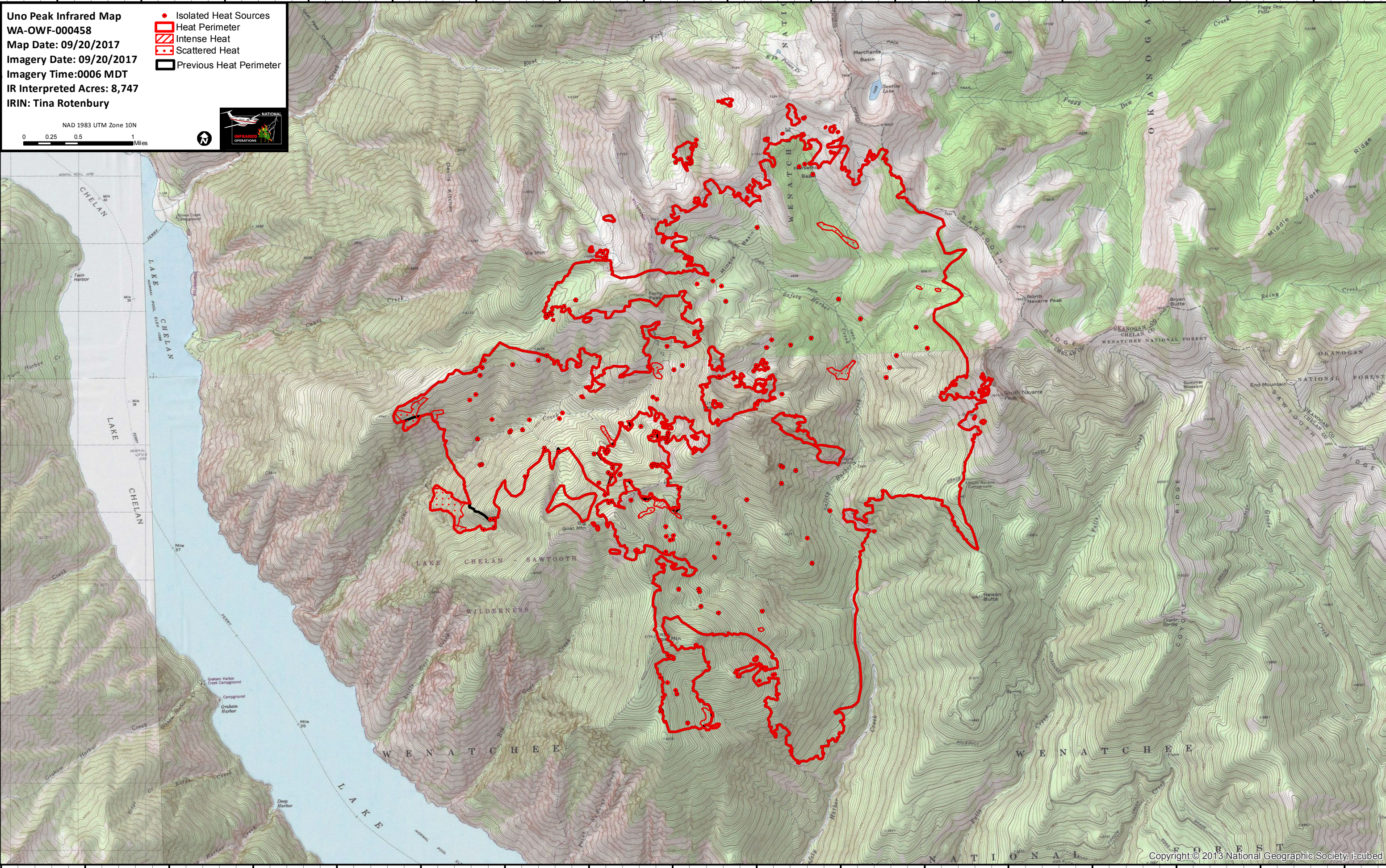


120°31'W 120°30'W 120°29'W 120°28'W 120°27'W 120°26'W 120°25'W 120°24'W 120°23'W 120°22'W 120°21'W 120°20'W 120°19'W 120°18'W 120°17'W 120°16'W

**Uno Peak Infrared Map**  
WA-OWF-000458  
Map Date: 09/20/2017  
Imagery Date: 09/20/2017  
Imagery Time: 0006 MDT  
IR Interpreted Acres: 8,747  
IRIN: Tina Rotenbury

- Isolated Heat Sources
- Heat Perimeter
- Intense Heat
- Scattered Heat
- Previous Heat Perimeter

NAD 1983 UTM Zone 10N  
0 0.25 0.5 1 Miles



120°32'W 120°31'W 120°30'W 120°29'W 120°28'W 120°27'W 120°26'W 120°25'W 120°24'W 120°23'W 120°22'W 120°21'W 120°20'W 120°19'W 120°18'W 120°17'W 120°16'W

48°10'N  
48°9'N  
48°8'N  
48°7'N  
48°6'N  
48°5'N  
48°4'N

48°10'N  
48°9'N  
48°8'N  
48°7'N  
48°6'N  
48°5'N  
48°4'N