


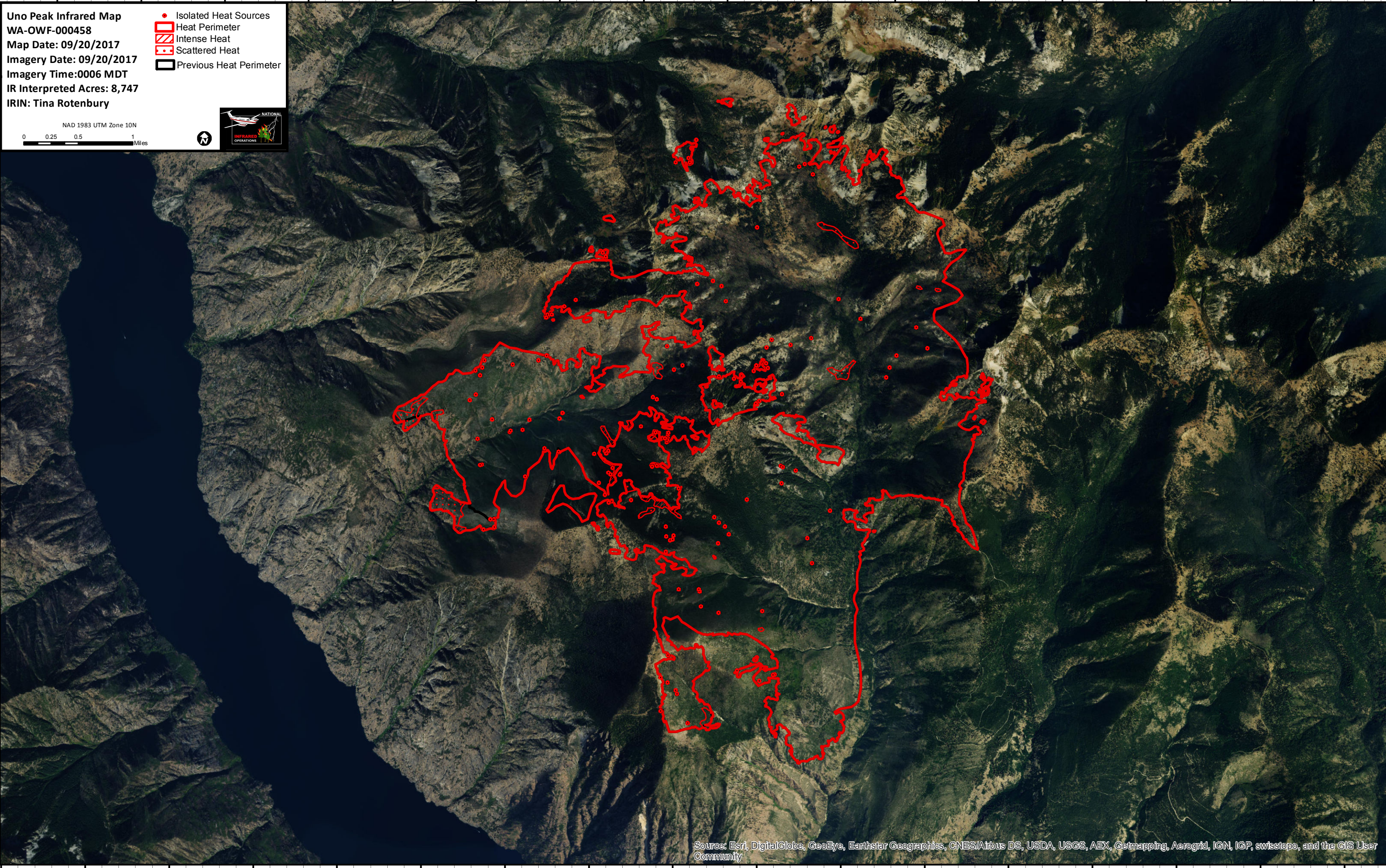
120°31'W 120°30'W 120°29'W 120°28'W 120°27'W 120°26'W 120°25'W 120°24'W 120°23'W 120°22'W 120°21'W 120°20'W 120°19'W 120°18'W 120°17'W 120°16'W

**Uno Peak Infrared Map**  
**WA-OWF-000458**  
**Map Date: 09/20/2017**  
**Imagery Date: 09/20/2017**  
**Imagery Time: 0006 MDT**  
**IR Interpreted Acres: 8,747**  
**IRIN: Tina Rotenbury**

- Isolated Heat Sources
- Heat Perimeter
- Intense Heat
- Scattered Heat
- Previous Heat Perimeter

NAD 1983 UTM Zone 10N

0 0.25 0.5 1 Miles

120°32'W 120°31'W 120°30'W 120°29'W 120°28'W 120°27'W 120°26'W 120°25'W 120°24'W 120°23'W 120°22'W 120°21'W 120°20'W 120°19'W 120°18'W 120°17'W 120°16'W

Source: Esri, DigitalGlobe, GeoEye, Earthstar Geographics, CNES/Airbus DS, USDA, USGS, AEX, Getmapping, Aerogrid, IGN, IGP, swisstopo, and the GIS User Community