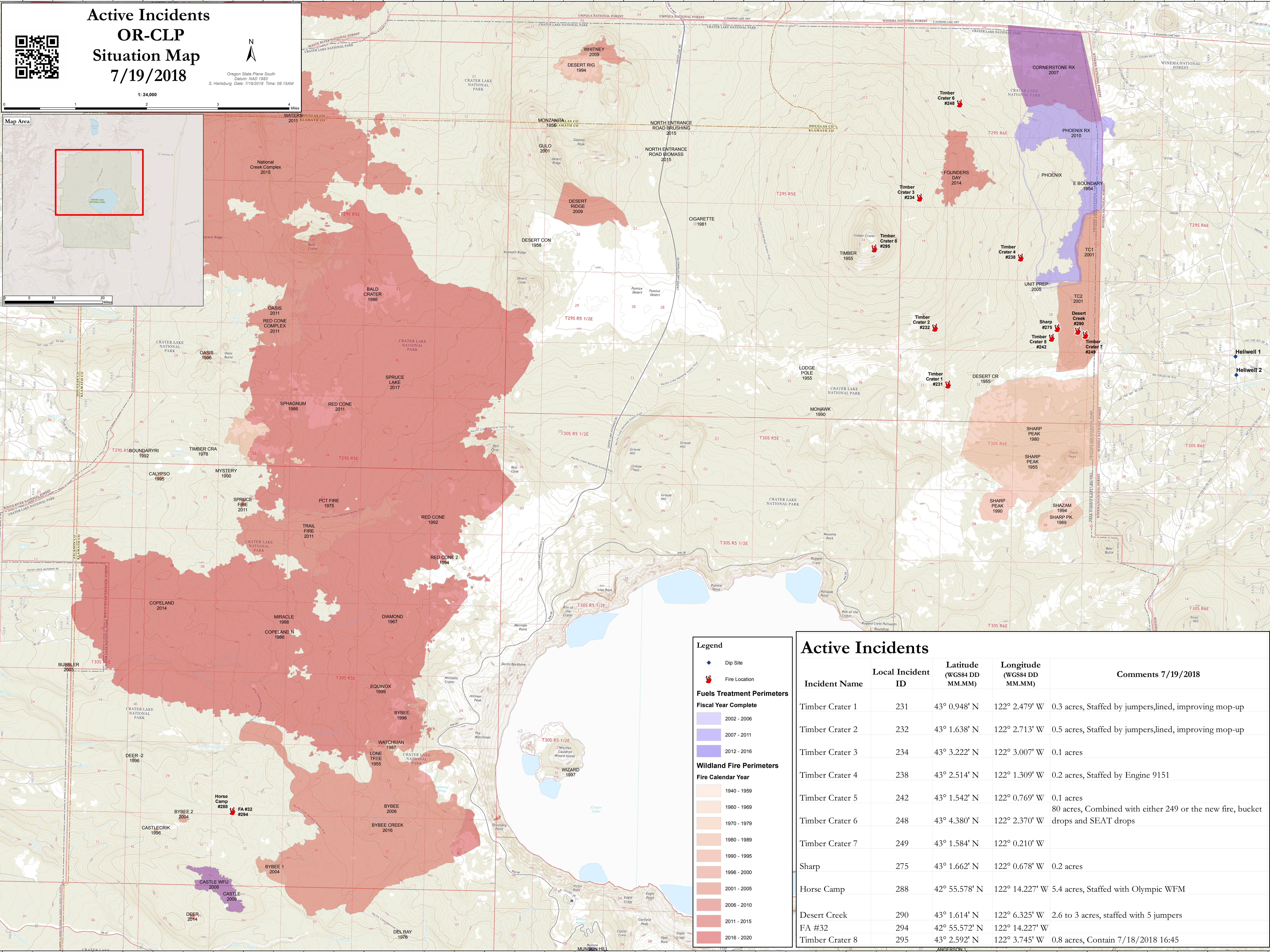
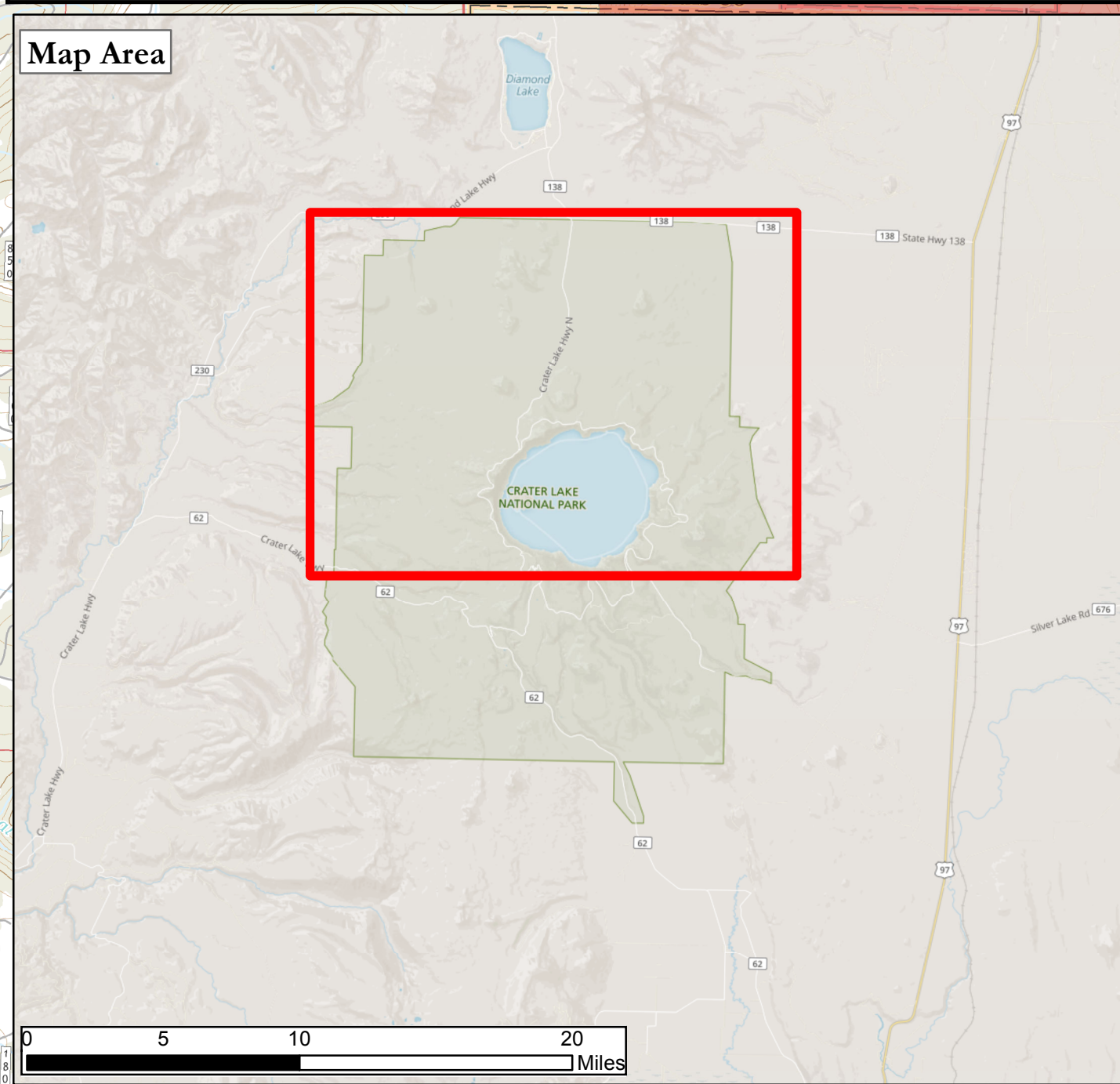


Active Incidents OR-CLP Situation Map 7/19/2018



Oregon State Plane South
Datum: NAD 1983
S. Hartsburg Date: 7/19/2018 Time: 06:15AM

1:24,000



Legend

- Dip Site
- Fire Location
- Fuels Treatment Perimeters**
- Fiscal Year Complete**
- 2002 - 2006
- 2007 - 2011
- 2012 - 2016
- Wildland Fire Perimeters**
- Fire Calendar Year**
- 1940 - 1959
- 1960 - 1969
- 1970 - 1979
- 1980 - 1989
- 1990 - 1995
- 1996 - 2000
- 2001 - 2005
- 2006 - 2010
- 2011 - 2015
- 2016 - 2020

Active Incidents

Incident Name	Local Incident ID	Latitude (WGS84 DD MM.MM)	Longitude (WGS84 DD MM.MM)	Comments 7/19/2018
Timber Crater 1	231	43° 0.948' N	122° 2.479' W	0.3 acres, Staffed by jumpers,lined, improving mop-up
Timber Crater 2	232	43° 1.638' N	122° 2.713' W	0.5 acres, Staffed by jumpers,lined, improving mop-up
Timber Crater 3	234	43° 3.222' N	122° 3.007' W	0.1 acres
Timber Crater 4	238	43° 2.514' N	122° 1.309' W	0.2 acres, Staffed by Engine 9151
Timber Crater 5	242	43° 1.542' N	122° 0.769' W	0.1 acres
Timber Crater 6	248	43° 4.380' N	122° 2.370' W	80 acres, Combined with either 249 or the new fire, bucket drops and SEAT drops
Timber Crater 7	249	43° 1.584' N	122° 0.210' W	
Sharp	275	43° 1.662' N	122° 0.678' W	0.2 acres
Horse Camp	288	42° 55.578' N	122° 14.227' W	5.4 acres, Staffed with Olympic WFM
Desert Creek	290	43° 1.614' N	122° 6.325' W	2.6 to 3 acres, staffed with 5 jumpers
FA #32	294	42° 55.572' N	122° 14.227' W	
Timber Crater 8	295	43° 2.592' N	122° 3.745' W	0.8 acres, Contain 7/18/2018 16:45