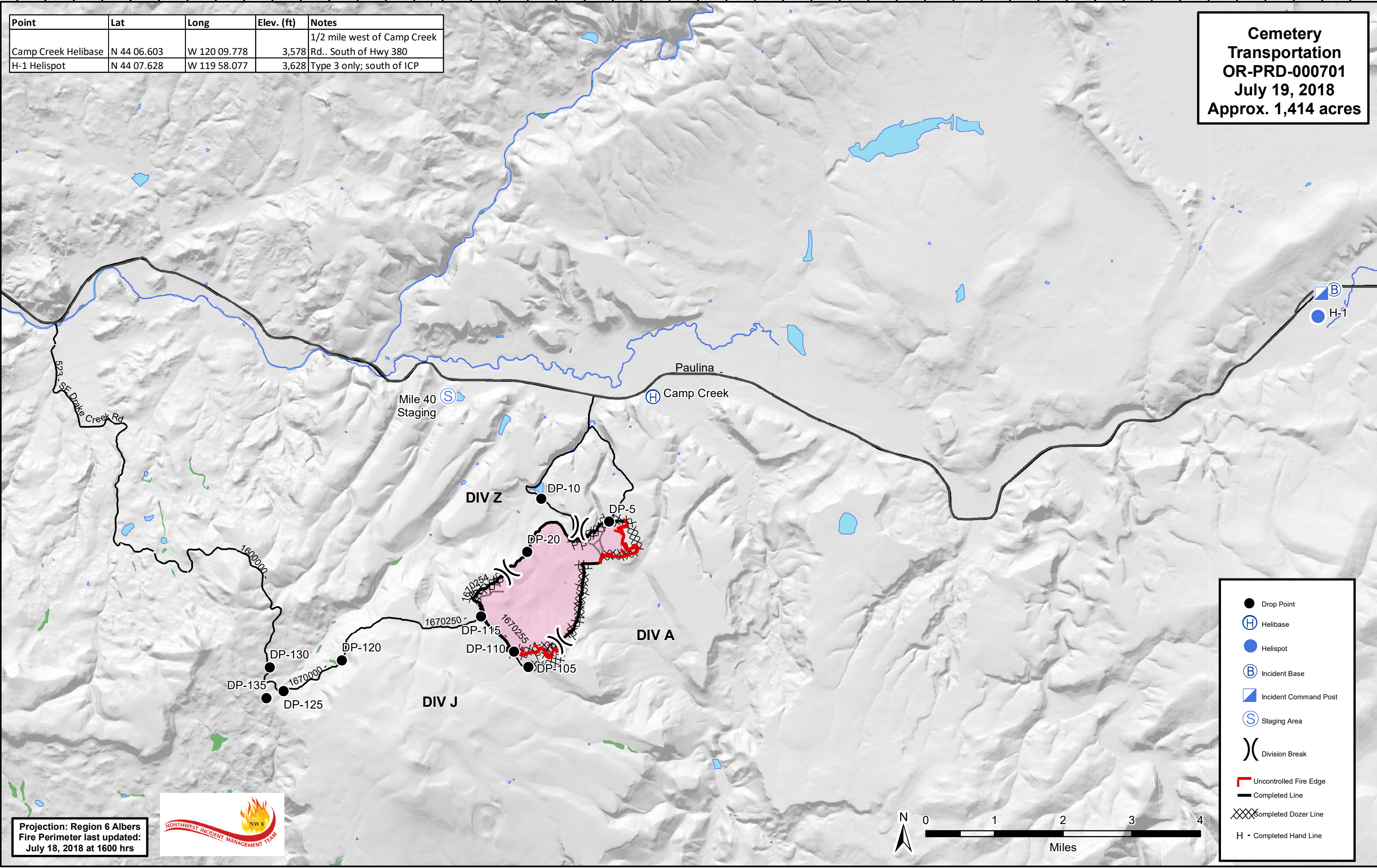


120°20'30"W 120°19'30"W 120°18'30"W 120°17'30"W 120°16'30"W 120°15'30"W 120°14'30"W 120°13'30"W 120°12'30"W 120°11'30"W 120°10'30"W 120°9'30"W 120°8'30"W 120°7'30"W 120°6'30"W 120°5'30"W 120°4'30"W 120°3'30"W 120°2'30"W 120°1'30"W 120°0'30"W 119°59'30"W 119°58'30"W 119°57'30"W

Point	Lat	Long	Elev. (ft)	Notes
Camp Creek Helibase	N 44 06.603	W 120 09.778	3,578	1/2 mile west of Camp Creek Rd., South of Hwy 380
H-1 Helispot	N 44 07.628	W 119 58.077	3,628	Type 3 only; south of ICP

**Cemetery
Transportation
OR-PRD-000701
July 19, 2018
Approx. 1,414 acres**



Projection: Region 6 Albers
Fire Perimeter last updated:
July 18, 2018 at 1600 hrs



- Drop Point
- Ⓜ Helibase
- Helispot
- Ⓟ Incident Base
- Ⓜ Incident Command Post
- Ⓢ Staging Area
- ⎓ Division Break
- Uncontrolled Fire Edge
- Completed Line
- ⊗ Completed Dozer Line
- H - Completed Hand Line

44°11'30"N 44°11'00"N 44°10'30"N 44°10'00"N 44°9'30"N 44°9'00"N 44°8'30"N 44°8'00"N 44°7'30"N 44°7'00"N 44°6'30"N 44°6'00"N 44°5'30"N 44°5'00"N 44°4'30"N 44°4'00"N 44°3'30"N 44°3'00"N 44°2'30"N 44°2'00"N 44°1'30"N 44°1'00"N