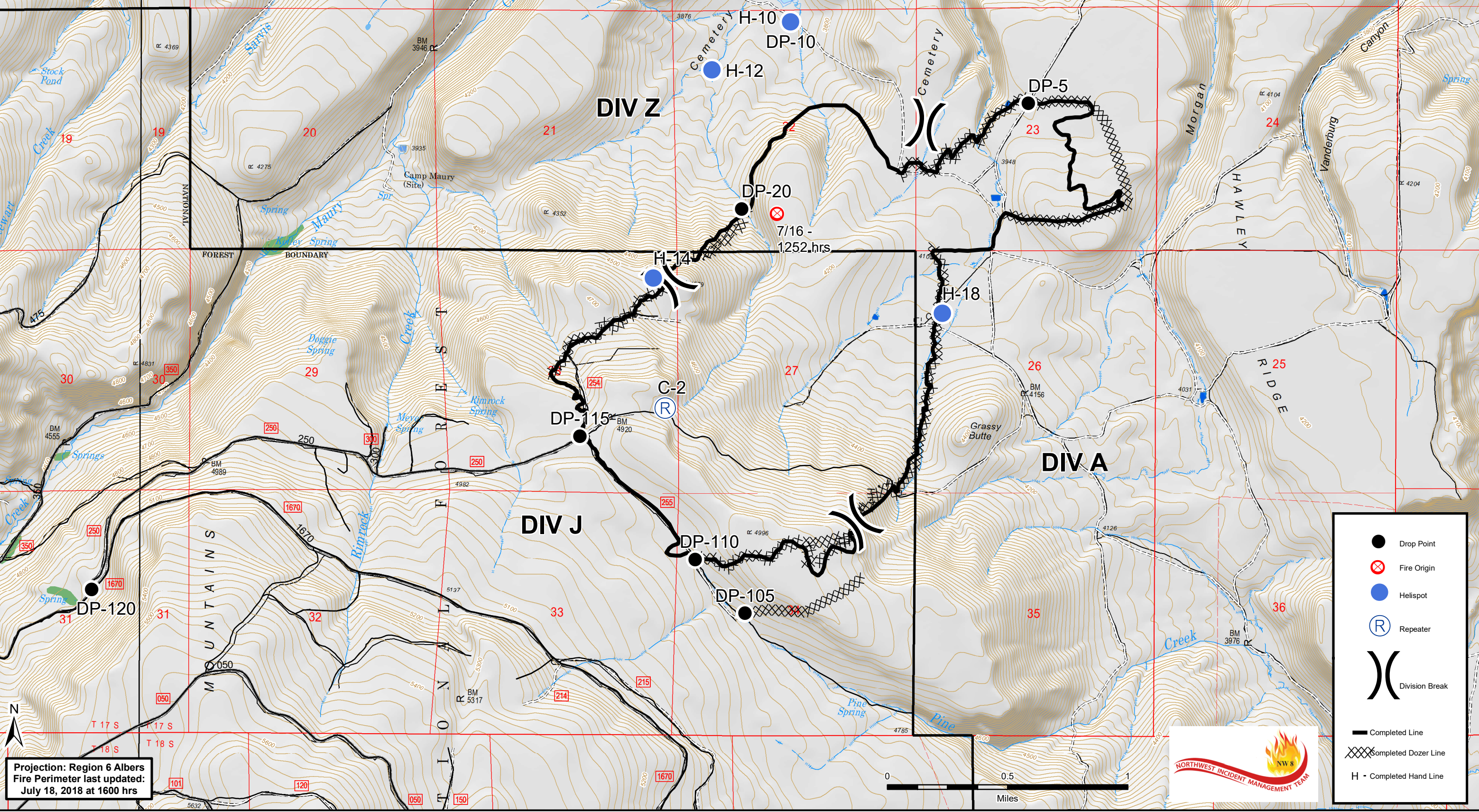


120°15'30"W 120°15'0"W 120°14'30"W 120°14'0"W 120°13'30"W 120°13'0"W 120°12'30"W 120°12'0"W 120°11'30"W 120°11'0"W 120°10'30"W 120°10'0"W 120°9'30"W 120°9'0"W 120°8'30"W

**Cemetery IAP**  
**OR-PRD-000701**  
**July 20, 2018**  
**Approx. 1,414 acres**



44°53'0"N  
44°50'0"N  
44°43'0"N  
44°40'0"N  
44°33'0"N  
44°30'0"N

Projection: Region 6 Albers  
 Fire Perimeter last updated:  
 July 18, 2018 at 1600 hrs

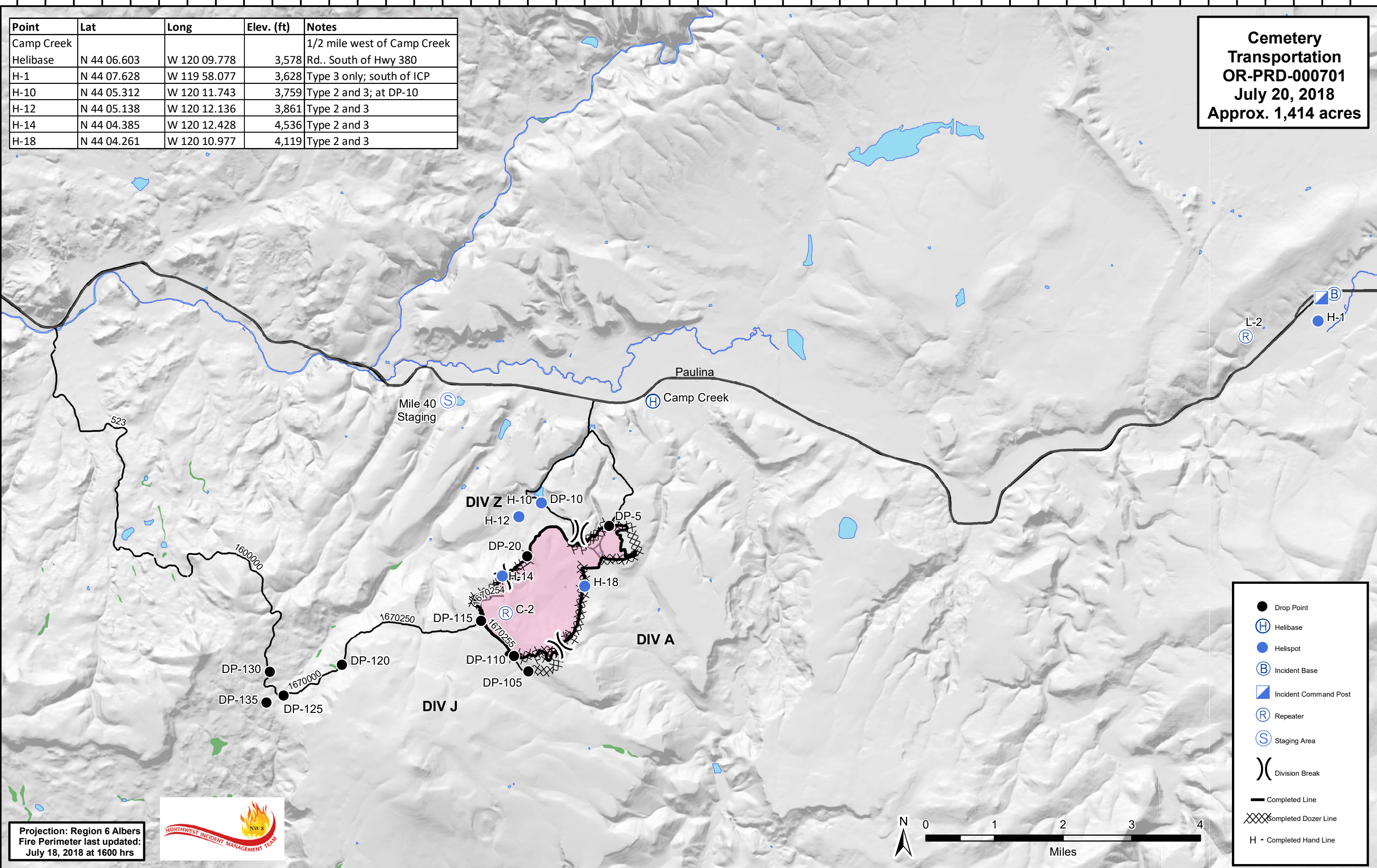


- Drop Point
- Fire Origin
- Helispot
- Repeater
- Division Break
- Completed Line
- Completed Dozer Line
- Completed Hand Line

120°20'30"W 120°19'30"W 120°18'30"W 120°17'30"W 120°16'30"W 120°15'30"W 120°14'30"W 120°13'30"W 120°12'30"W 120°11'30"W 120°10'30"W 120°9'30"W 120°8'30"W 120°7'30"W 120°6'30"W 120°5'30"W 120°4'30"W 120°3'30"W 120°2'30"W 120°1'30"W 120°0'30"W 119°59'30"W 119°58'30"W 119°57'30"W

Point	Lat	Long	Elev. (ft)	Notes
Camp Creek Helibase	N 44 06.603	W 120 09.778	3,578	1/2 mile west of Camp Creek Rd.. South of Hwy 380
H-1	N 44 07.628	W 119 58.077	3,628	Type 3 only; south of ICP
H-10	N 44 05.312	W 120 11.743	3,759	Type 2 and 3; at DP-10
H-12	N 44 05.138	W 120 12.136	3,861	Type 2 and 3
H-14	N 44 04.385	W 120 12.428	4,536	Type 2 and 3
H-18	N 44 04.261	W 120 10.977	4,119	Type 2 and 3

**Cemetery Transportation**  
**OR-PRD-000701**  
**July 20, 2018**  
**Approx. 1,414 acres**



Projection: Region 6 Albers  
 Fire Perimeter last updated:  
 July 18, 2018 at 1600 hrs



- Drop Point
- Ⓜ Helibase
- Helispot
- Ⓛ Incident Base
- Ⓜ Incident Command Post
- Ⓜ Repeater
- Ⓜ Staging Area
- Ⓜ Division Break
- Completed Line
- Ⓜ Completed Dozer Line
- H - Completed Hand Line



44°11'30"N 44°11'00"N 44°10'30"N 44°10'00"N 44°9'30"N 44°9'00"N 44°8'30"N 44°8'00"N 44°7'30"N 44°7'00"N 44°6'30"N 44°6'00"N 44°5'30"N 44°5'00"N 44°4'30"N 44°4'00"N 44°3'30"N 44°3'00"N 44°2'30"N 44°2'00"N 44°1'30"N 44°1'00"N