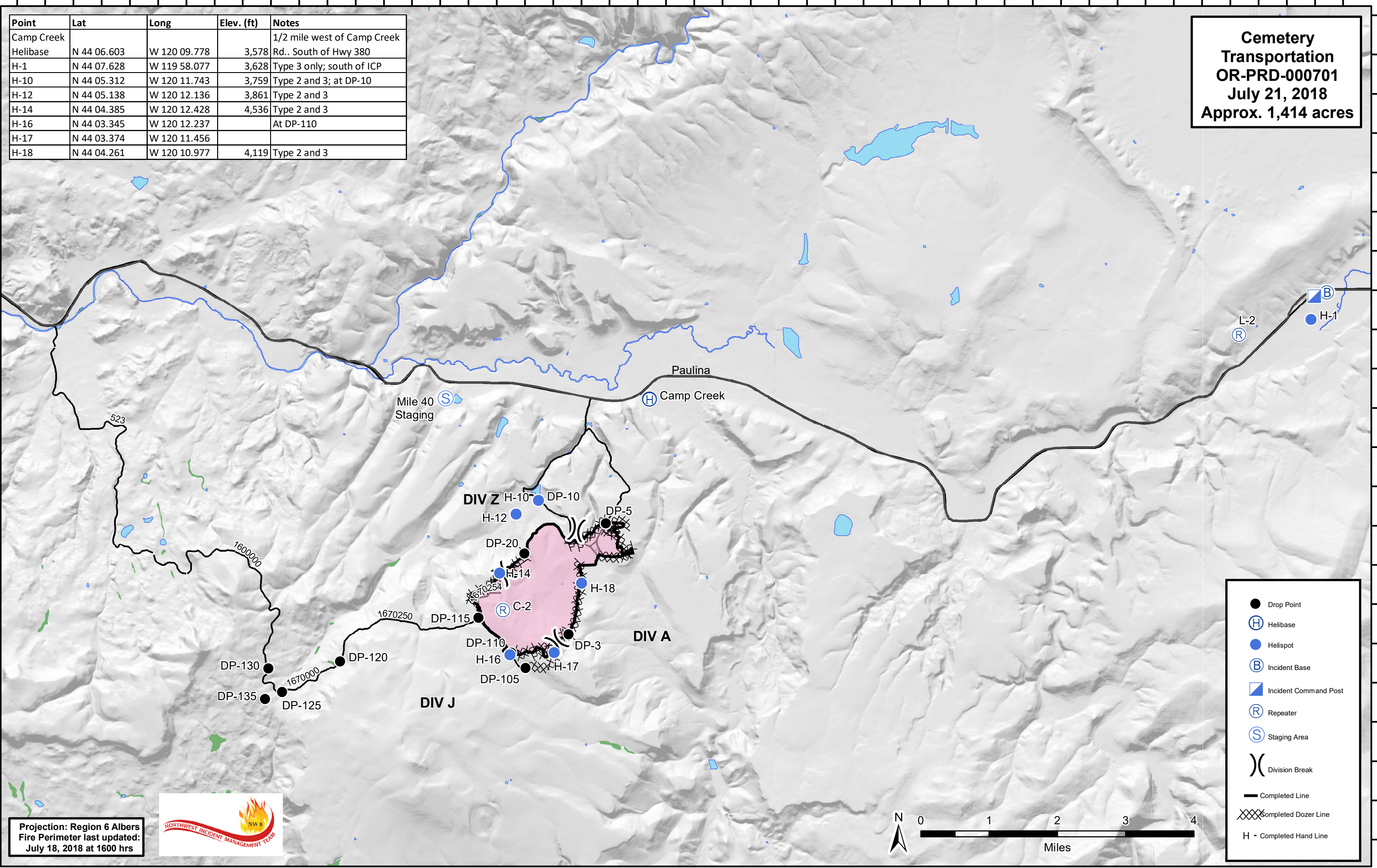


120°20'30"W 120°19'30"W 120°18'30"W 120°17'30"W 120°16'30"W 120°15'30"W 120°14'30"W 120°13'30"W 120°12'30"W 120°11'30"W 120°10'30"W 120°9'30"W 120°8'30"W 120°7'30"W 120°6'30"W 120°5'30"W 120°4'30"W 120°3'30"W 120°2'30"W 120°1'30"W 120°0'30"W 119°59'30"W 119°58'30"W 119°57'30"W

Point	Lat	Long	Elev. (ft)	Notes
Camp Creek				1/2 mile west of Camp Creek
Helibase	N 44 06.603	W 120 09.778	3,578	Rd.. South of Hwy 380
H-1	N 44 07.628	W 119 58.077	3,628	Type 3 only; south of ICP
H-10	N 44 05.312	W 120 11.743	3,759	Type 2 and 3; at DP-10
H-12	N 44 05.138	W 120 12.136	3,861	Type 2 and 3
H-14	N 44 04.385	W 120 12.428	4,536	Type 2 and 3
H-16	N 44 03.345	W 120 12.237		At DP-110
H-17	N 44 03.374	W 120 11.456		
H-18	N 44 04.261	W 120 10.977	4,119	Type 2 and 3

**Cemetery  
Transportation  
OR-PRD-000701  
July 21, 2018  
Approx. 1,414 acres**



- Drop Point
- ⊕ Helibase
- Helispot
- ⊕ Incident Base
- ⊕ Incident Command Post
- ⊕ Repeater
- ⊕ Staging Area
- ⎵ Division Break
- Completed Line
- ⊗ Completed Dozer Line
- H - Completed Hand Line

Projection: Region 6 Albers  
Fire Perimeter last updated:  
July 18, 2018 at 1600 hrs



44°10'N 44°11'N 44°12'N 44°13'N 44°14'N 44°15'N 44°16'N 44°17'N 44°18'N 44°19'N 44°20'N 44°21'N 44°22'N 44°23'N 44°24'N 44°25'N 44°26'N 44°27'N 44°28'N 44°29'N 44°30'N 44°31'N 44°32'N 44°33'N 44°34'N 44°35'N 44°36'N 44°37'N 44°38'N 44°39'N 44°40'N 44°41'N 44°42'N 44°43'N 44°44'N 44°45'N 44°46'N 44°47'N 44°48'N 44°49'N 44°50'N 44°51'N 44°52'N 44°53'N 44°54'N 44°55'N 44°56'N 44°57'N 44°58'N 44°59'N 45°00'N