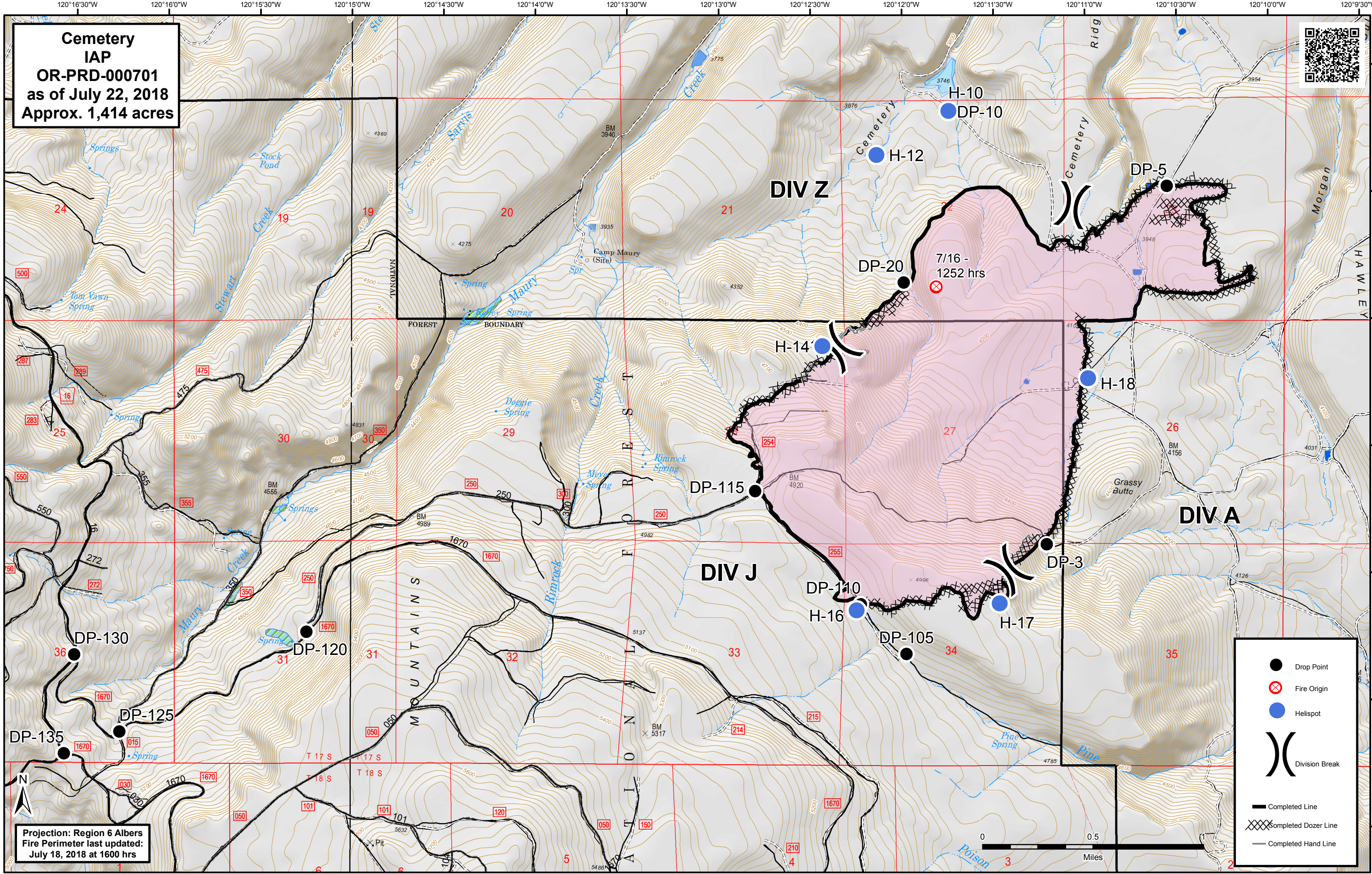


**Cemetery
IAP
OR-PRD-000701
as of July 22, 2018
Approx. 1,414 acres**



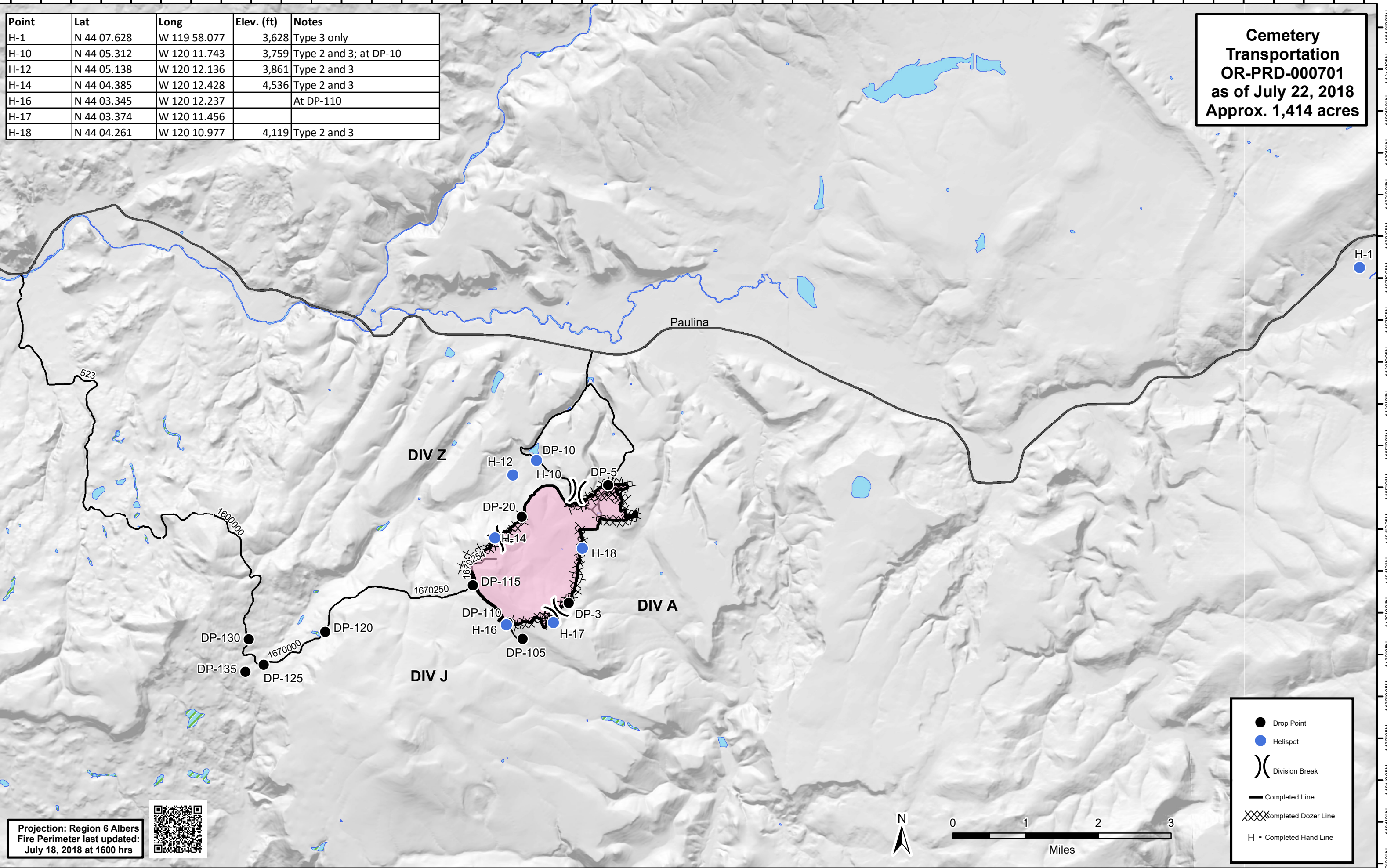
**Projection: Region 6 Albers
Fire Perimeter last updated:
July 18, 2018 at 1600 hrs**

- Drop Point
- Fire Origin
- Helispot
- Division Break
- Completed Line
- Completed Dozer Line
- Completed Hand Line

120°20'0"W 120°19'0"W 120°18'0"W 120°17'0"W 120°16'0"W 120°15'0"W 120°14'0"W 120°13'0"W 120°12'0"W 120°11'0"W 120°10'0"W 120°9'0"W 120°8'0"W 120°7'0"W 120°6'0"W 120°5'0"W 120°4'0"W 120°3'0"W 120°2'0"W 120°1'0"W 120°0'0"W 119°59'0"W 119°58'0"W

Point	Lat	Long	Elev. (ft)	Notes
H-1	N 44 07.628	W 119 58.077	3,628	Type 3 only
H-10	N 44 05.312	W 120 11.743	3,759	Type 2 and 3; at DP-10
H-12	N 44 05.138	W 120 12.136	3,861	Type 2 and 3
H-14	N 44 04.385	W 120 12.428	4,536	Type 2 and 3
H-16	N 44 03.345	W 120 12.237		At DP-110
H-17	N 44 03.374	W 120 11.456		
H-18	N 44 04.261	W 120 10.977	4,119	Type 2 and 3

**Cemetery
Transportation
OR-PRD-000701
as of July 22, 2018
Approx. 1,414 acres**



Projection: Region 6 Albers
Fire Perimeter last updated:
July 18, 2018 at 1600 hrs



- Drop Point
- Helispot
-) Division Break
- Completed Line
- XXXX Completed Dozer Line
- H - Completed Hand Line

44°10'30"N 44°10'0"N 44°9'30"N 44°9'0"N 44°8'30"N 44°8'0"N 44°7'30"N 44°7'0"N 44°6'30"N 44°6'0"N 44°5'30"N 44°5'0"N 44°4'30"N 44°4'0"N 44°3'30"N 44°3'0"N 44°2'30"N 44°2'0"N 44°1'30"N 44°1'0"N 44°0'30"N