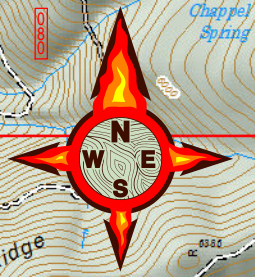
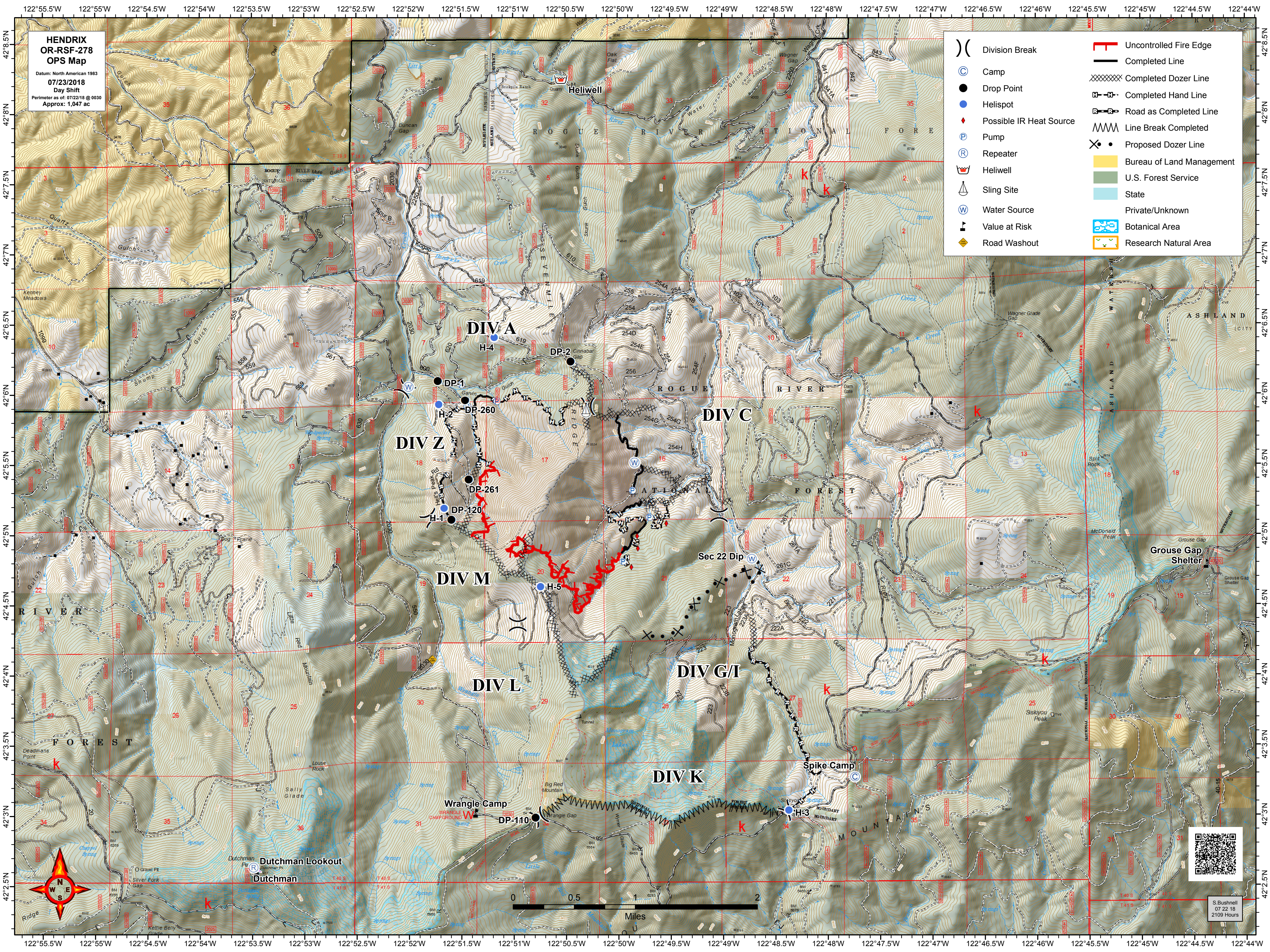


**HENDRIX
OR-RSF-278
OPS Map**

Datum: North American 1983
07/23/2018
 Day Shift
 Perimeter as of: 07/22/18 @ 0030
 Approx: 1,047 ac

- | | | | |
|--|-------------------------|--|---------------------------|
| | Division Break | | Uncontrolled Fire Edge |
| | Camp | | Completed Line |
| | Drop Point | | Completed Dozer Line |
| | Helispot | | Completed Hand Line |
| | Possible IR Heat Source | | Road as Completed Line |
| | Pump | | Line Break Completed |
| | Repeater | | Proposed Dozer Line |
| | Heliwell | | Bureau of Land Management |
| | Sling Site | | U.S. Forest Service |
| | Water Source | | State |
| | Value at Risk | | Private/Unknown |
| | Road Washout | | Botanical Area |
| | | | Research Natural Area |



S. Bushnell
 07 22 18
 2109 Hours