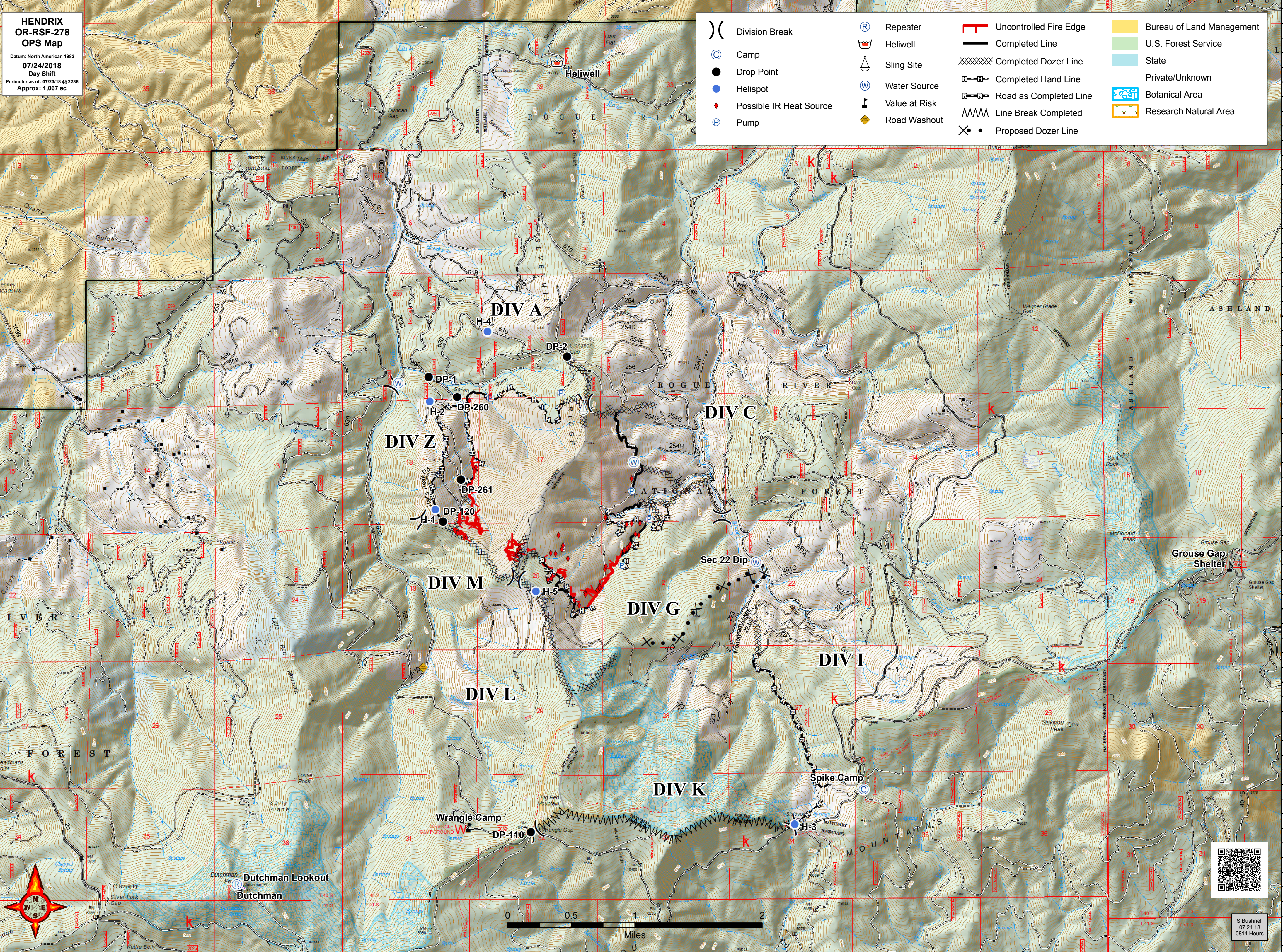
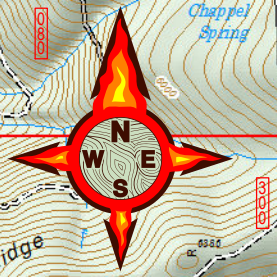


122°55.5'W 122°55'W 122°54.5'W 122°54'W 122°53.5'W 122°53'W 122°52.5'W 122°52'W 122°51.5'W 122°51'W 122°50.5'W 122°50'W 122°49.5'W 122°49'W 122°48.5'W 122°48'W 122°47.5'W 122°47'W 122°46.5'W 122°46'W 122°45.5'W 122°45'W 122°44.5'W 122°44'W



**HENDRIX  
OR-RSF-278  
OPS Map**  
Datum: North American 1983  
07/24/2018  
Day Shift  
Perimeter as of: 07/23/18 @ 2236  
Approx: 1,067 ac

	Division Break		Repeater		Uncontrolled Fire Edge		Bureau of Land Management
	Camp		Heliwell		Completed Line		U.S. Forest Service
	Drop Point		Sling Site		Completed Dozer Line		State
	Helispot		Water Source		Completed Hand Line		Private/Unknown
	Possible IR Heat Source		Value at Risk		Road as Completed Line		Botanical Area
	Pump		Road Washout		Line Break Completed		Research Natural Area
			Proposed Dozer Line				



S. Bushnell  
07/24/18  
0814 Hours

122°55.5'W 122°55'W 122°54.5'W 122°54'W 122°53.5'W 122°53'W 122°52.5'W 122°52'W 122°51.5'W 122°51'W 122°50.5'W 122°50'W 122°49.5'W 122°49'W 122°48.5'W 122°48'W 122°47.5'W 122°47'W 122°46.5'W 122°46'W 122°45.5'W 122°45'W 122°44.5'W 122°44'W