

**HENDRIX  
OR-RSF-278  
Repair Status Map**  
Datum: North American 1983  
07/25/2018  
Day Shift  
Perimeter as of: 07/25/18 @ 0152  
Approx: 1,081 ac

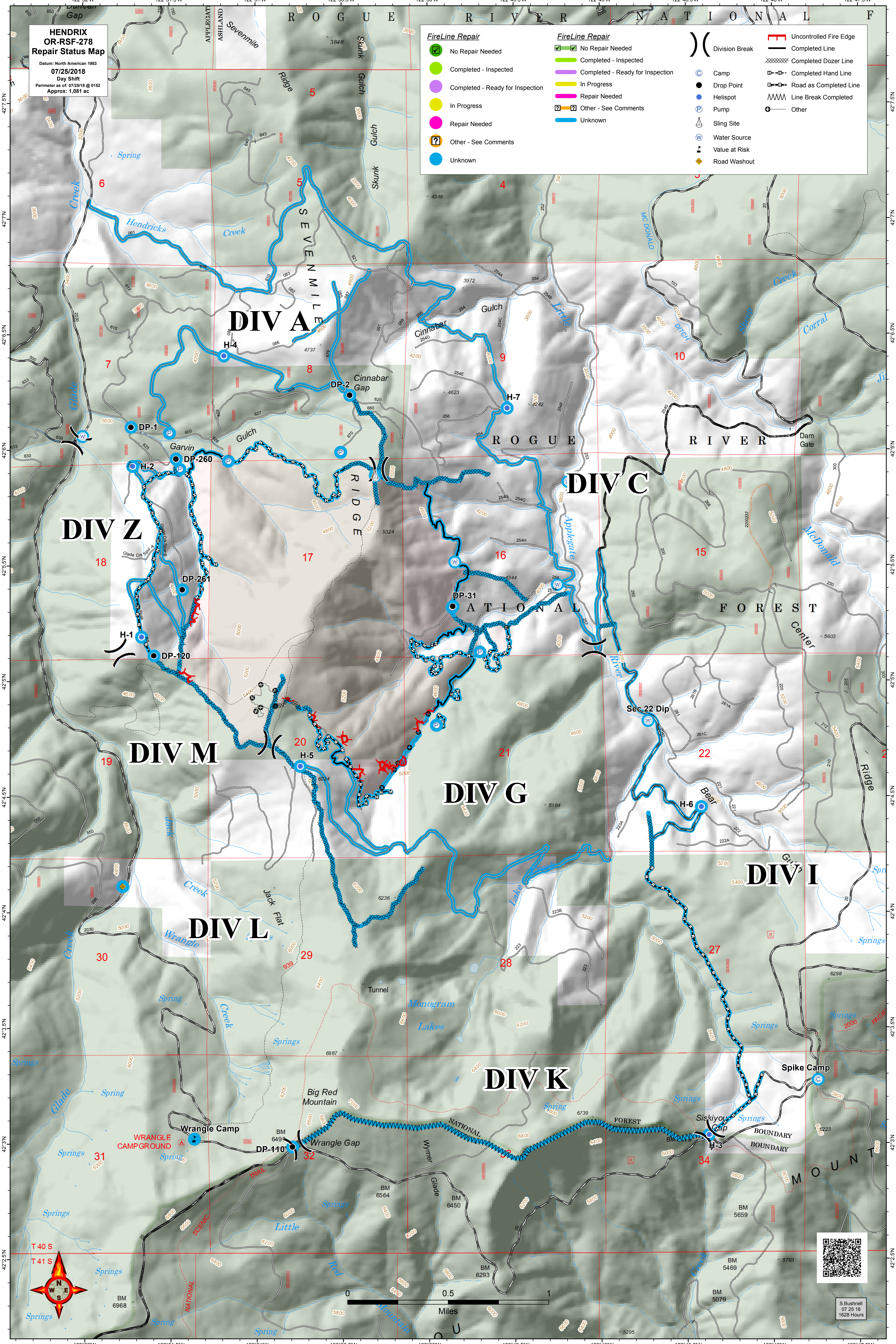
**FireLine Repair**

- ✔ No Repair Needed
- ✔ Completed - Inspected
- ✔ Completed - Ready for Inspection
- ✔ In Progress
- ✔ Repair Needed
- ? Other - See Comments
- ✔ Unknown

**FireLine Repair**

- ✔ No Repair Needed
- ✔ Completed - Inspected
- ✔ Completed - Ready for Inspection
- ✔ In Progress
- ✔ Repair Needed
- ? Other - See Comments
- ✔ Unknown

- ⌋ Uncontrolled Fire Edge
- Completed Line
- Completed Dozer Line
- Completed Hand Line
- Road as Completed Line
- Line Break Completed
- Other
- C Camp
- Drop Point
- Helispot
- P Pump
- △ Sling Site
- W Water Source
- ⚠ Value at Risk
- ◆ Road Washout



S. Bushnell  
07/25/18  
1628 Hours