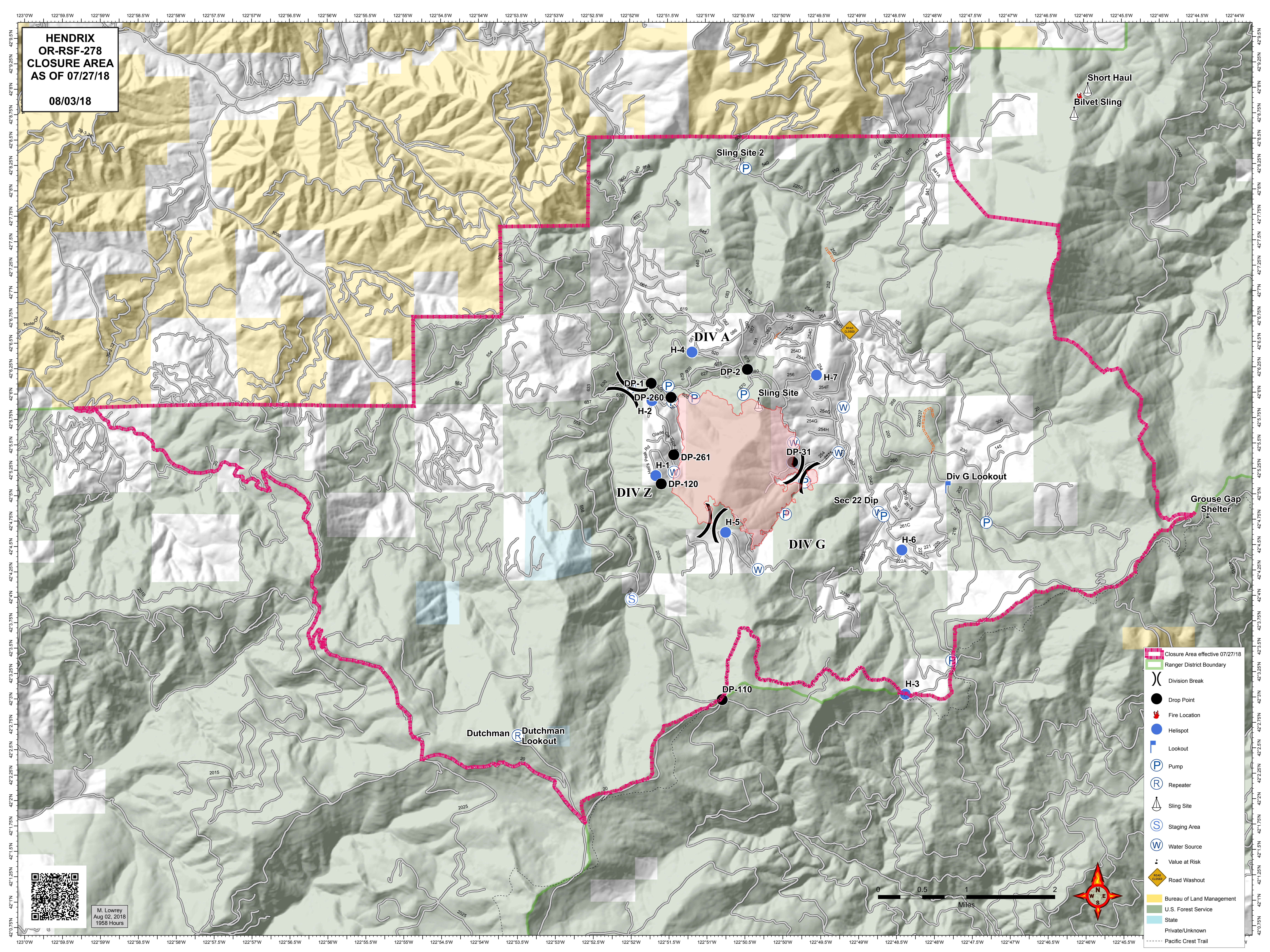


**HENDRIX  
OR-RSF-278  
CLOSURE AREA  
AS OF 07/27/18**

**08/03/18**



- Closure Area effective 07/27/18
- Ranger District Boundary
- Division Break
- Drop Point
- Fire Location
- Helispot
- Lookout
- Pump
- Repeater
- Sling Site
- Staging Area
- Water Source
- Value at Risk
- Road Washout
- Bureau of Land Management
- U.S. Forest Service
- State
- Private/Unknown
- Pacific Crest Trail



M. Lowrey  
Aug 02, 2018  
1956 Hours

