

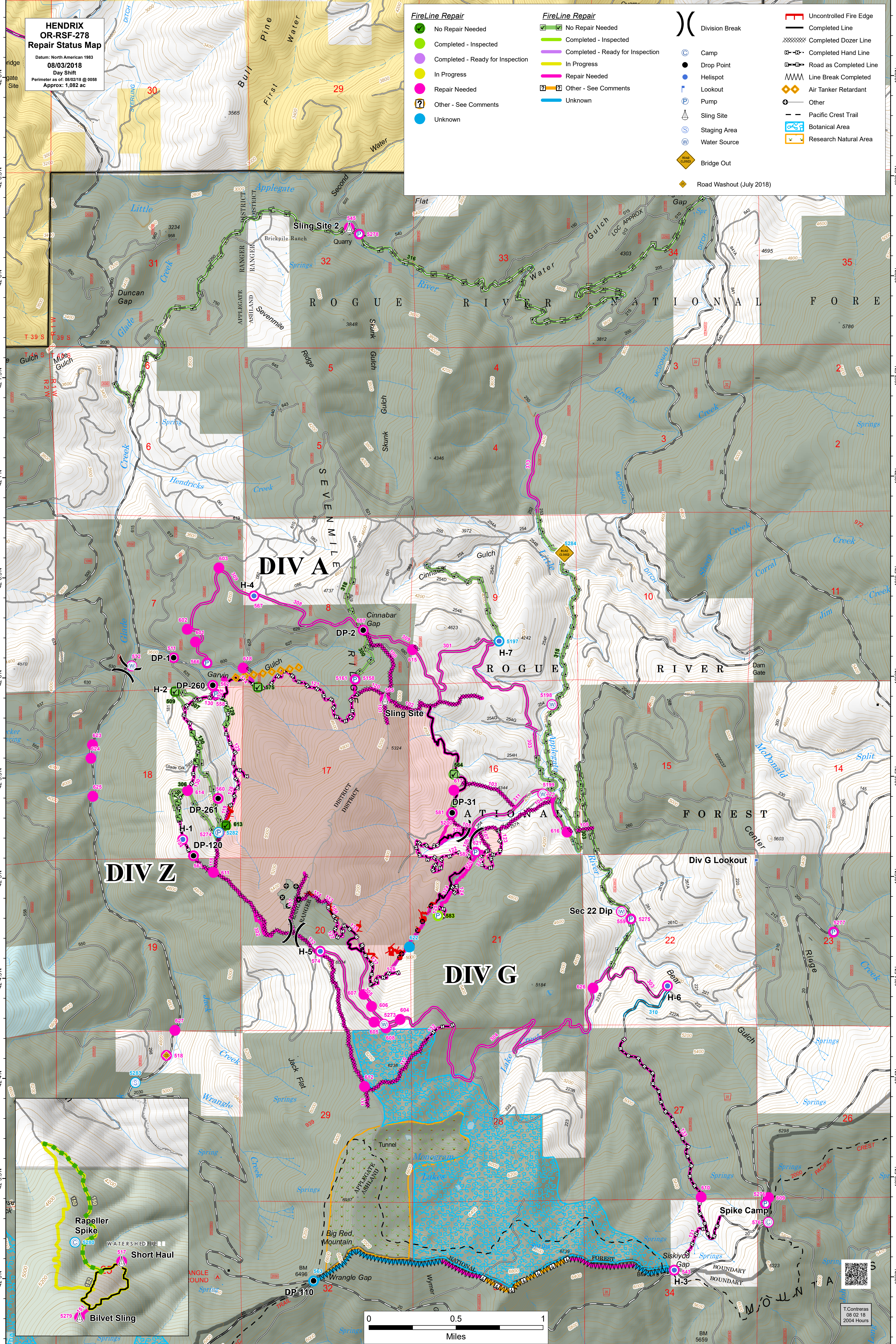
**HENDRIX  
OR-RSF-278  
Repair Status Map**  
Datum: North American 1983  
08/03/2018  
Day Shift  
Perimeter as of: 08/02/18 @ 0058  
Approx: 1,082 ac

- FireLine Repair**
- No Repair Needed
  - Completed - Inspected
  - Completed - Ready for Inspection
  - In Progress
  - Repair Needed
  - ? Other - See Comments
  - Unknown

- FireLine Repair**
- No Repair Needed
  - Completed - Inspected
  - Completed - Ready for Inspection
  - In Progress
  - Repair Needed
  - ? Other - See Comments
  - Unknown

- ( Division Break
- Camp
- Drop Point
- Helispot
- P Lookout
- P Pump
- S Sling Site
- S Staging Area
- W Water Source
- ◆ Bridge Out
- ◆ Road Washout (July 2018)

- Uncontrolled Fire Edge
- Completed Line
- Completed Dozer Line
- Completed Hand Line
- Road as Completed Line
- Line Break Completed
- ◆ Air Tanker Retardant
- Other
- Pacific Crest Trail
- Botanical Area
- Research Natural Area



T. Contreras  
08/02/18  
2004 Hours