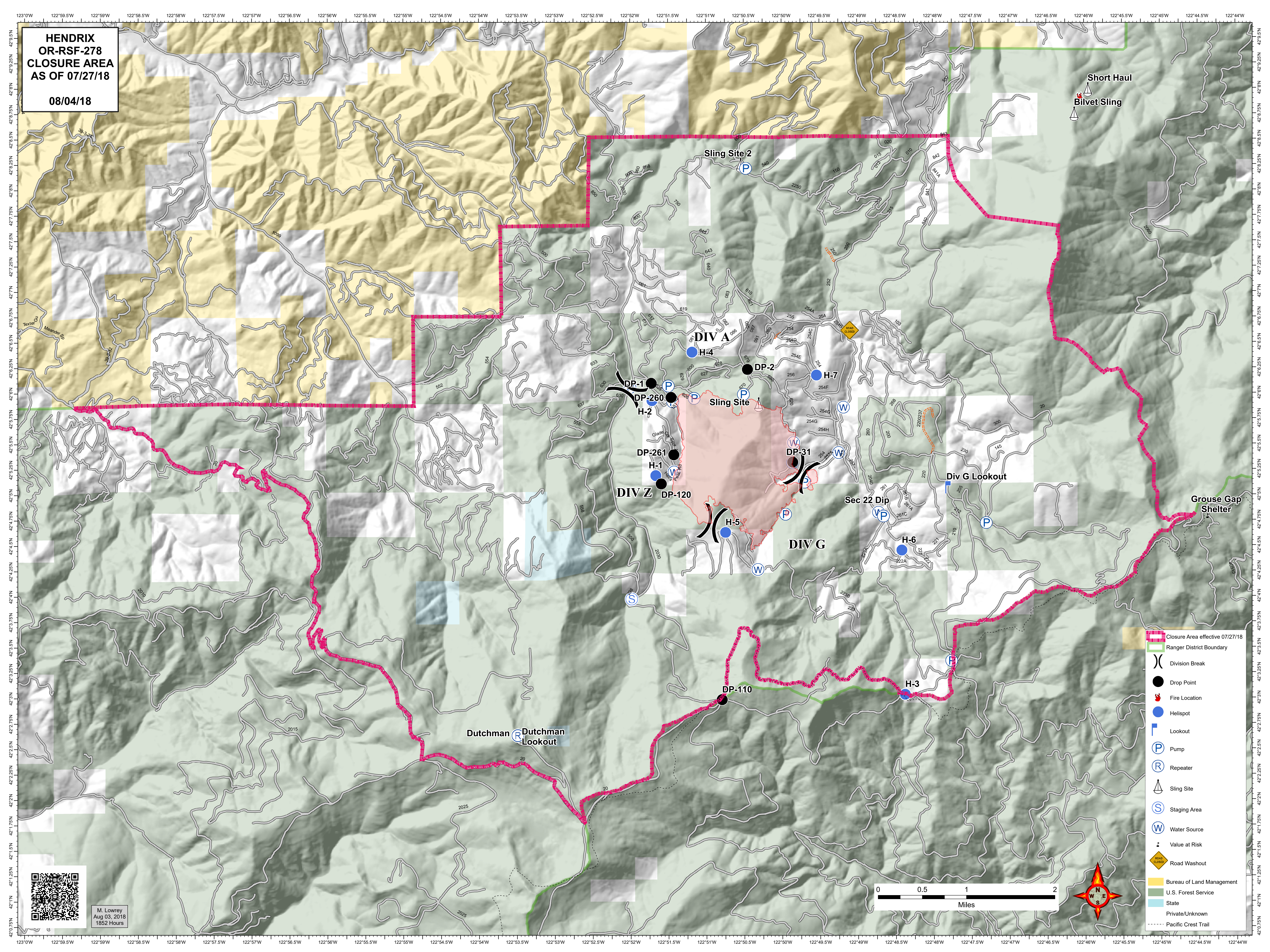
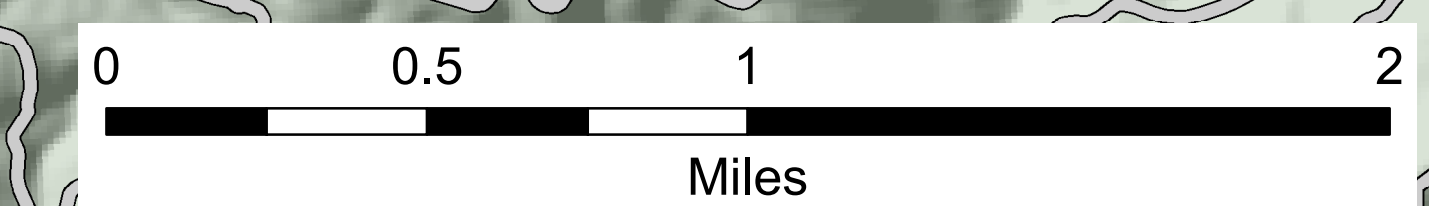


**HENDRIX
OR-RSF-278
CLOSURE AREA
AS OF 07/27/18**

08/04/18



M. Lowrey
Aug 03, 2018
1852 Hours



- Closure Area effective 07/27/18
- Ranger District Boundary
- Division Break
- Drop Point
- Fire Location
- Helispot
- Lookout
- Pump
- Repeater
- Sling Site
- Staging Area
- Water Source
- Value at Risk
- Road Washout
- Bureau of Land Management
- U.S. Forest Service
- State
- Private/Unknown
- Pacific Crest Trail