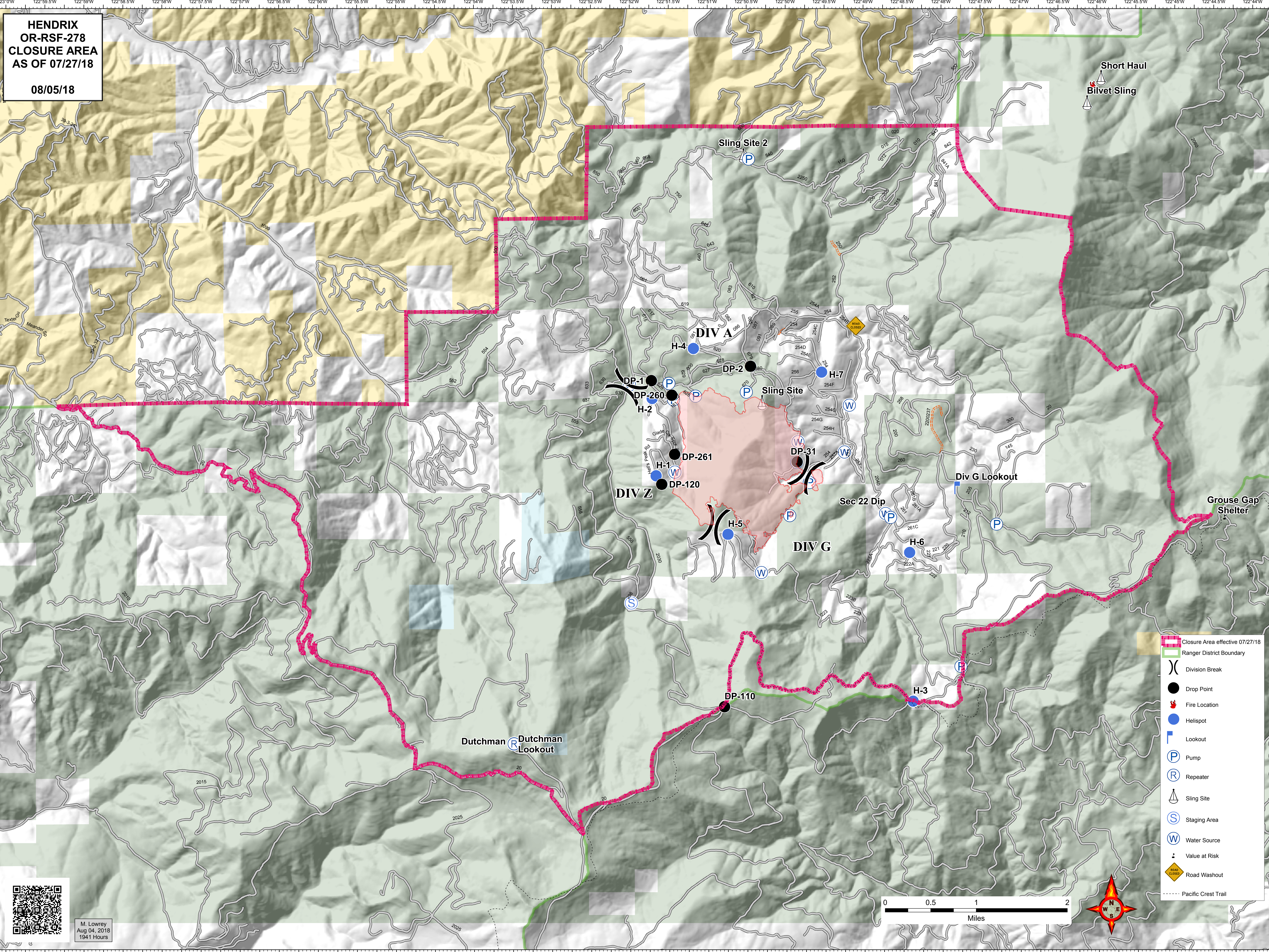
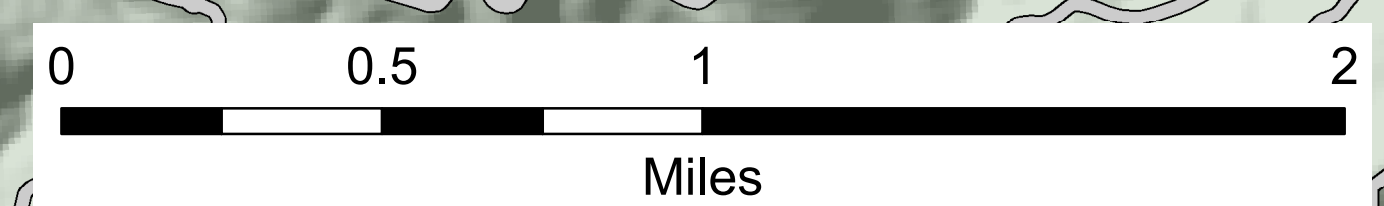


**HENDRIX
OR-RSF-278
CLOSURE AREA
AS OF 07/27/18**

08/05/18



- Closure Area effective 07/27/18
- Ranger District Boundary
- Division Break
- Drop Point
- Fire Location
- Helispot
- Lookout
- Pump
- Repeater
- Sling Site
- Staging Area
- Water Source
- Value at Risk
- Road Washout
- Pacific Crest Trail



M. Lowrey
Aug 04, 2018
1941 Hours