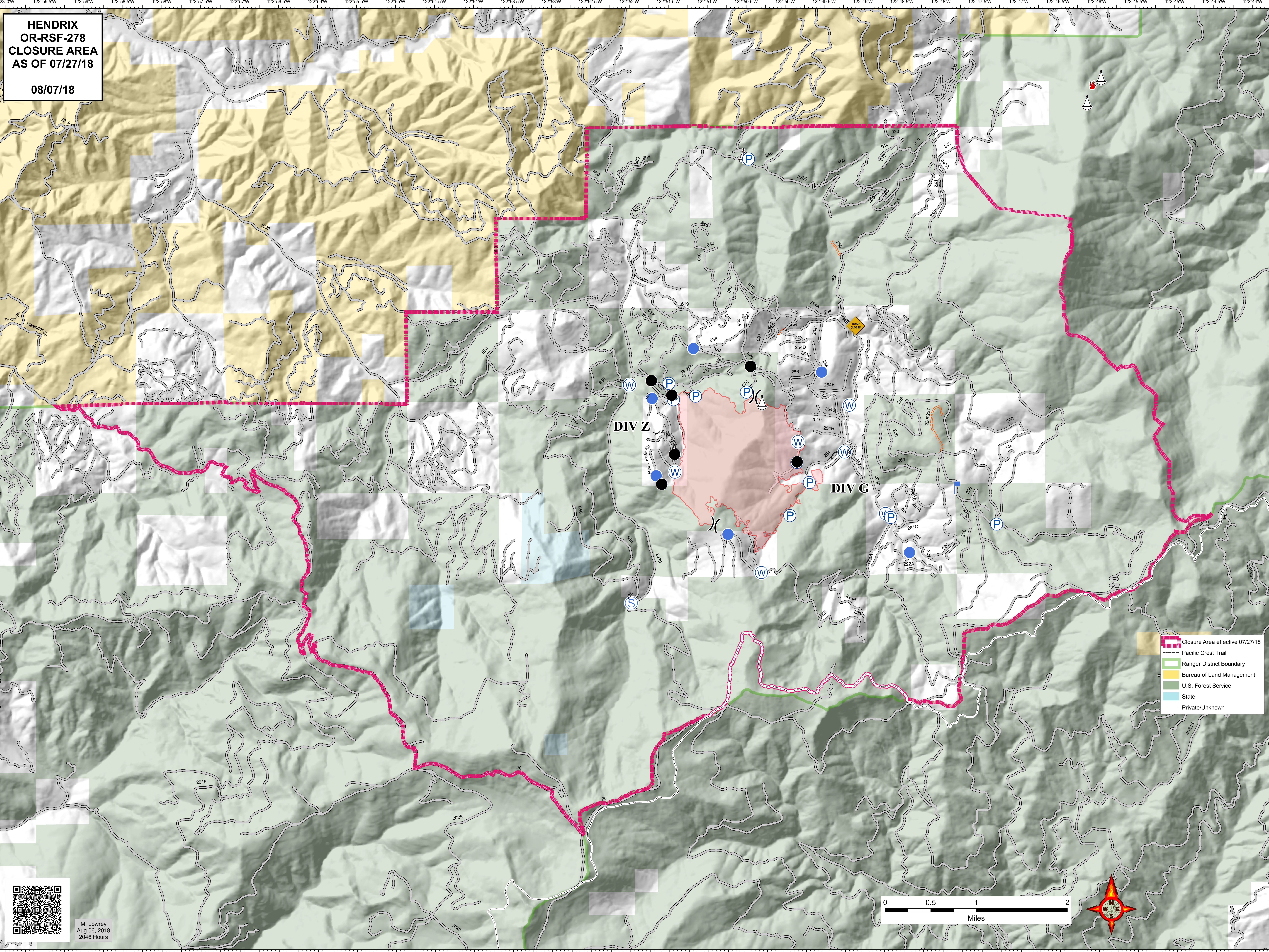


**HENDRIX
OR-RSF-278
CLOSURE AREA
AS OF 07/27/18**

08/07/18



- Closure Area effective 07/27/18
- Pacific Crest Trail
- Ranger District Boundary
- Bureau of Land Management
- U.S. Forest Service
- State
- Private/Unknown



M. Lowrey
Aug 06, 2018
2046 Hours

