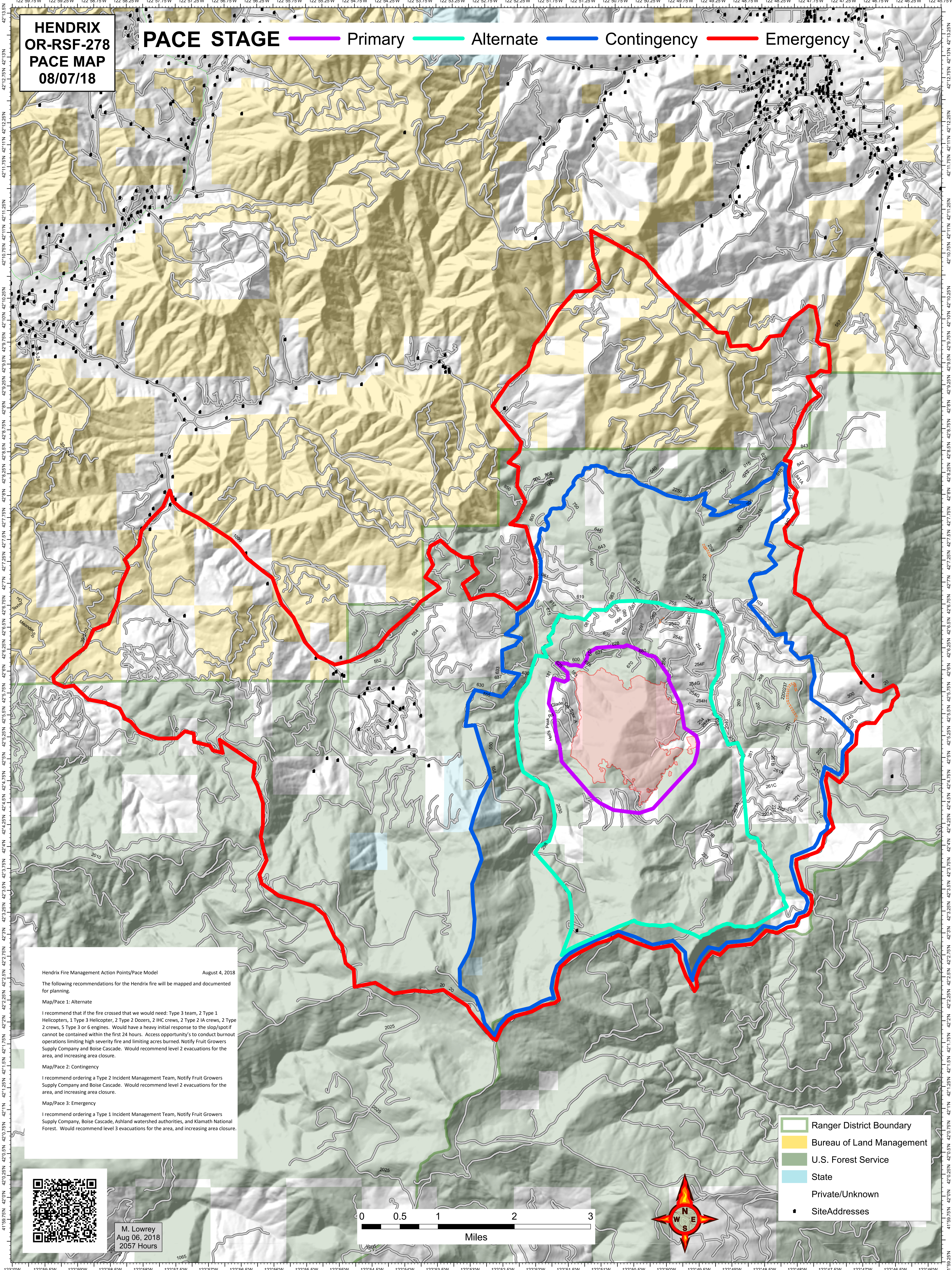


**HENDRIX
OR-RSF-278
PACE MAP
08/07/18**

PACE STAGE — Primary — Alternate — Contingency — Emergency



Hendrix Fire Management Action Points/Pace Model August 4, 2018

The following recommendations for the Hendrix fire will be mapped and documented for planning.

Map/Pace 1: Alternate

I recommend that if the fire crossed that we would need: 2 Type 3 teams, 2 Type 1 Helicopters, 1 Type 3 Helicopter, 2 Type 2 Dozers, 2 IHC crews, 2 Type 2 IA crews, 2 Type 2 crews, 5 Type 3 or 6 engines. Would have a heavy initial response to the stop/spot fire cannot be contained within the first 24 hours. Access opportunity's to conduct burnout operations limiting high severity fire and limiting acres burned. Notify Fruit Growers Supply Company and Boise Cascade. Would recommend level 2 evacuations for the area, and increasing area closure.

Map/Pace 2: Contingency

I recommend ordering a Type 2 Incident Management Team, Notify Fruit Growers Supply Company and Boise Cascade. Would recommend level 2 evacuations for the area, and increasing area closure.

Map/Pace 3: Emergency

I recommend ordering a Type 1 Incident Management Team, Notify Fruit Growers Supply Company, Boise Cascade, Ashland watershed authorities, and Klamath National Forest. Would recommend level 3 evacuations for the area, and increasing area closure.



M. Lowrey
Aug 06, 2018
2057 Hours



- Ranger District Boundary
- Bureau of Land Management
- U.S. Forest Service
- State
- Private/Unknown
- SiteAddresses