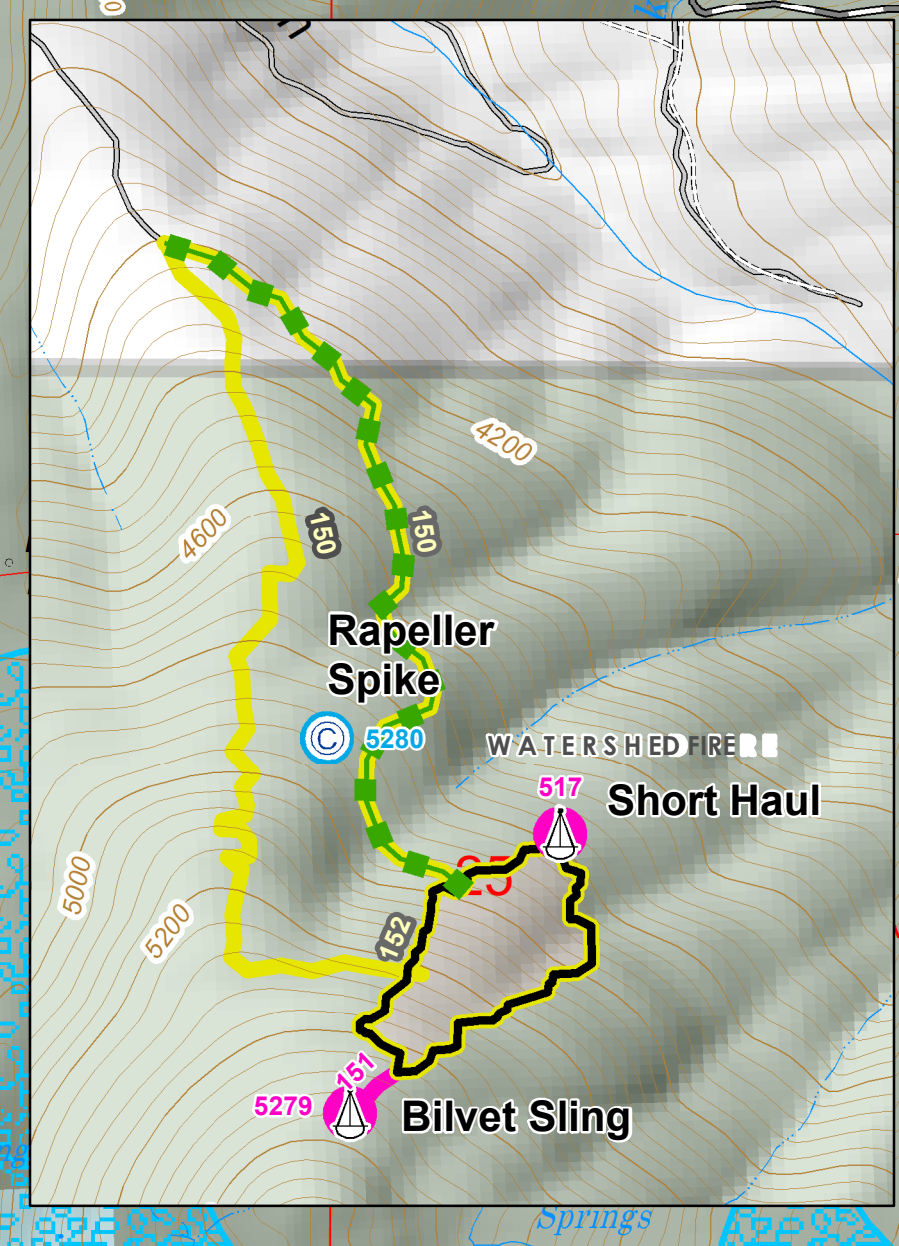
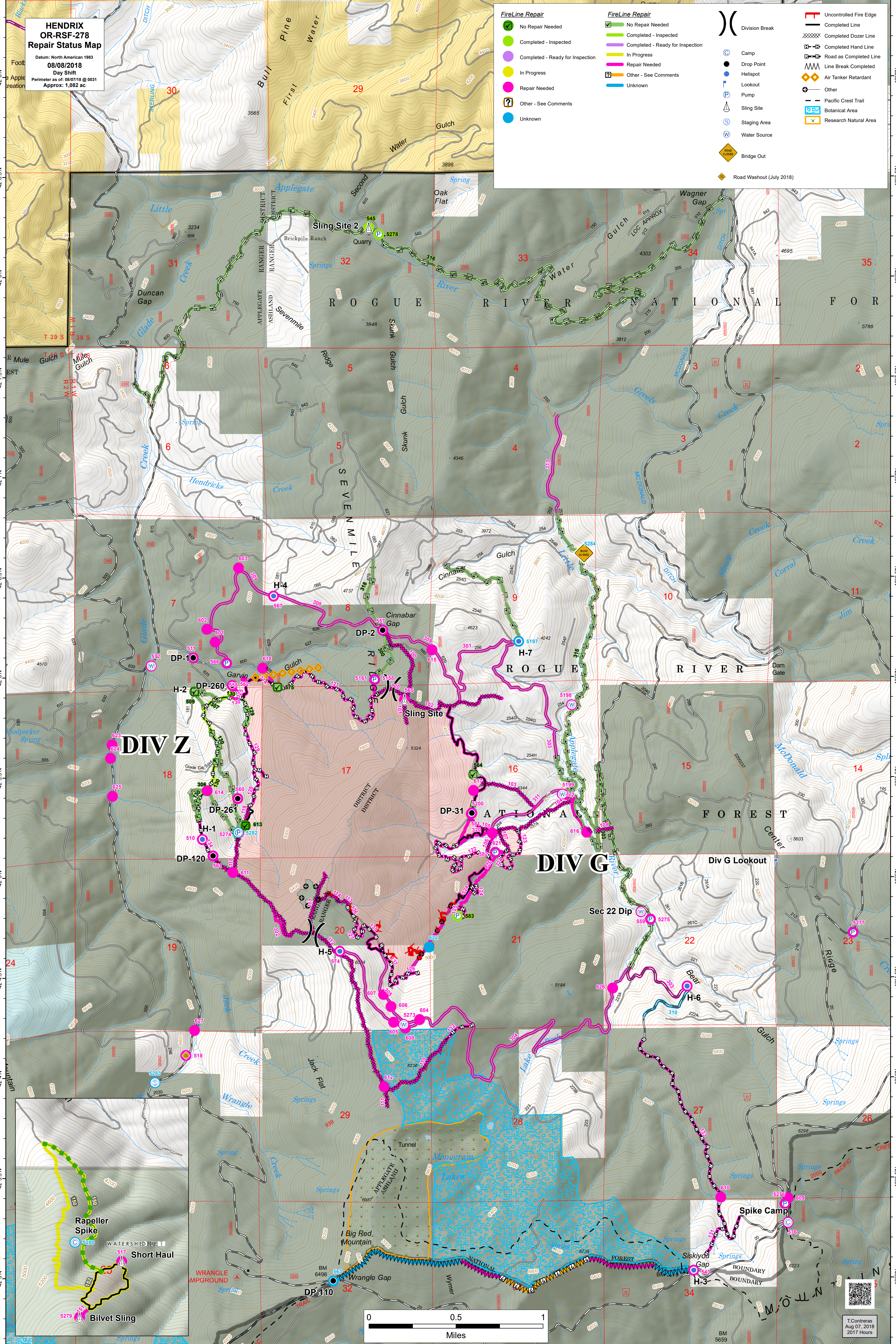


**HENDRIX
OR-RSF-278
Repair Status Map**

Datum: North American 1983
08/08/2018
Day Shift
Perimeter as of: 08/07/18 @ 0031
Approx: 1,082 ac

<p>FireLine Repair</p> <ul style="list-style-type: none"> ✔ No Repair Needed ▬ Completed - Inspected ▬ Completed - Ready for Inspection ▬ In Progress ▬ Repair Needed ? Other - See Comments ● Unknown 	<p>FireLine Repair</p> <ul style="list-style-type: none"> ✔ No Repair Needed ▬ Completed - Inspected ▬ Completed - Ready for Inspection ▬ In Progress ▬ Repair Needed ? Other - See Comments ▬ Unknown 	<ul style="list-style-type: none">) Division Break ● Camp ● Drop Point ● Helispot P Lookout P Pump S Sling Site S Staging Area W Water Source) Bridge Out ◆ Road Washout (July 2018) 	<ul style="list-style-type: none"> Uncontrolled Fire Edge Completed Line Completed Dozer Line Completed Hand Line Road as Completed Line Line Break Completed ◆ Air Tanker Retardant ○ Other Pacific Crest Trail B Botanical Area R Research Natural Area
---	---	--	--



T Contreras
Aug 07, 2018
2017 Hours