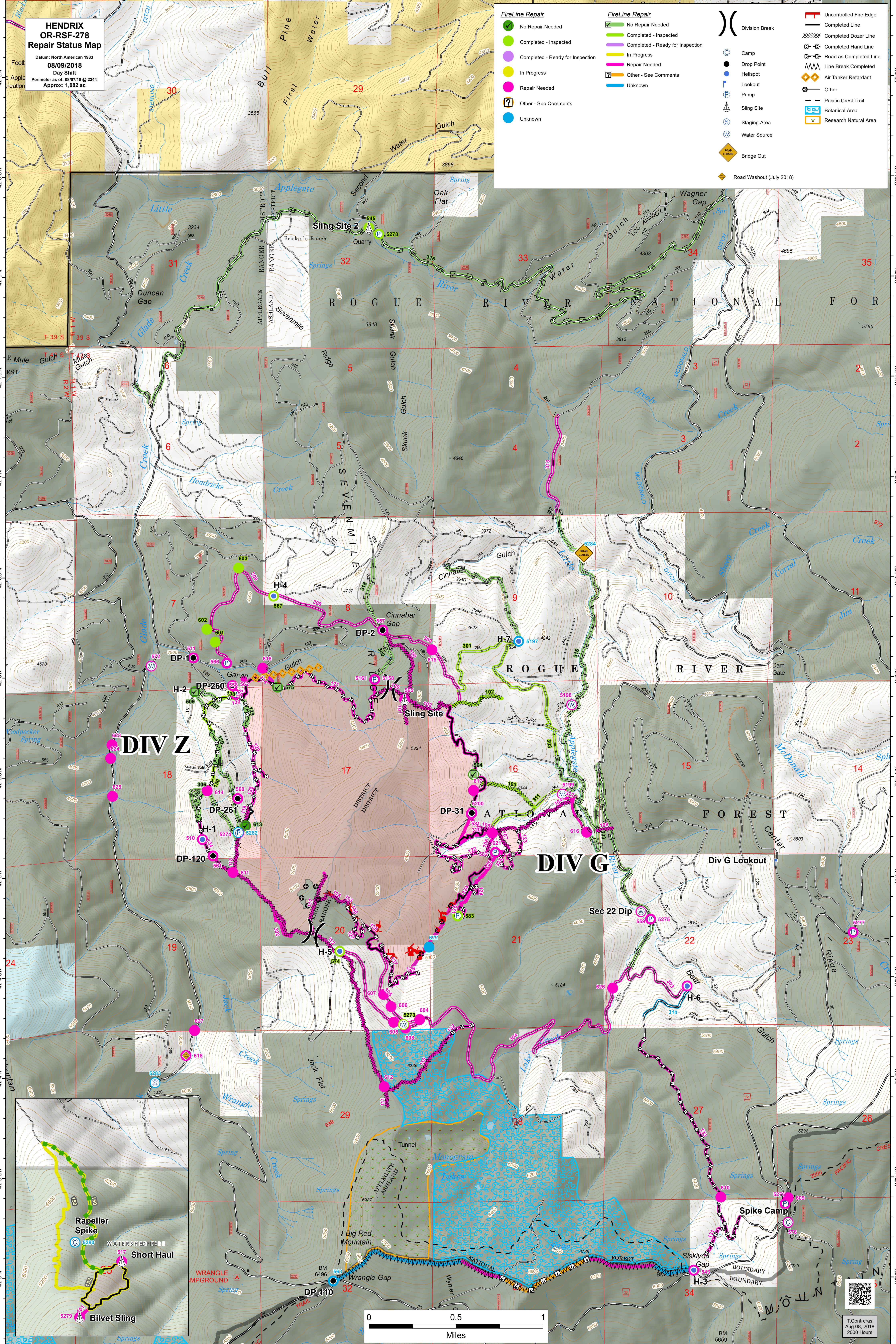


**HENDRIX
OR-RSF-278
Repair Status Map**

Datum: North American 1983
08/09/2018
Day Shift
Perimeter as of: 08/07/18 @ 2244
Approx: 1,082 ac

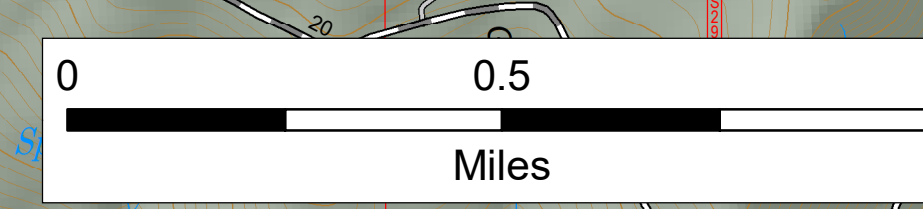
<p>FireLine Repair</p> <ul style="list-style-type: none"> ✔ No Repair Needed ○ Completed - Inspected ○ Completed - Ready for Inspection ○ In Progress ○ Repair Needed ? Other - See Comments ○ Unknown 	<p>FireLine Repair</p> <ul style="list-style-type: none"> ✔ No Repair Needed ▬ Completed - Inspected ▬ Completed - Ready for Inspection ▬ In Progress ▬ Repair Needed ? Other - See Comments ▬ Unknown 	<ul style="list-style-type: none"> Division Break Completed Line Completed Dozer Line Completed Hand Line Road as Completed Line Line Break Completed ♦ Air Tanker Retardant + Other Pacific Crest Trail 🌿 Botanical Area 🌿 Research Natural Area
<ul style="list-style-type: none"> C Camp ● Drop Point P Helispot P Lookout P Pump P Sling Site S Staging Area W Water Source ♦ Bridge Out ♦ Road Washout (July 2018) 		



DIV Z

DIV G

Div G Lookout



T Contreras
Aug 08, 2018
2000 Hours