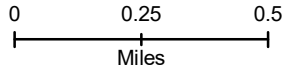


HENDRIX
Public Information Map
 Perimeter as of: 08/10/18 @ 2330
 Approx: 1,082 ac



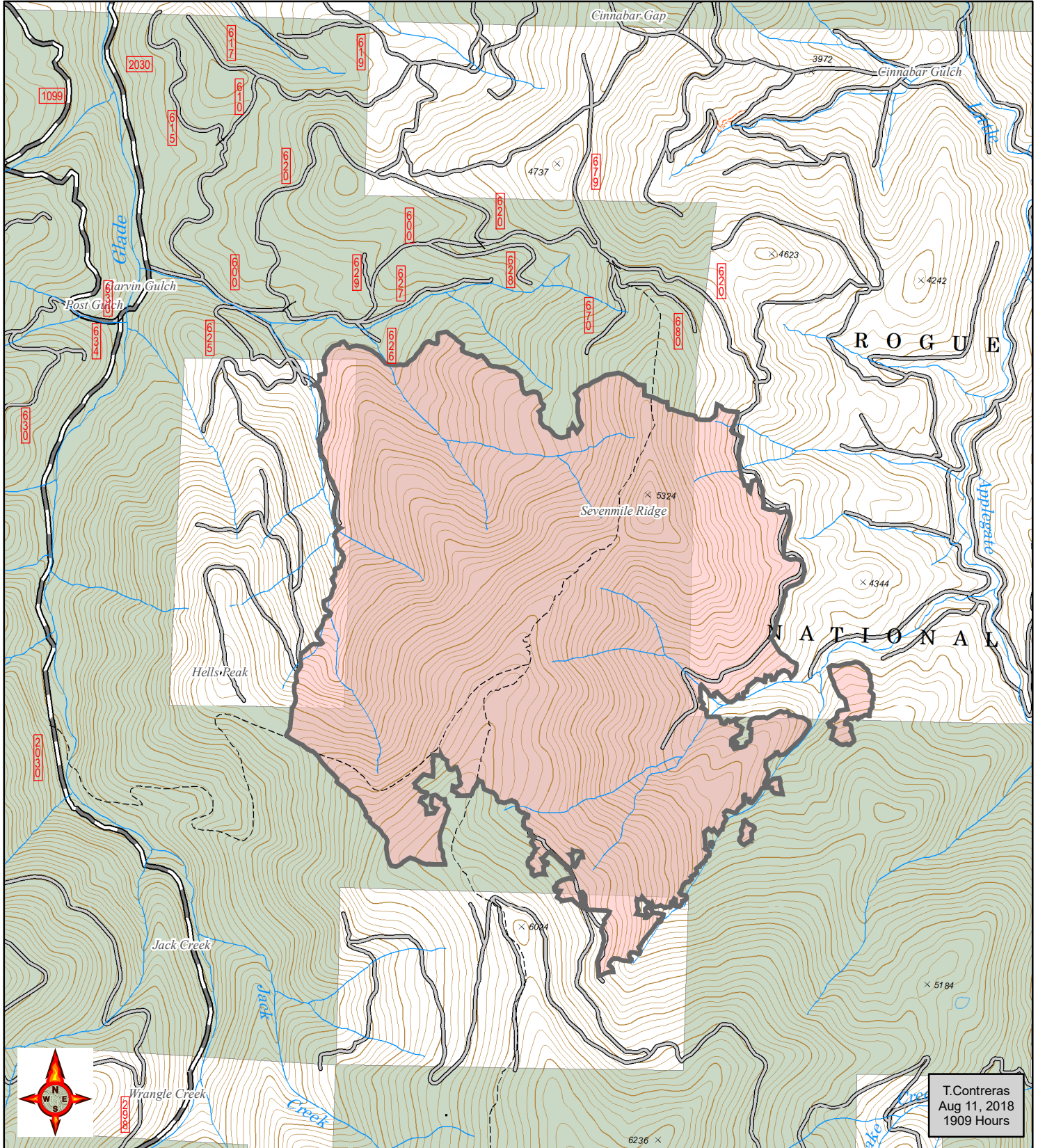
- Fire Area
- U.S. Forest Service
- Private/Unknown



Disclaimer:

While GLZ T3 makes every effort to represent the data shown on these maps as completely and accurately as possible, no warranty is given, expressed or implied, as to the accuracy, reliability, or completeness of these data. In addition, GLZ T3 and/or other participating agencies shall not be held liable for improper or incorrect use of the data described and/or contained herein. Graphical representations provided by the use of this data does not represent any legal description of the data herein and are provided only as a general representation of the data. No indication/statement of fire containment is given, expressed or implied by this product.

More Information:
<http://inciweb.nwcg.gov>



T.Conteras
 Aug 11, 2018
 1909 Hours