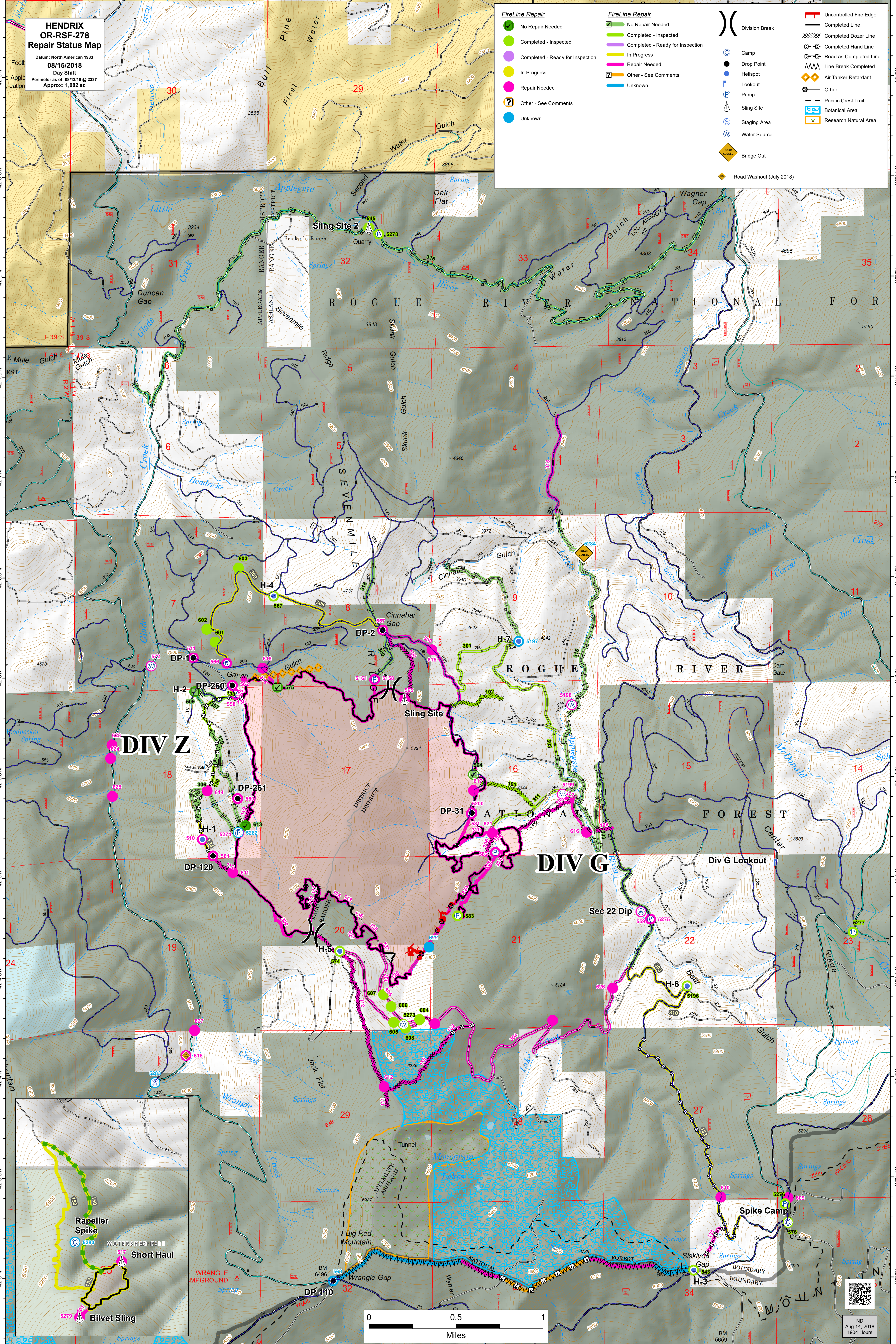


**HENDRIX
OR-RSF-278
Repair Status Map**

Datum: North American 1983
08/15/2018
Day Shift
Perimeter as of: 08/13/18 @ 2237
Approx: 1,082 ac

<p>FireLine Repair</p> <ul style="list-style-type: none"> ✔ No Repair Needed ○ Completed - Inspected ○ Completed - Ready for Inspection ○ In Progress ○ Repair Needed ? Other - See Comments ○ Unknown 	<p>FireLine Repair</p> <ul style="list-style-type: none"> ✔ No Repair Needed ▬ Completed - Inspected ▬ Completed - Ready for Inspection ▬ In Progress ▬ Repair Needed ? Other - See Comments ▬ Unknown 	<ul style="list-style-type: none"> Division Break Completed Line Completed Dozer Line Completed Hand Line Road as Completed Line Line Break Completed ♦ Air Tanker Retardant ♦ Other Pacific Crest Trail B Botanical Area R Research Natural Area
---	---	--

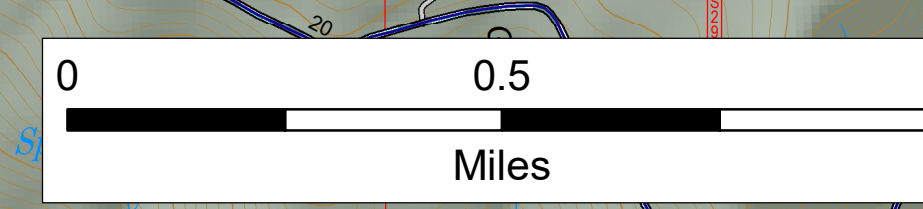
<ul style="list-style-type: none"> C Camp ● Drop Point ● Helispot ● Lookout ● Pump ● Sling Site ● Staging Area ● Water Source ♦ Bridge Out ♦ Road Washout (July 2018)



DIV Z

DIV G

Div G Lookout



ND
Aug 14, 2018
1904 Hours