

122°51'W

122°50'W

### Infrared Map

Hendrix (OR-RSF-000278)

Map Date: 07/24/2018

Imagery Date: 07/23/2018

Imagery Time: 2336 MDT

IR Interpreted Acres: 1,067 acres

IRIN: Tammy Hocut

● Isolated Heat Sources

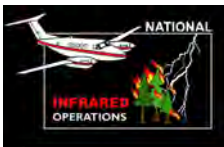
□ Heat Perimeter

▨ Intense Heat

◻ Scattered Heat

WGS 1984 UTM Zone 10N

0 0.1 0.2 0.4 0.6 0.8 Miles

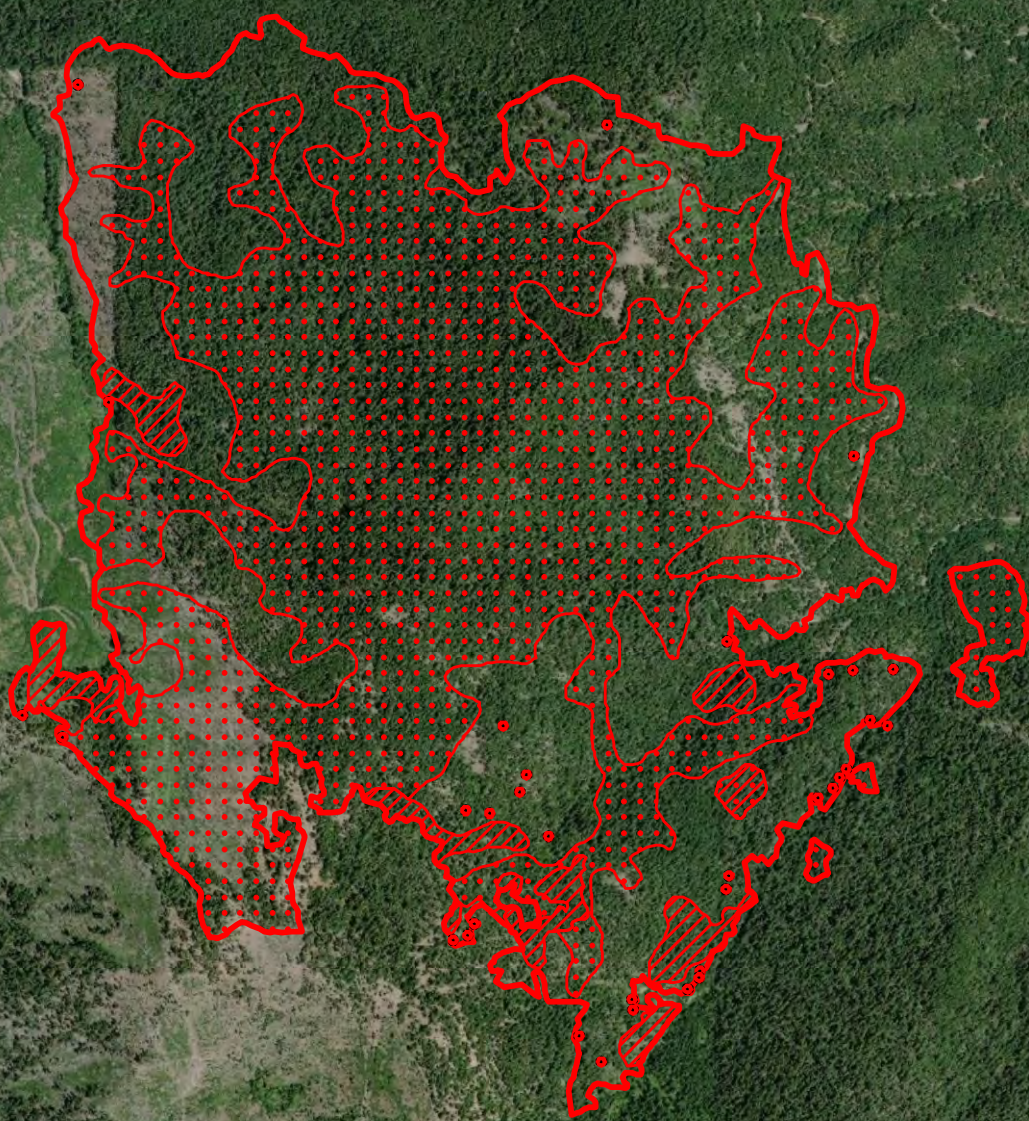


42°6'N

42°6'N

42°5'N

42°5'N



Source: Esri, DigitalGlobe, GeoEye, Earthstar Geographics, CNES/Airbus DS, USDA, USGS, AeroGRID, IGN, and the GIS User Community

122°51'W

122°50'W