

BOXCAR / JACK KNIFE

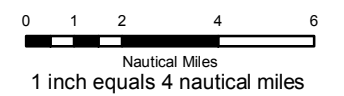
OR-PRD-410 / 440

PILOT Map

06/27/2018
 Approx. 100,207 ac / 15,676 ac
 Perimeter as of 06/26/18 @ 1830

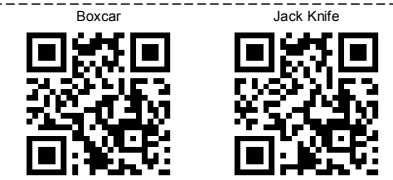


Declination 14.46° E



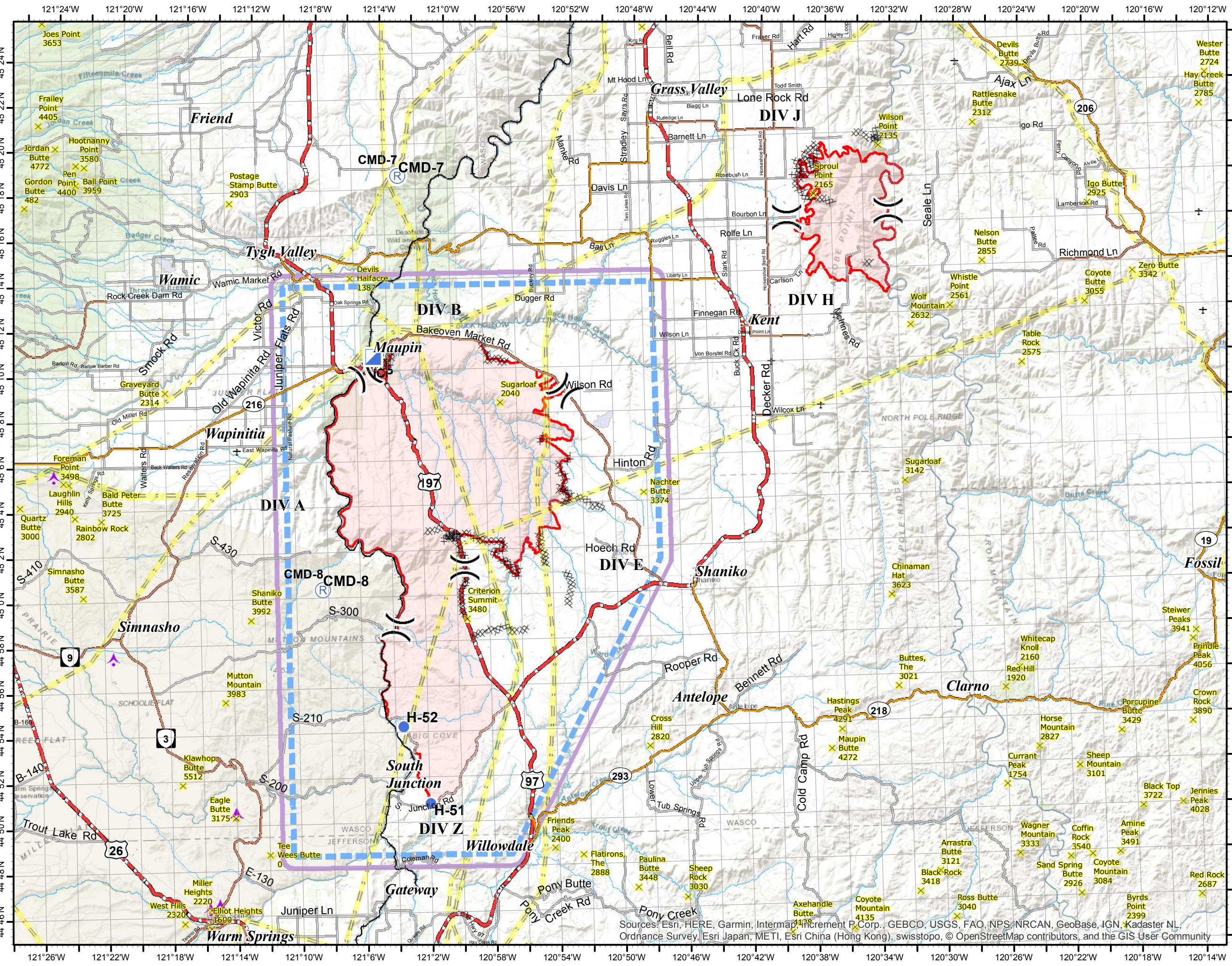
- TFR
- Division Break
- Helispot
- Incident Command Post
- Repeater
- Aerial Hazard
- Utility
- Fire Area

LABEL	LON_DM	LAT_DM
TYPE: Helispot		
H-51	121 01.942 W 44 50.827 N	
H-52	121 03.505 W 44 54.266 N	
TYPE: Repeater		
CMD-7	121 03.091 W 45 18.624 N	
CMD-8	121 08.330 W 45 00.389 N	
TYPE: Drop Point - BOXCAR		
DP-21	121 04.131 W 45 10.293 N	
DP-22	121 03.760 W 45 10.781 N	
DP-30	120 52.988 W 45 08.939 N	
DP-33	120 50.321 W 45 04.542 N	
DP-36	120 53.005 W 44 59.404 N	
DP-40	120 59.594 W 44 52.718 N	
DP-49	121 03.683 W 44 51.388 N	
TYPE: Drop Point - JACK KNIFE		
DP-1	120 35.447 W 45 19.828 N	
DP-2	120 38.182 W 45 16.335 N	
DP-3	120 40.038 W 45 13.730 N	
DP-4	120 35.127 W 45 13.300 N	



S. Bushnell
 06 26 18
 2121 Hours

Datum: North American 1983



Sources: Esri, HERE, Garmin, Intermap, increment P Corp., GEBCO, USGS, FAO, NPS, NRCAN, GeoBase, IGN, Kadaster NL, Ordnance Survey, Esri Japan, METI, Esri China (Hong Kong), swisstopo, © OpenStreetMap contributors, and the GIS User Community