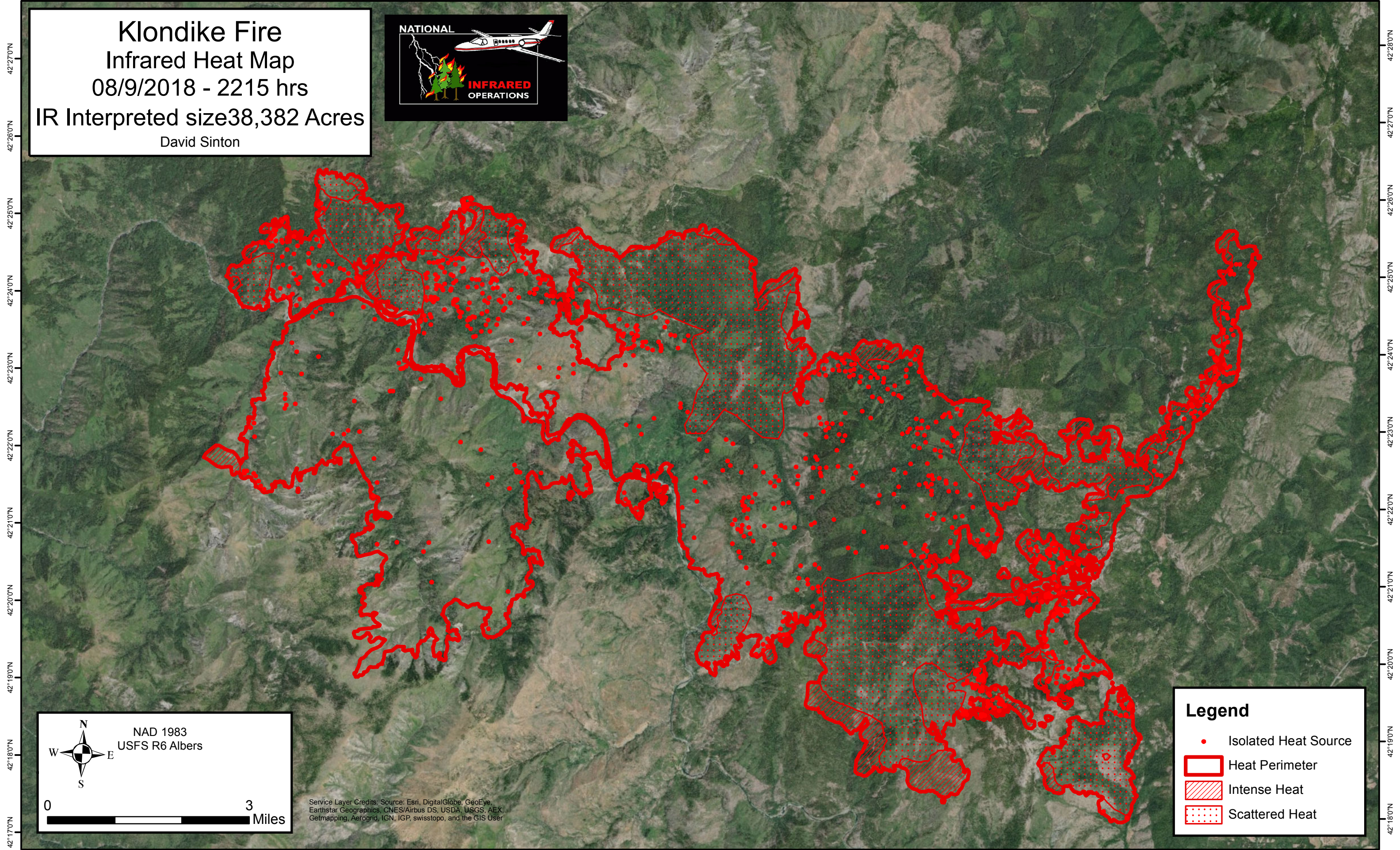


123°58'0"W 123°57'0"W 123°56'0"W 123°55'0"W 123°54'0"W 123°53'0"W 123°52'0"W 123°51'0"W 123°50'0"W 123°49'0"W 123°48'0"W 123°47'0"W 123°46'0"W 123°45'0"W 123°44'0"W 123°43'0"W 123°42'0"W 123°41'0"W 123°40'0"W 123°39'0"W 123°38'0"W 123°37'0"W 123°36'0"W

**Klondike Fire**  
Infrared Heat Map  
08/9/2018 - 2215 hrs  
IR Interpreted size 38,382 Acres  
David Sinton



NAD 1983  
USFS R6 Albers

0 3 Miles

Service Layer Credits: Source: Esri, DigitalGlobe, GeoEye, Earthstar Geographics, CNES/Airbus DS, USDA, USGS, AEX, Getmapping, Aerogrid, IGN, IGP, swisstopo, and the GIS User

**Legend**

- Isolated Heat Source
- ▭ Heat Perimeter
- ▨ Intense Heat
- ▤ Scattered Heat

123°58'0"W 123°57'0"W 123°56'0"W 123°55'0"W 123°54'0"W 123°53'0"W 123°52'0"W 123°51'0"W 123°50'0"W 123°49'0"W 123°48'0"W 123°47'0"W 123°46'0"W 123°45'0"W 123°44'0"W 123°43'0"W 123°42'0"W 123°41'0"W 123°40'0"W 123°39'0"W 123°38'0"W 123°37'0"W 123°36'0"W 123°35'0"W