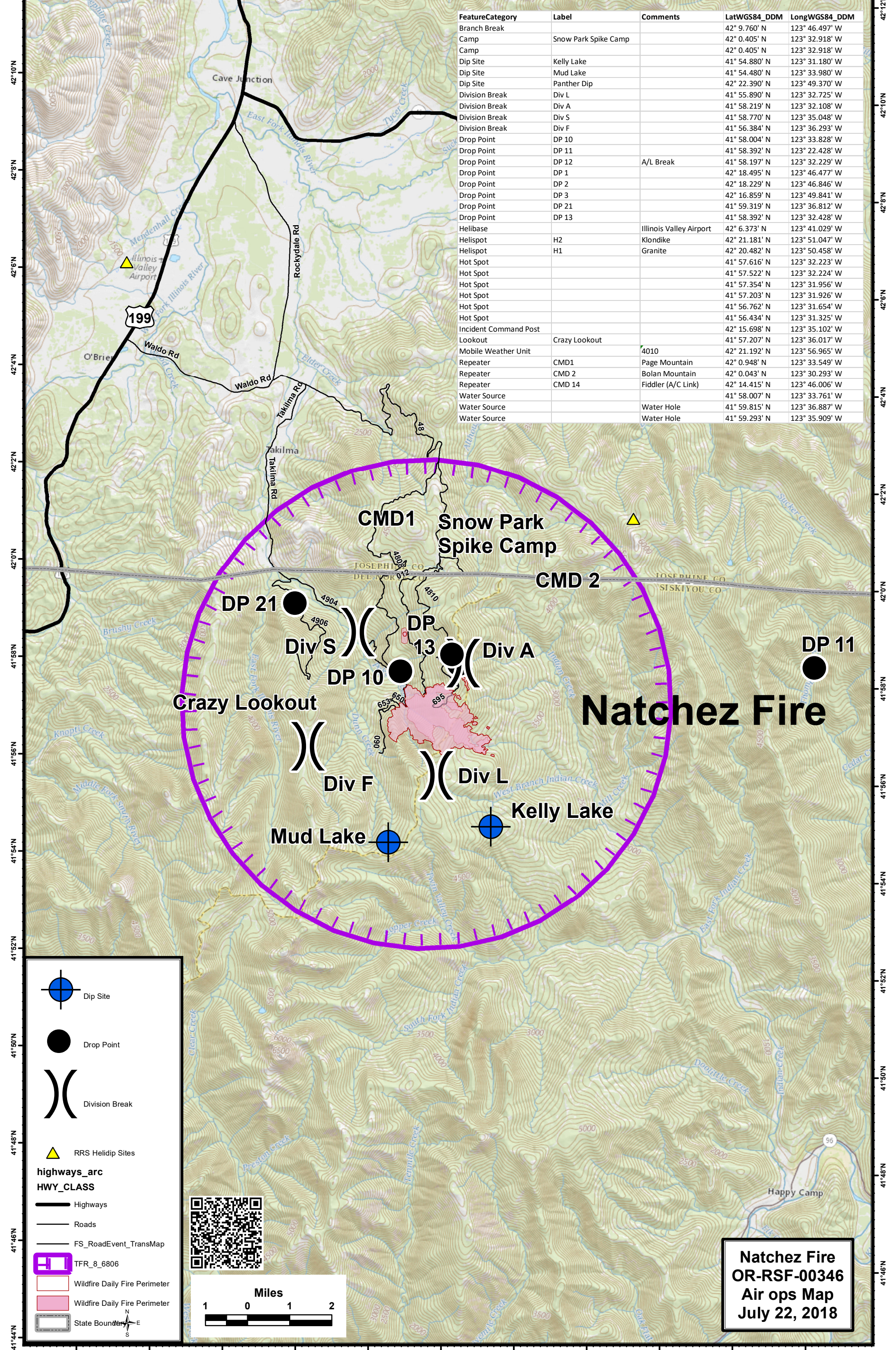


123°44'W 123°42'W 123°40'W 123°38'W 123°36'W 123°34'W 123°32'W 123°30'W 123°28'W 123°26'W 123°24'W 123°22'W



FeatureCategory	Label	Comments	LatWGS84_DDM	LongWGS84_DDM
Branch Break			42° 9.760' N	123° 46.497' W
Camp	Snow Park Spike Camp		42° 0.405' N	123° 32.918' W
Camp			42° 0.405' N	123° 32.918' W
Dip Site	Kelly Lake		41° 54.880' N	123° 31.180' W
Dip Site	Mud Lake		41° 54.480' N	123° 33.980' W
Dip Site	Panther Dip		42° 22.390' N	123° 49.370' W
Division Break	Div L		41° 55.890' N	123° 32.725' W
Division Break	Div A		41° 58.219' N	123° 32.108' W
Division Break	Div S		41° 58.770' N	123° 35.048' W
Division Break	Div F		41° 56.384' N	123° 36.293' W
Drop Point	DP 10		41° 58.004' N	123° 33.828' W
Drop Point	DP 11		41° 58.392' N	123° 22.428' W
Drop Point	DP 12	A/L Break	41° 58.197' N	123° 32.229' W
Drop Point	DP 1		42° 18.495' N	123° 46.477' W
Drop Point	DP 2		42° 18.229' N	123° 46.846' W
Drop Point	DP 3		42° 16.859' N	123° 49.841' W
Drop Point	DP 21		41° 59.319' N	123° 36.812' W
Drop Point	DP 13		41° 58.392' N	123° 32.428' W
Helibase		Illinois Valley Airport	42° 6.373' N	123° 41.029' W
Helispot	H2	Klondike	42° 21.181' N	123° 51.047' W
Helispot	H1	Granite	42° 20.482' N	123° 50.458' W
Hot Spot			41° 57.616' N	123° 32.223' W
Hot Spot			41° 57.522' N	123° 32.224' W
Hot Spot			41° 57.354' N	123° 31.956' W
Hot Spot			41° 57.203' N	123° 31.926' W
Hot Spot			41° 56.762' N	123° 31.654' W
Hot Spot			41° 56.434' N	123° 31.325' W
Incident Command Post			42° 15.698' N	123° 35.102' W
Lookout	Crazy Lookout		41° 57.207' N	123° 36.017' W
Mobile Weather Unit		4010	42° 21.192' N	123° 56.965' W
Repeater	CMD1	Page Mountain	42° 0.948' N	123° 33.549' W
Repeater	CMD 2	Bolan Mountain	42° 0.043' N	123° 30.293' W
Repeater	CMD 14	Fiddler (A/C Link)	42° 14.415' N	123° 46.006' W
Water Source			41° 58.007' N	123° 33.761' W
Water Source		Water Hole	41° 59.815' N	123° 36.887' W
Water Source		Water Hole	41° 59.293' N	123° 35.909' W

42°12'N 42°10'N 42°8'N 42°6'N 42°4'N 42°2'N 42°0'N 41°58'N 41°56'N 41°54'N 41°52'N 41°50'N 41°48'N 41°46'N 41°44'N

42°12'N 42°10'N 42°8'N 42°6'N 42°4'N 42°2'N 42°0'N 41°58'N 41°56'N 41°54'N 41°52'N 41°50'N 41°48'N 41°46'N

- Dip Site
- Drop Point
- Division Break
- RRS Helidip Sites
- highways_arc**
- HWY_CLASS**
- Highways
- Roads
- FS_RoadEvent_TransMap
- TFR_8_6806
- Wildfire Daily Fire Perimeter
- Wildfire Daily Fire Perimeter
- State Boundary

Miles

1 0 1 2

Natchez Fire
OR-RSF-00346
Air ops Map
July 22, 2018