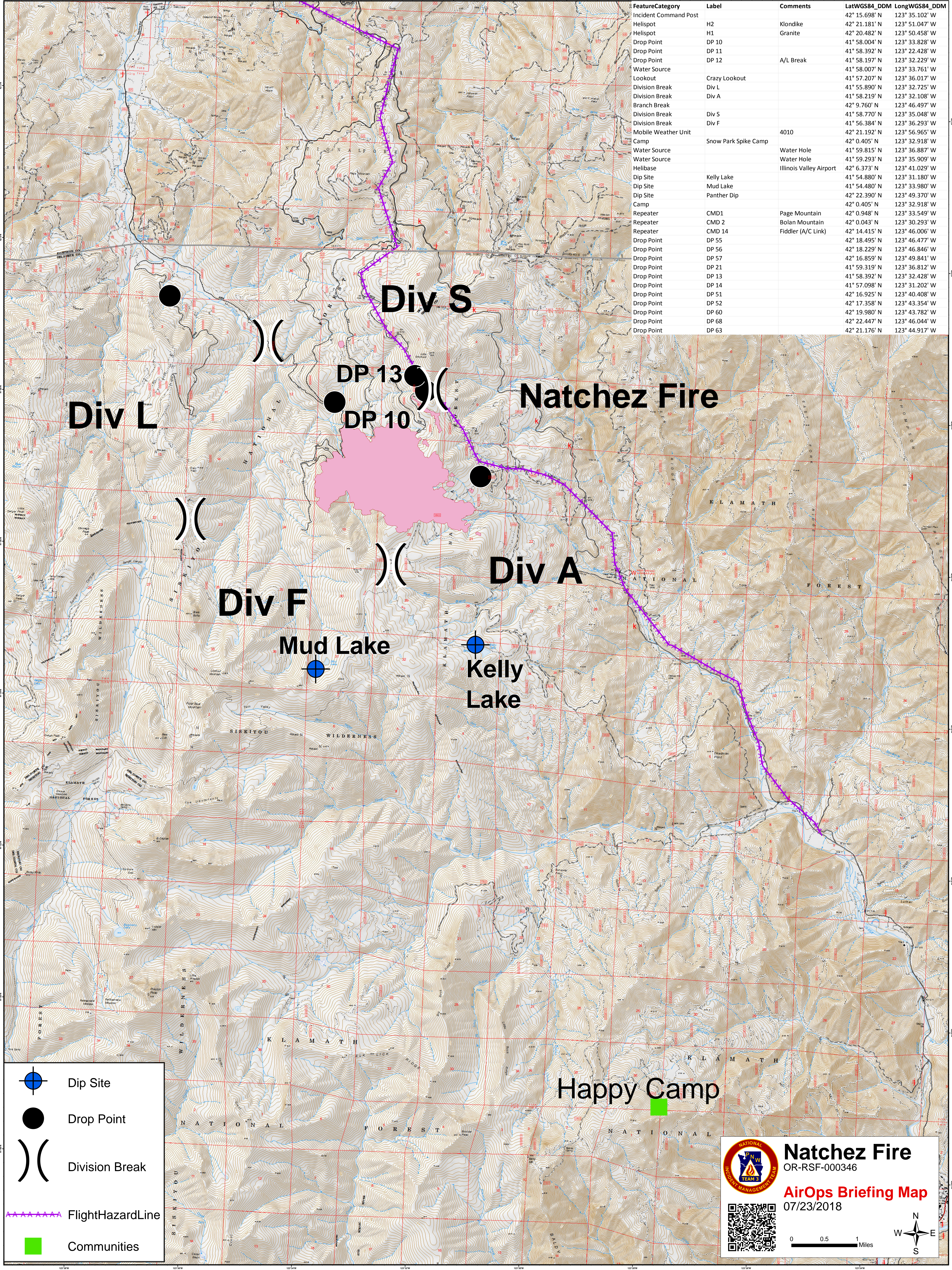


| FeatureCategory       | Label                | Comments                | LatWGS84_DDM  | LongWGS84_DDM  |
|-----------------------|----------------------|-------------------------|---------------|----------------|
| Incident Command Post |                      |                         | 42° 15.698' N | 123° 35.102' W |
| Helispot              | H2                   | Klondike                | 42° 21.181' N | 123° 51.047' W |
| Helispot              | H1                   | Granite                 | 42° 20.482' N | 123° 50.458' W |
| Drop Point            | DP 10                |                         | 41° 58.004' N | 123° 33.828' W |
| Drop Point            | DP 11                |                         | 41° 58.392' N | 123° 22.428' W |
| Drop Point            | DP 12                | A/L Break               | 41° 58.197' N | 123° 32.229' W |
| Water Source          |                      |                         | 41° 58.007' N | 123° 33.761' W |
| Lookout               | Crazy Lookout        |                         | 41° 57.207' N | 123° 36.017' W |
| Division Break        | Div L                |                         | 41° 55.890' N | 123° 32.725' W |
| Division Break        | Div A                |                         | 41° 58.219' N | 123° 32.108' W |
| Branch Break          |                      |                         | 42° 9.760' N  | 123° 46.497' W |
| Division Break        | Div S                |                         | 41° 58.770' N | 123° 35.048' W |
| Division Break        | Div F                |                         | 41° 56.384' N | 123° 36.293' W |
| Mobile Weather Unit   |                      | 4010                    | 42° 21.192' N | 123° 56.965' W |
| Camp                  | Snow Park Spike Camp |                         | 42° 0.405' N  | 123° 32.918' W |
| Water Source          |                      | Water Hole              | 41° 59.815' N | 123° 36.887' W |
| Water Source          |                      | Water Hole              | 41° 59.293' N | 123° 35.909' W |
| Helibase              |                      | Illinois Valley Airport | 42° 6.373' N  | 123° 41.029' W |
| Dip Site              | Kelly Lake           |                         | 41° 54.880' N | 123° 31.180' W |
| Dip Site              | Mud Lake             |                         | 41° 54.480' N | 123° 33.980' W |
| Dip Site              | Panther Dip          |                         | 42° 22.390' N | 123° 49.370' W |
| Camp                  |                      |                         | 42° 0.405' N  | 123° 32.918' W |
| Repeater              | CMD1                 | Page Mountain           | 42° 0.948' N  | 123° 33.549' W |
| Repeater              | CMD 2                | Bolan Mountain          | 42° 0.043' N  | 123° 30.293' W |
| Repeater              | CMD 14               | Fiddler (A/C Link)      | 42° 14.415' N | 123° 46.006' W |
| Drop Point            | DP 55                |                         | 42° 18.495' N | 123° 46.477' W |
| Drop Point            | DP 56                |                         | 42° 18.229' N | 123° 46.846' W |
| Drop Point            | DP 57                |                         | 42° 16.859' N | 123° 49.841' W |
| Drop Point            | DP 21                |                         | 41° 59.319' N | 123° 36.812' W |
| Drop Point            | DP 13                |                         | 41° 58.392' N | 123° 32.428' W |
| Drop Point            | DP 14                |                         | 41° 57.098' N | 123° 31.202' W |
| Drop Point            | DP 51                |                         | 42° 16.925' N | 123° 40.408' W |
| Drop Point            | DP 52                |                         | 42° 17.358' N | 123° 43.354' W |
| Drop Point            | DP 60                |                         | 42° 19.980' N | 123° 43.782' W |
| Drop Point            | DP 68                |                         | 42° 22.447' N | 123° 46.044' W |
| Drop Point            | DP 63                |                         | 42° 21.176' N | 123° 44.917' W |



Div L

Div S

Natchez Fire

DP 13

DP 10

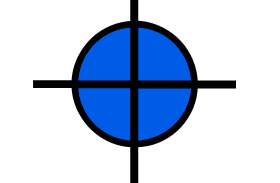
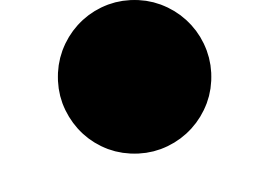
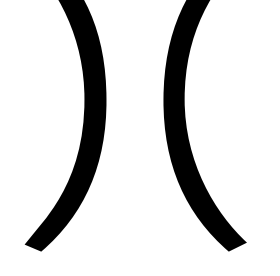

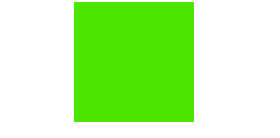
Div F


Div A

Mud Lake

Kelly Lake

Happy Camp

-  Dip Site
-  Drop Point
-  Division Break
-  FlightHazardLine
-  Communities



**Natchez Fire**  
OR-RSF-000346

**AirOps Briefing Map**  
07/23/2018

