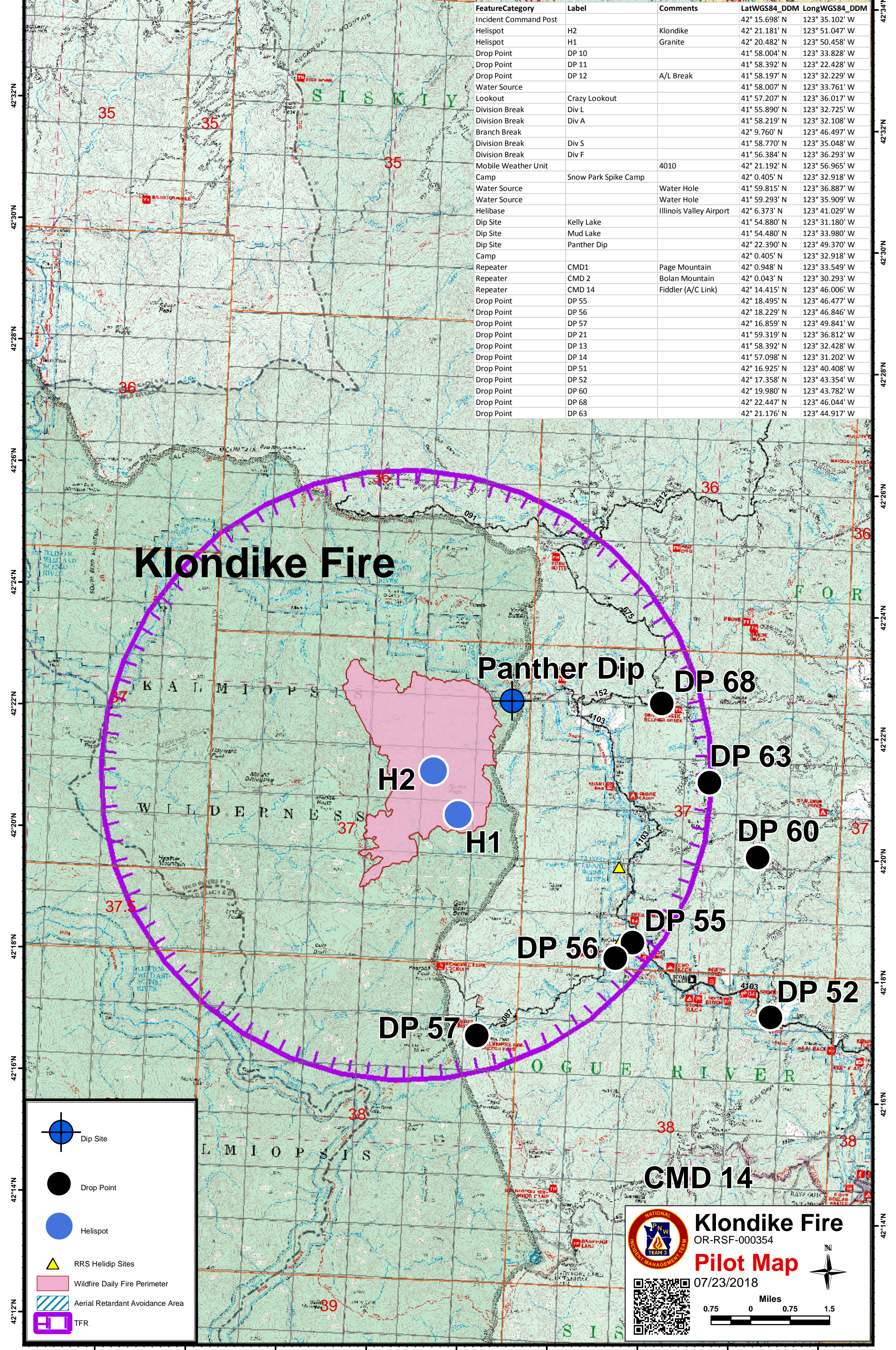


124°0'W 123°58'W 123°56'W 123°54'W 123°52'W 123°50'W 123°48'W 123°46'W 123°44'W



FeatureCategory	Label	Comments	LatWGS84_DDM	LongWGS84_DDM
Incident Command Post			42° 15.698' N	123° 35.102' W
Helispot	H2	Klondike	42° 21.181' N	123° 51.047' W
Helispot	H1	Granite	42° 20.482' N	123° 50.458' W
Drop Point	DP 10		41° 58.004' N	123° 33.828' W
Drop Point	DP 11		41° 58.392' N	123° 22.428' W
Drop Point	DP 12	A/L Break	41° 58.197' N	123° 32.229' W
Water Source			41° 58.007' N	123° 33.761' W
Lookout	Crazy Lookout		41° 57.207' N	123° 36.017' W
Division Break	Div L		41° 55.890' N	123° 32.725' W
Division Break	Div A		41° 58.219' N	123° 32.108' W
Branch Break			42° 9.760' N	123° 46.497' W
Division Break	Div S		41° 58.770' N	123° 35.048' W
Division Break	Div F		41° 56.384' N	123° 36.293' W
Mobile Weather Unit		4010	42° 21.192' N	123° 56.965' W
Camp	Snow Park Spike Camp		42° 0.405' N	123° 32.918' W
Water Source		Water Hole	41° 59.815' N	123° 36.887' W
Water Source		Water Hole	41° 59.293' N	123° 35.909' W
Helibase		Illinois Valley Airport	42° 6.373' N	123° 41.029' W
Dip Site	Kelly Lake		41° 54.880' N	123° 31.180' W
Dip Site	Mud Lake		41° 54.480' N	123° 33.980' W
Dip Site	Panther Dip		42° 22.390' N	123° 49.370' W
Camp			42° 0.405' N	123° 32.918' W
Repeater	CMD1	Page Mountain	42° 0.948' N	123° 33.549' W
Repeater	CMD 2	Bolan Mountain	42° 0.043' N	123° 30.293' W
Repeater	CMD 14	Fiddler (A/C Link)	42° 14.415' N	123° 46.006' W
Drop Point	DP 55		42° 18.495' N	123° 46.477' W
Drop Point	DP 56		42° 18.229' N	123° 46.846' W
Drop Point	DP 57		42° 16.859' N	123° 49.841' W
Drop Point	DP 21		41° 59.319' N	123° 36.812' W
Drop Point	DP 13		41° 58.392' N	123° 32.428' W
Drop Point	DP 14		41° 57.098' N	123° 31.202' W
Drop Point	DP 51		42° 16.925' N	123° 40.408' W
Drop Point	DP 52		42° 17.358' N	123° 43.354' W
Drop Point	DP 60		42° 19.980' N	123° 43.782' W
Drop Point	DP 68		42° 22.447' N	123° 46.044' W
Drop Point	DP 63		42° 21.176' N	123° 44.917' W

# Klondike Fire

Panther Dip

DP 68

H2

DP 63

H1

DP 60

DP 56

DP 55

DP 57

DP 52

CMD 14

- Dip Site
- Drop Point
- Helispot
- RRS Helidip Sites
- Wildfire Daily Fire Perimeter
- Aerial Retardant Avoidance Area
- TFR

## Klondike Fire

OR-RSF-000354

### Pilot Map

07/23/2018

Miles

0.75 0 0.75 1.5

123°58'W 123°56'W 123°54'W 123°52'W 123°50'W 123°48'W 123°46'W 123°44'W