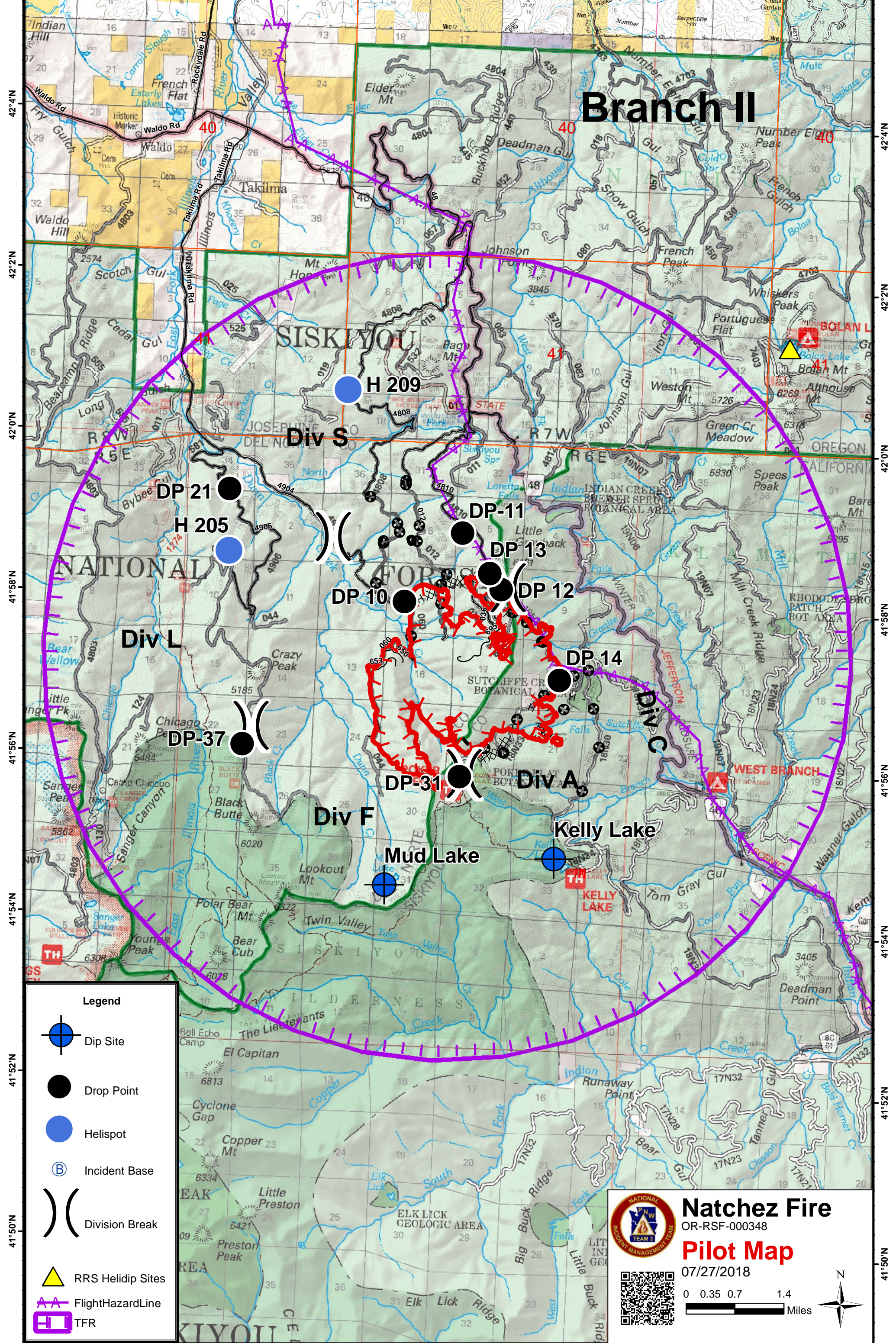
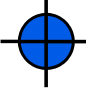






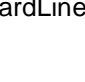


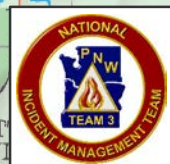
123°40'W 123°38'W 123°36'W 123°34'W 123°32'W 123°30'W 123°28'W



Branch II

Legend

-  Dip Site
-  Drop Point
-  Helispot
-  Incident Base
-  Division Break
-  RRS Helidip Sites
-  Flight Hazard Line
-  TFR



Natchez Fire
 OR-RSF-000348
Pilot Map

07/27/2018



0 0.35 0.7 1.4
 Miles



123°38'W 123°36'W 123°34'W 123°32'W 123°30'W 123°28'W 123°26'W

FeatureCategory	Label	LatWGS84_DDM	LongWGS84_DDM	Comments
Camp		42° 0.405' N	123° 32.918' W	Snow Park Spike Camp
Camp		42° 0.405' N	123° 32.918' W	
Dip Site	Kelly Lake	41° 54.880' N	123° 31.180' W	
Dip Site	Mud Lake	41° 54.480' N	123° 33.980' W	
Dip Site	Panther Dip	42° 22.390' N	123° 49.370' W	
Drop Point	DP 10	41° 58.004' N	123° 33.828' W	
Drop Point	GRAVEL 11	41° 58.392' N	123° 22.428' W	
Drop Point	DP 12	41° 58.197' N	123° 32.229' W	A/L Break
Drop Point	DP 55	42° 18.495' N	123° 46.477' W	
Drop Point	DP 56	42° 18.229' N	123° 46.846' W	
Drop Point	DP 57	42° 16.859' N	123° 49.841' W	
Drop Point	DP 21	41° 59.319' N	123° 36.812' W	
Drop Point	DP 13	41° 58.392' N	123° 32.428' W	
Drop Point	DP 14	41° 57.098' N	123° 31.202' W	
Drop Point	DP 51	42° 16.925' N	123° 40.408' W	
Drop Point	DP 52	42° 17.358' N	123° 43.354' W	
Drop Point	DP 60	42° 19.980' N	123° 43.782' W	
Drop Point	DP 68	42° 22.447' N	123° 46.044' W	
Drop Point	DP 63	42° 21.176' N	123° 44.917' W	
Drop Point	DP-37	41° 56.158' N	123° 36.434' W	
Drop Point	DP-31	41 55.856	123 32.802	
Drop Point	DP-11	41° 58.879' N	123° 32.907' W	
Drop Point	DP-70	42° 25.323' N	123° 47.509' W	
Drop Point	DP-49	42° 16.759' N	123° 36.958' W	
Helibase		42° 6.373' N	123° 41.029' W	Illinois Valley Airport
Helispot	H2	42° 21.181' N	123° 51.047' W	Klondike
Helispot	H1	42° 20.482' N	123° 50.458' W	Granite
Helispot	H 209	42° 0.607' N	123° 34.901' W	1 way Type 2
Helispot	H 205	41° 58.553' N	123° 36.781' W	
Helispot	H 103	42 18.224	123 47.039	Miami Beach
Helispot	H 104	42° 18.224' N	123° 46.849' W	Type 2
Helispot	H-135	42° 24.902' N	123° 48.462' W	
Helispot	H-137	42° 25.823' N	123° 44.208' W	
Incident Command Post		42° 15.698' N	123° 35.102' W	
Mobile Weather Unit		42° 21.192' N	123° 56.965' W	4010
Mobile Weather Unit	IRAWS 47	42° 13.878' N	123° 47.680' W	
Repeater	CMD1	42° 0.948' N	123° 33.549' W	Page Mountain
Repeater	CMD 2	42° 0.043' N	123° 30.293' W	Bolan Mountain
Repeater	CMD 14	42° 14.415' N	123° 46.006' W	Fiddler (A/C Link)
Water Source		41° 58.007' N	123° 33.761' W	
Water Source		41° 59.815' N	123° 36.887' W	Water Hole
Water Source		41° 59.293' N	123° 35.909' W	Water Hole