

Klondike and Natchez Fires

OR-RSF-000354; OR-RSF-000346

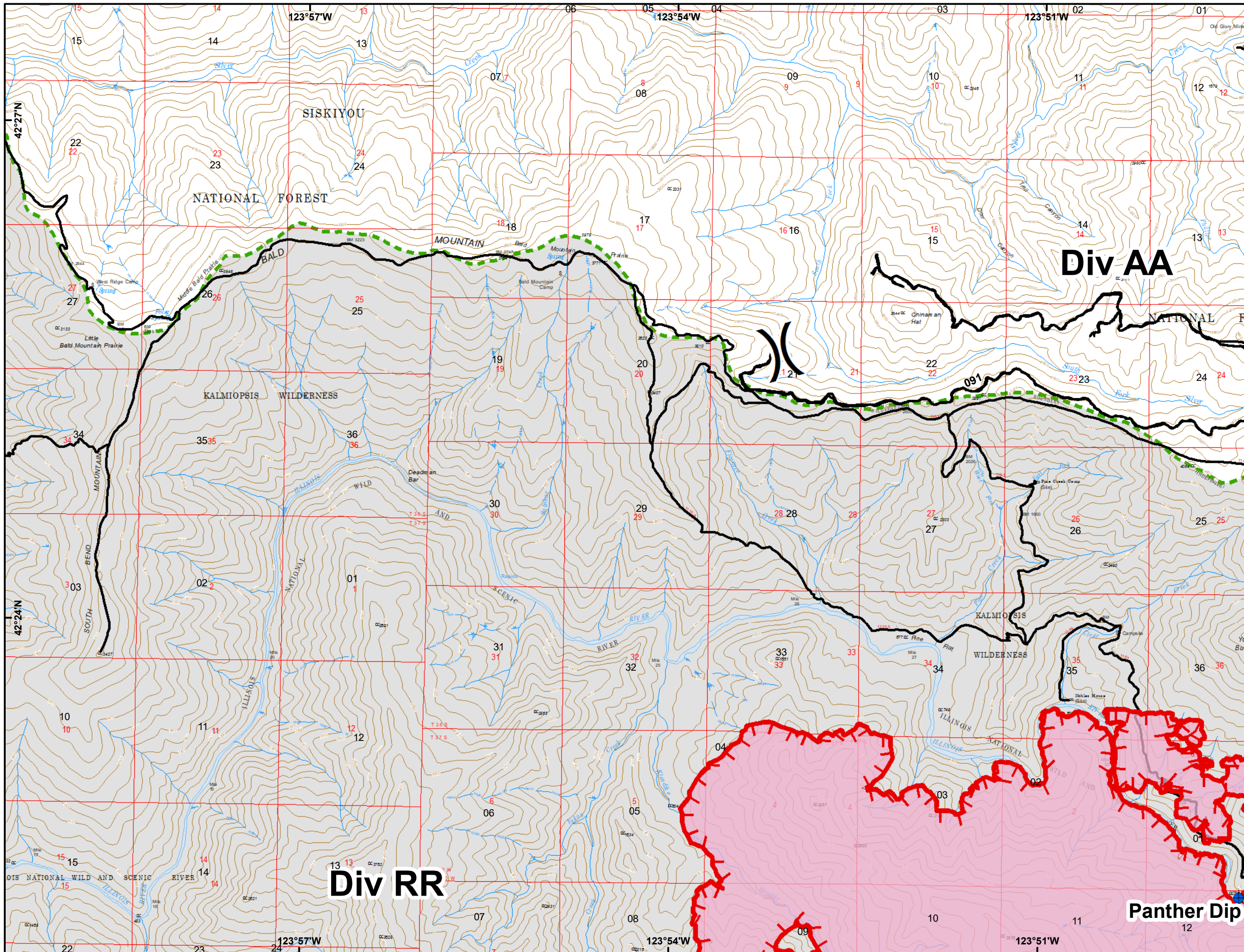
IAP Map

07/27/2018

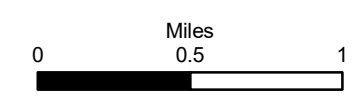
IR Perimeter - 07/25/2018 @ 2254

Klondike 7,253 acres

Natchez 2,738 acres



- Roads
- Stream
- ⊕ Dip Site
- ⌋ Division Break
- ▬ Uncontrolled Fire Edge
- Wildfire Daily Fire Perimeter
- ▬ Wilderness



Klondike and Natchez Fires

OR-RSF-000354; OR-RSF-000346

IAP Map

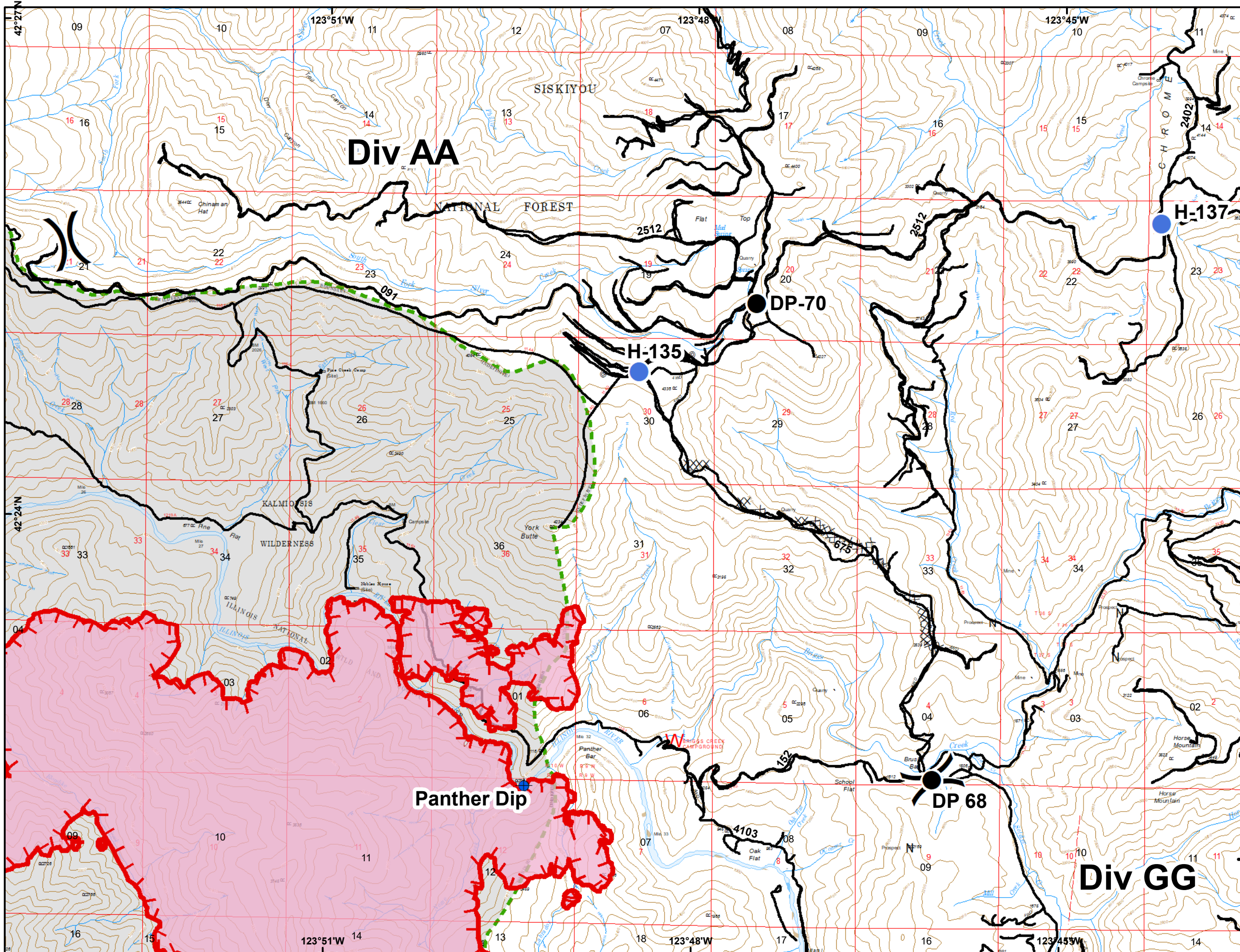
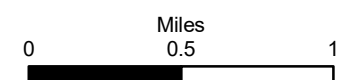
07/27/2018

IR Perimeter - 07/25/2018 @ 2254

Klondike 7,253 acres

Natchez 2,738 acres

- Roads
- Stream
- ⊕ Dip Site
- Drop Point
- Helispot
-) (Division Break
- ▬ Uncontrolled Fire Edge
- XXXX Completed Dozer Line
- ▭ Wildfire Daily Fire Perimeter
- ▬ Wilderness



Klondike and Natchez Fires

OR-RSF-000354; OR-RSF-000346

IAP Map

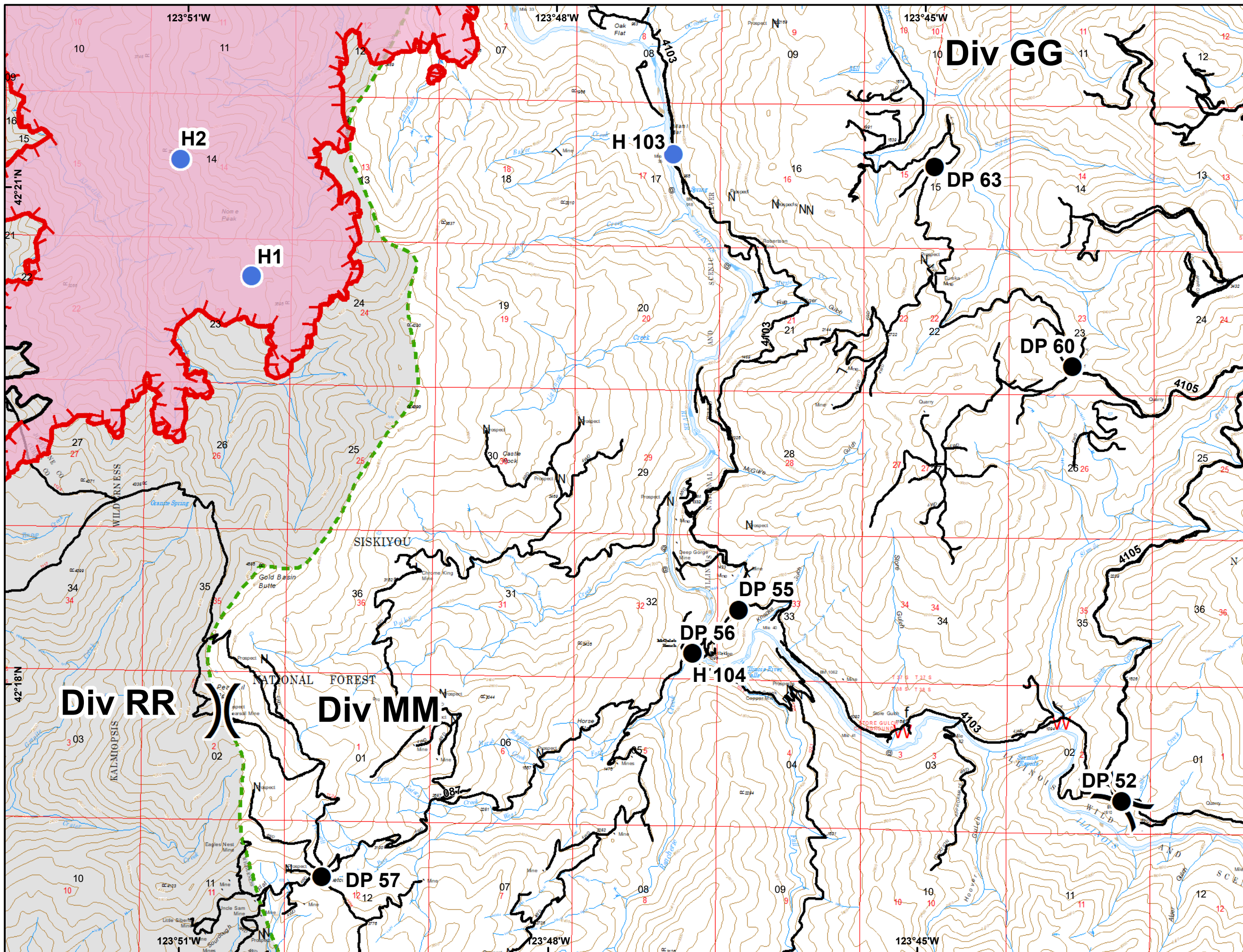
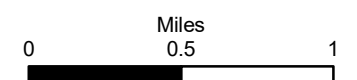
07/27/2018

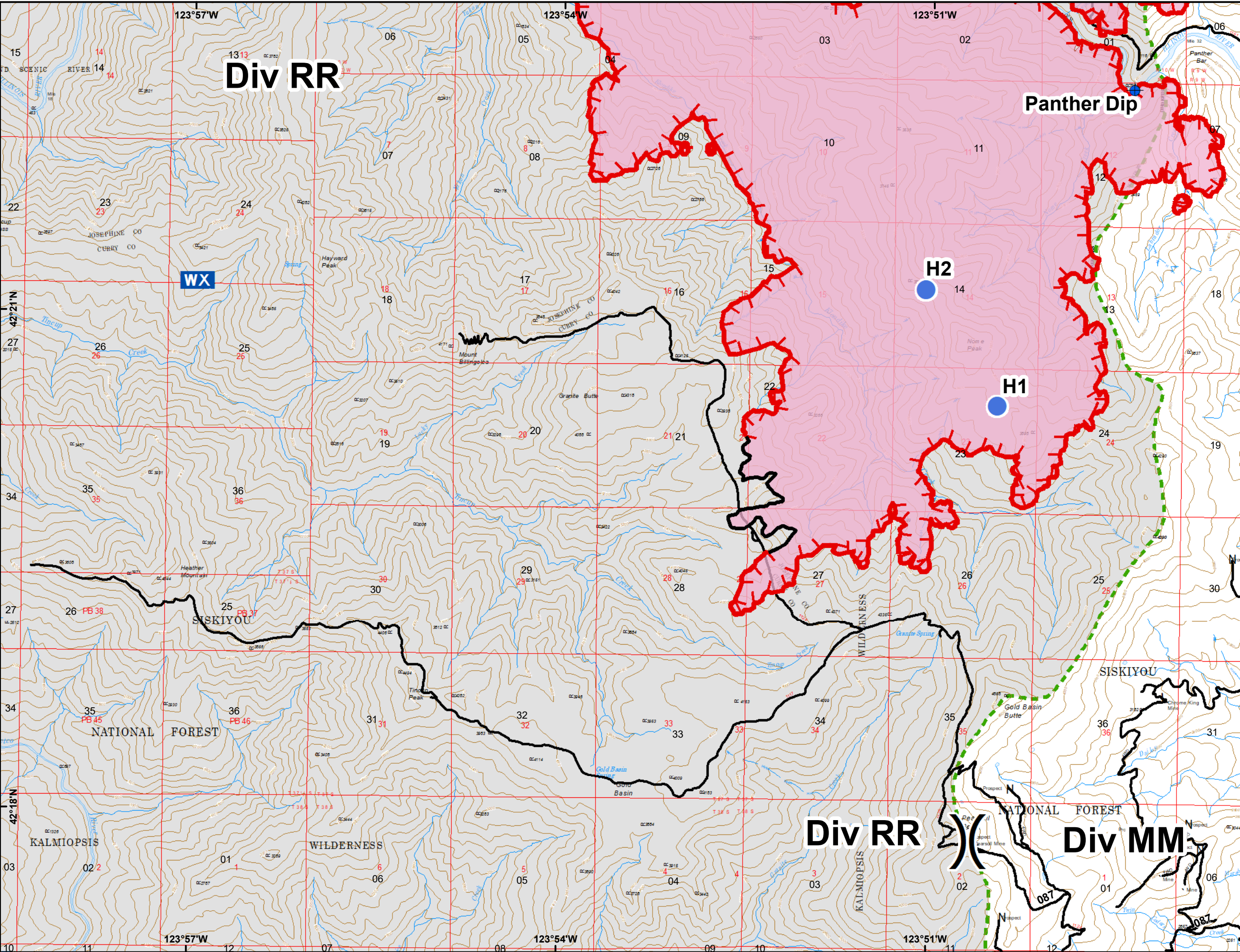
IR Perimeter - 07/25/2018 @ 2254

Klondike 7,253 acres

Natchez 2,738 acres

- Roads
- Stream
- Drop Point
- Helispot
-) (Division Break
- ▬ Uncontrolled Fire Edge
- ▬ Completed Line
- ▭ Wildfire Daily Fire Perimeter
- ▭ Wilderness





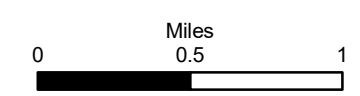
Klondike and Natchez Fires

OR-RSF-000354; OR-RSF-000346

IAP Map

07/27/2018
 IR Perimeter - 07/25/2018 @ 2254
 Klondike 7,253 acres
 Natchez 2,738 acres

- Roads
- Stream
- Dip Site
- Helispot
- Mobile Weather Unit
- Division Break
- Uncontrolled Fire Edge
- Completed Line
- Wildfire Daily Fire Perimeter
- Wilderness



Klondike and Natchez Fires

OR-RSF-000354; OR-RSF-000346

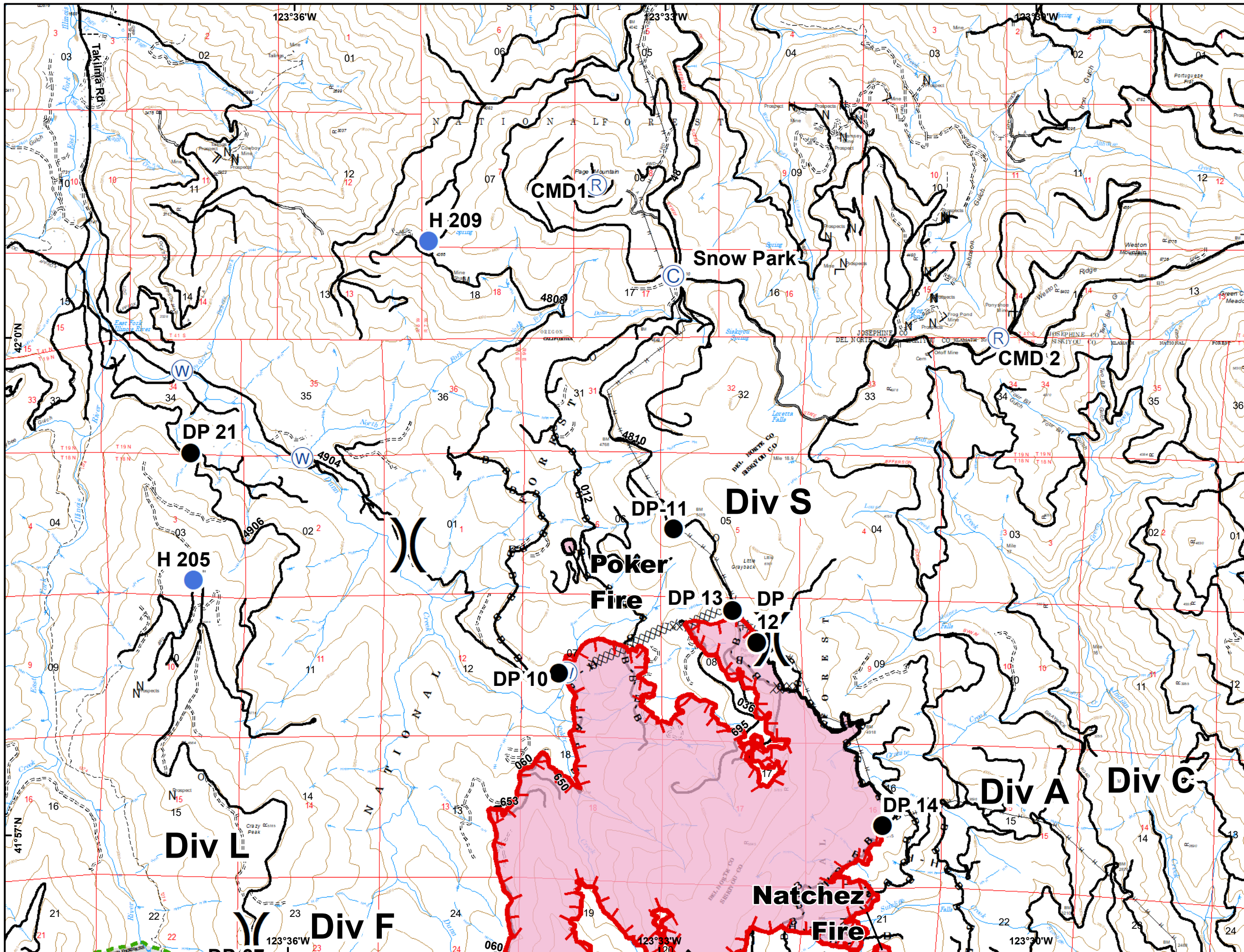
IAP Map

07/27/2018

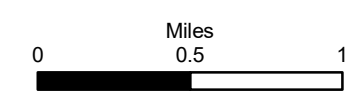
IR Perimeter - 07/25/2018 @ 2254

Klondike 7,253 acres

Natchez 2,738 acres



- Roads
- Stream
- Ⓒ Camp
- Drop Point
- Helispot
- Ⓙ Repeater
- Ⓜ Water Source
- ⌋ Division Break
- ▬ Uncontrolled Fire Edge
- Completed Line
- ⊗ Completed Dozer Line
- H - Completed Hand Line
- R - Road as Completed Line
- ▬ Planned Fire Line
- B - Brushed Road
- ◻ Wildfir Perimeter
- Roads
- ▬ Wilder



Klondike and Natchez Fires

OR-RSF-000354; OR-RSF-000346

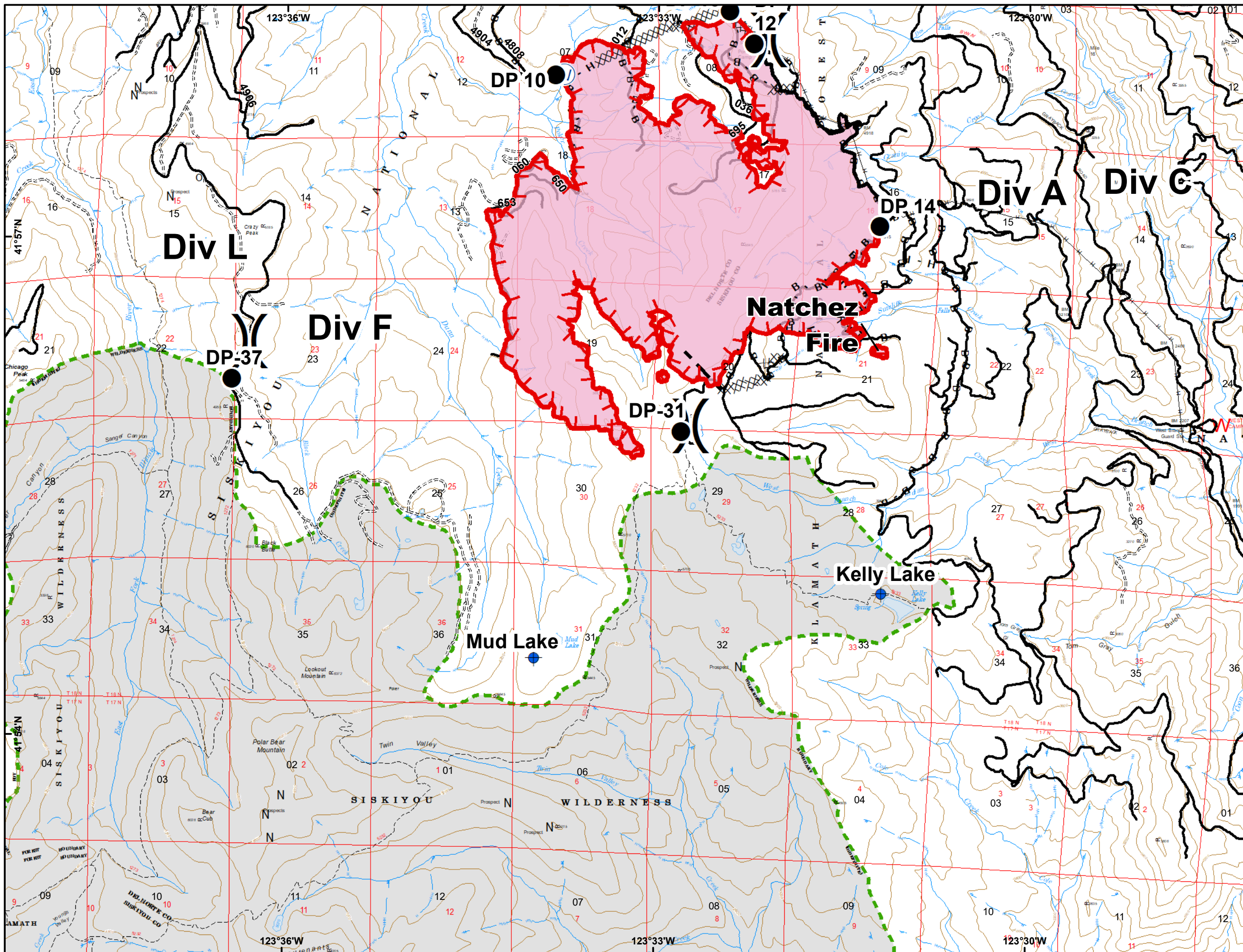
IAP Map

07/27/2018

IR Perimeter - 07/25/2018 @ 2254

Klondike 7,253 acres

Natchez 2,738 acres



- Roads
- Stream
- Dip Site
- Drop Point
- Water Source
- Division Break
- Uncontrolled Fire Edge
- Completed Line
- Completed Dozer Line
- Completed Hand Line
- Road as Completed Line
- Planned Fire Line
- Brushed Road
- Wildfire Daily Fire Perimeter
- Wilderness

