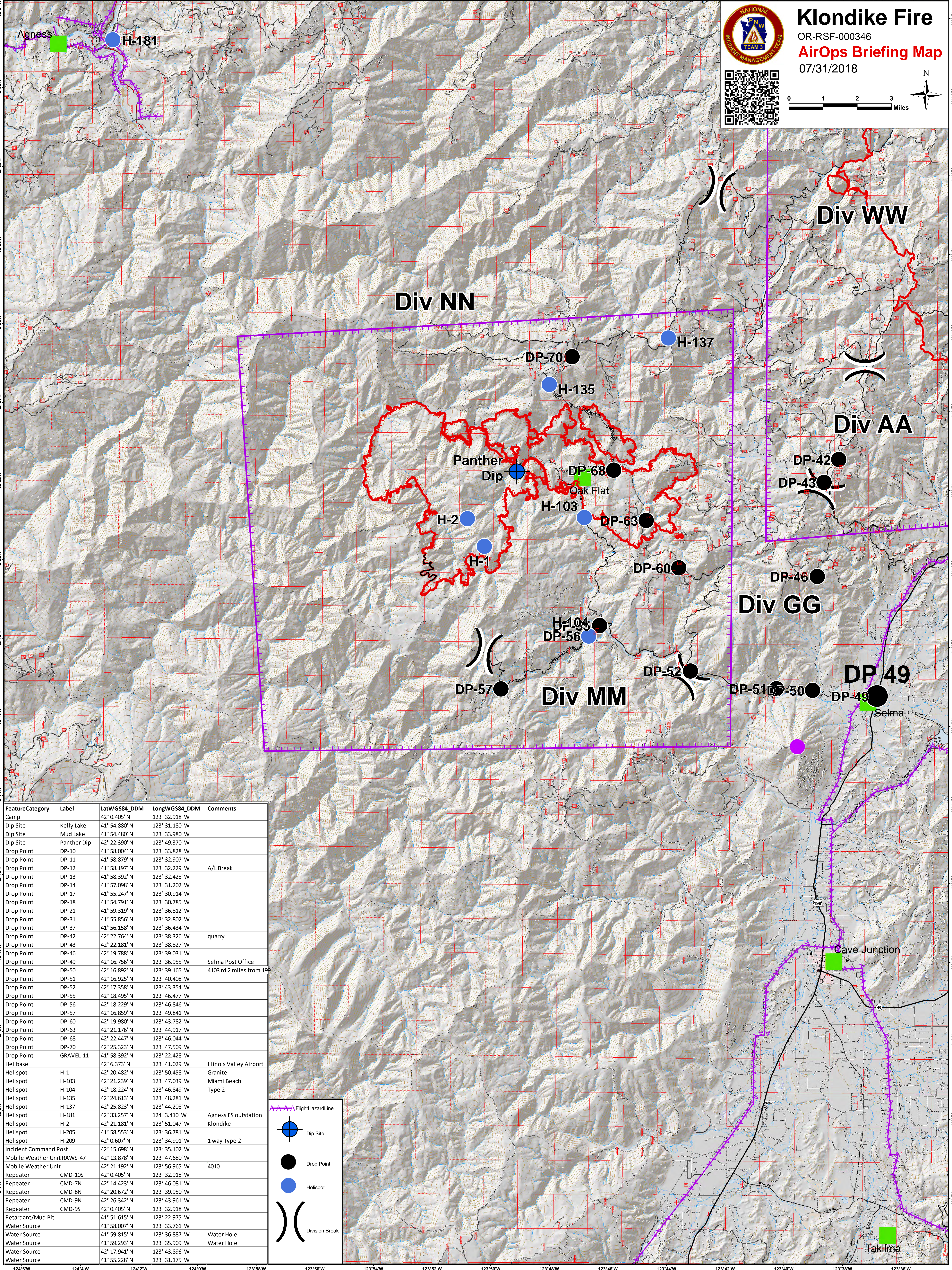
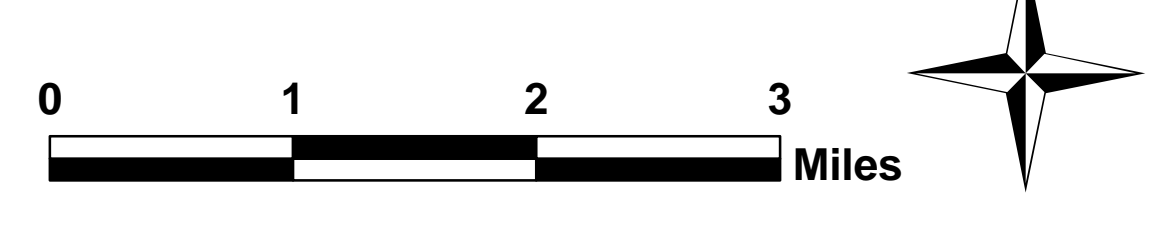




Klondike Fire

OR-RSF-000346
AirOps Briefing Map
 07/31/2018



| FeatureCategory | Label | LatWGS84_DDM | LongWGS84_DDM | Comments |
|-----------------------|-------------|---------------|----------------|--------------------------|
| Camp | | 42° 0.405' N | 123° 32.918' W | |
| Dip Site | Kelly Lake | 41° 54.880' N | 123° 31.180' W | |
| Dip Site | Mud Lake | 41° 54.480' N | 123° 33.980' W | |
| Dip Site | Panther Dip | 42° 22.390' N | 123° 49.370' W | |
| Drop Point | DP-10 | 41° 58.004' N | 123° 33.828' W | |
| Drop Point | DP-11 | 41° 58.879' N | 123° 32.907' W | |
| Drop Point | DP-12 | 41° 58.197' N | 123° 32.229' W | A/L Break |
| Drop Point | DP-13 | 41° 58.392' N | 123° 32.428' W | |
| Drop Point | DP-14 | 41° 57.098' N | 123° 31.202' W | |
| Drop Point | DP-17 | 41° 55.247' N | 123° 30.914' W | |
| Drop Point | DP-18 | 41° 54.791' N | 123° 30.785' W | |
| Drop Point | DP-21 | 41° 59.319' N | 123° 36.812' W | |
| Drop Point | DP-31 | 41° 55.856' N | 123° 32.802' W | |
| Drop Point | DP-37 | 41° 56.158' N | 123° 36.434' W | |
| Drop Point | DP-42 | 42° 22.764' N | 123° 38.326' W | quarry |
| Drop Point | DP-43 | 42° 22.181' N | 123° 38.827' W | |
| Drop Point | DP-46 | 42° 19.788' N | 123° 39.031' W | |
| Drop Point | DP-49 | 42° 16.758' N | 123° 36.955' W | Selma Post Office |
| Drop Point | DP-50 | 42° 16.892' N | 123° 39.165' W | 4103 rd 2 miles from 199 |
| Drop Point | DP-51 | 42° 16.925' N | 123° 40.408' W | |
| Drop Point | DP-52 | 42° 17.358' N | 123° 43.354' W | |
| Drop Point | DP-55 | 42° 18.495' N | 123° 46.477' W | |
| Drop Point | DP-56 | 42° 18.229' N | 123° 46.846' W | |
| Drop Point | DP-57 | 42° 16.859' N | 123° 49.841' W | |
| Drop Point | DP-60 | 42° 19.980' N | 123° 43.782' W | |
| Drop Point | DP-63 | 42° 21.176' N | 123° 44.917' W | |
| Drop Point | DP-68 | 42° 22.447' N | 123° 46.044' W | |
| Drop Point | DP-70 | 42° 25.323' N | 123° 47.509' W | |
| Drop Point | GRAVEL-11 | 41° 58.392' N | 123° 22.428' W | |
| Helibase | | 42° 6.373' N | 123° 41.029' W | Illinois Valley Airport |
| Helispot | H-1 | 42° 20.482' N | 123° 50.458' W | Granite |
| Helispot | H-103 | 42° 21.239' N | 123° 47.039' W | Miami Beach |
| Helispot | H-104 | 42° 18.224' N | 123° 46.849' W | Type 2 |
| Helispot | H-135 | 42° 24.613' N | 123° 48.281' W | |
| Helispot | H-137 | 42° 25.823' N | 123° 44.208' W | |
| Helispot | H-181 | 42° 33.257' N | 124° 3.410' W | Agness FS outstation |
| Helispot | H-2 | 42° 21.181' N | 123° 51.047' W | Klondike |
| Helispot | H-205 | 41° 58.553' N | 123° 36.781' W | |
| Helispot | H-209 | 42° 0.607' N | 123° 34.901' W | 1 way Type 2 |
| Incident Command Post | | 42° 15.698' N | 123° 35.102' W | |
| Mobile Weather Unit | RAWS-47 | 42° 13.878' N | 123° 47.680' W | |
| Mobile Weather Unit | | 42° 21.192' N | 123° 56.965' W | 4010 |
| Repeater | CMD-10S | 42° 0.405' N | 123° 32.918' W | |
| Repeater | CMD-7N | 42° 14.423' N | 123° 46.081' W | |
| Repeater | CMD-8N | 42° 20.672' N | 123° 39.950' W | |
| Repeater | CMD-9N | 42° 26.342' N | 123° 43.961' W | |
| Repeater | CMD-9S | 42° 0.405' N | 123° 32.918' W | |
| Retardant/Mud Pit | | 41° 51.615' N | 123° 22.975' W | |
| Water Source | | 41° 58.007' N | 123° 33.761' W | |
| Water Source | | 41° 59.815' N | 123° 36.887' W | Water Hole |
| Water Source | | 41° 59.293' N | 123° 35.909' W | Water Hole |
| Water Source | | 42° 17.941' N | 123° 43.896' W | |
| Water Source | | 41° 55.228' N | 123° 31.175' W | |

Flight Hazard Line
 Dip Site
 Drop Point
 Helispot
 Division Break