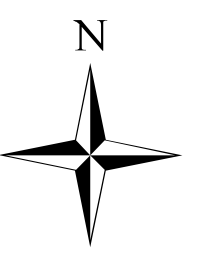


Natchez Fire

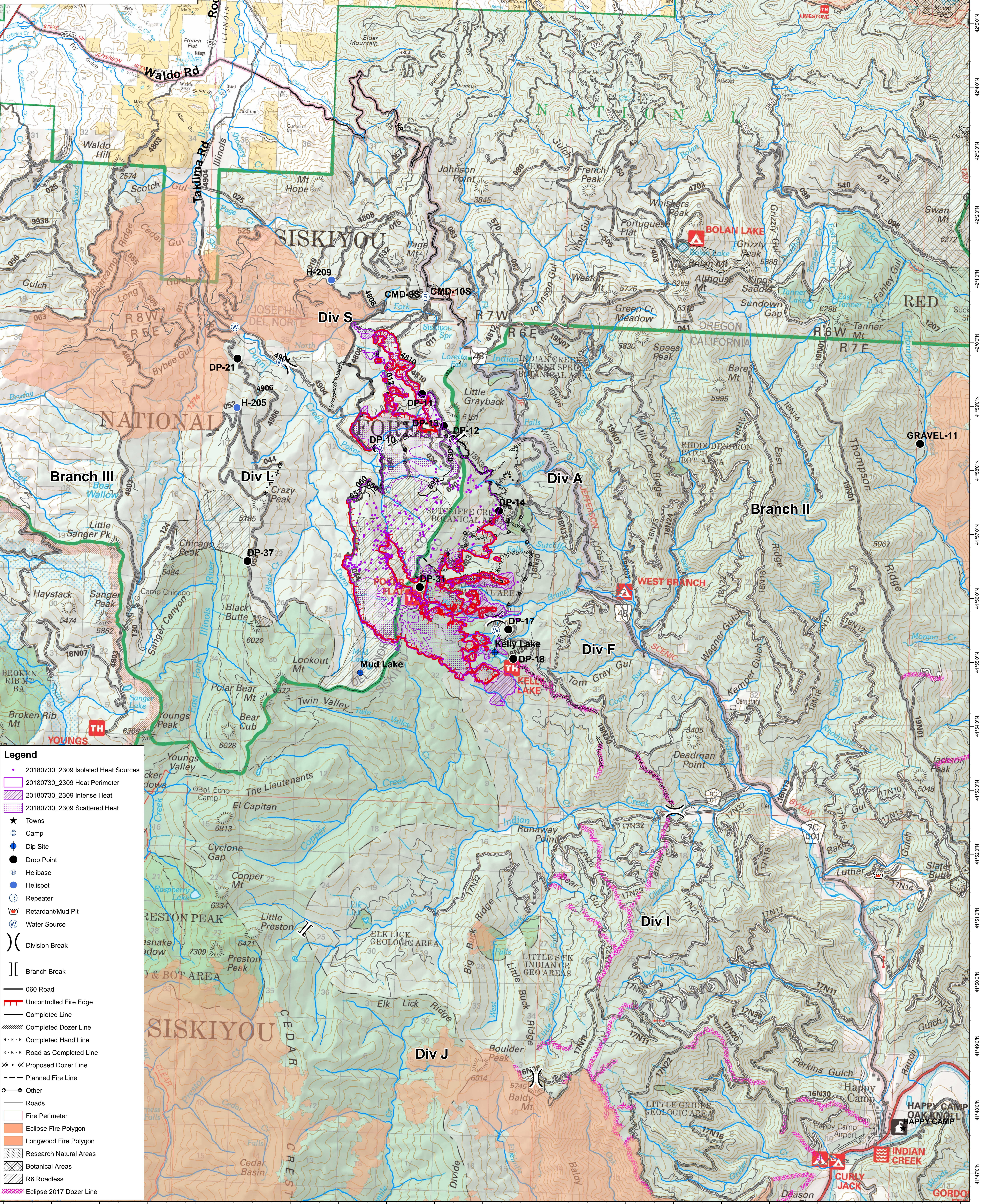
OR-RSF-000348

Operations IR Map

07/31/2018
Branch II and III
IR Perimeter
07/30/2018 @ 2309
6,174 acres



0 0.5 1 2 Miles



- Legend**
- 20180730_2309 Isolated Heat Sources
 - 20180730_2309 Heat Perimeter
 - 20180730_2309 Intense Heat
 - 20180730_2309 Scattered Heat
 - ★ Towns
 - ⊙ Camp
 - ⊙ Dip Site
 - Drop Point
 - ⊕ Helibase
 - ⊕ Helispot
 - ⊕ Repeater
 - ⊕ Retardant/Mud Pit
 - ⊕ Water Source
 - ⊕ Division Break
 - ⊕ Branch Break
 - 060 Road
 - Uncontrolled Fire Edge
 - Completed Line
 - Completed Dozer Line
 - Completed Hand Line
 - Road as Completed Line
 - Proposed Dozer Line
 - Planned Fire Line
 - Other
 - Roads
 - Fire Perimeter
 - Eclipse Fire Polygon
 - Longwood Fire Polygon
 - Research Natural Areas
 - Botanical Areas
 - R6 Roadless
 - Eclipse 2017 Dozer Line