

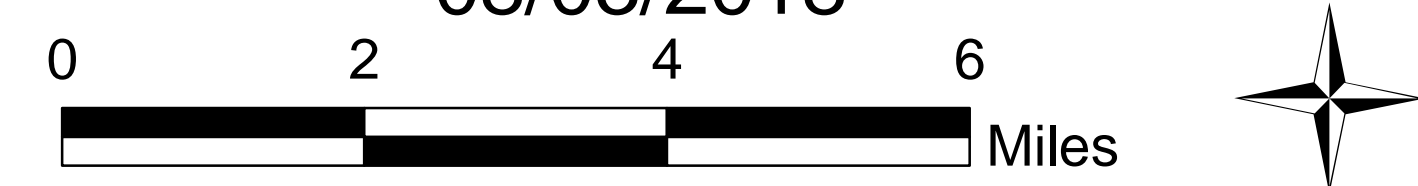


Natchez and Klondike Fires

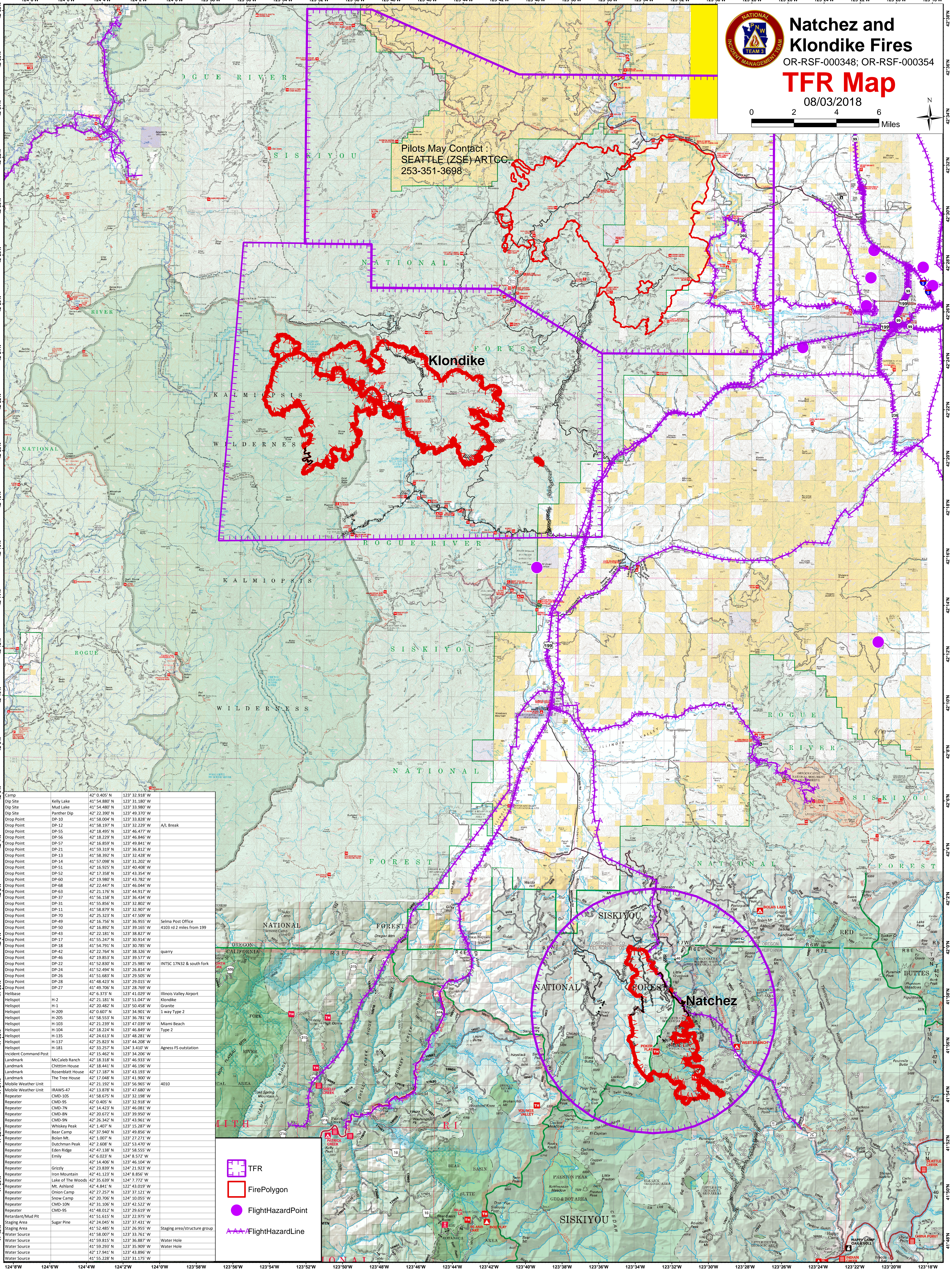
OR-RSF-000348; OR-RSF-000354

TFR Map

08/03/2018



Pilots May Contact :
SEATTLE (ZSE) ARTCC
253-351-3698



Camp	Kelly Lake	42° 0.405' N	123° 32.918' W
Dip Site	Mud Lake	41° 54.480' N	123° 33.980' W
Dip Site	Panther Dip	42° 22.390' N	123° 49.370' W
Drop Point	DP-10	41° 58.004' N	123° 33.828' W
Drop Point	DP-12	41° 58.197' N	123° 32.229' W
Drop Point	DP-55	42° 18.495' N	123° 46.477' W
Drop Point	DP-56	42° 18.229' N	123° 46.848' W
Drop Point	DP-57	42° 16.859' N	123° 49.841' W
Drop Point	DP-21	41° 59.319' N	123° 36.812' W
Drop Point	DP-13	41° 58.392' N	123° 32.428' W
Drop Point	DP-14	41° 57.098' N	123° 31.202' W
Drop Point	DP-51	42° 16.925' N	123° 40.408' W
Drop Point	DP-52	42° 17.358' N	123° 43.354' W
Drop Point	DP-60	42° 19.980' N	123° 43.782' W
Drop Point	DP-68	42° 22.447' N	123° 46.044' W
Drop Point	DP-63	42° 21.176' N	123° 44.917' W
Drop Point	DP-37	41° 56.158' N	123° 36.434' W
Drop Point	DP-31	41° 55.856' N	123° 32.802' W
Drop Point	DP-11	41° 58.879' N	123° 32.900' W
Drop Point	DP-70	42° 22.823' N	123° 47.509' W
Drop Point	DP-49	42° 16.756' N	123° 36.955' W
Drop Point	DP-50	42° 16.892' N	123° 39.165' W
Drop Point	DP-43	42° 22.181' N	123° 38.827' W
Drop Point	DP-17	41° 55.247' N	123° 30.914' W
Drop Point	DP-18	41° 54.791' N	123° 30.785' W
Drop Point	DP-42	42° 22.764' N	123° 38.326' W
Drop Point	DP-46	42° 19.853' N	123° 39.577' W
Drop Point	DP-22	41° 52.830' N	123° 25.983' W
Drop Point	DP-24	41° 52.494' N	123° 26.814' W
Drop Point	DP-26	41° 51.683' N	123° 29.505' W
Drop Point	DP-28	41° 48.423' N	123° 29.015' W
Drop Point	DP-27	41° 49.706' N	123° 28.769' W
Helibase		42° 6.373' N	123° 41.029' W
Helispot	H-2	42° 21.181' N	123° 51.047' W
Helispot	H-1	42° 20.482' N	123° 50.458' W
Helispot	H-209	42° 0.607' N	123° 34.901' W
Helispot	H-205	41° 58.553' N	123° 36.781' W
Helispot	H-103	42° 21.239' N	123° 42.039' W
Helispot	H-104	42° 18.224' N	123° 46.849' W
Helispot	H-135	42° 24.613' N	123° 48.281' W
Helispot	H-137	42° 25.823' N	123° 44.208' W
Helispot	H-181	42° 33.257' N	124° 3.410' W
Incident Command Post		42° 15.462' N	123° 34.205' W
Landmark	McCaleb Ranch	42° 15.318' N	123° 34.196' W
Landmark	Chittim House	42° 18.441' N	123° 46.196' W
Landmark	Rosenblatt House	42° 17.187' N	123° 43.193' W
Landmark	The Tree House	42° 17.048' N	123° 41.900' W
Mobile Weather Unit		42° 21.192' N	123° 56.965' W
Repeater	IRAWS-47	42° 13.878' N	123° 47.680' W
Repeater	CMD-105	41° 58.819' N	123° 36.887' W
Repeater	CMD-95	42° 0.405' N	123° 32.918' W
Repeater	CMD-7N	42° 14.423' N	123° 46.081' W
Repeater	CMD-8N	42° 20.672' N	123° 39.950' W
Repeater	CMD-9N	42° 26.342' N	123° 43.961' W
Repeater	Whiskey Peak	42° 1.407' N	123° 15.287' W
Repeater	Bear Camp	42° 31.940' N	123° 49.856' W
Repeater	Bolan Mt.	42° 1.007' N	123° 22.271' W
Repeater	Dutchman Peak	42° 2.608' N	123° 53.470' W
Repeater	Eden Ridge	42° 47.138' N	123° 58.555' W
Repeater	Emily	42° 6.023' N	124° 8.572' W
Repeater		42° 14.406' N	123° 46.104' W
Repeater	Grizzly	42° 31.833' N	123° 42.522' W
Repeater	Iron Mountain	42° 41.123' N	124° 8.856' W
Repeater	Lake of The Woods	42° 35.639' N	124° 7.772' W
Repeater	Mt. Ashland	42° 4.841' N	123° 43.019' W
Repeater	Onion Camp	42° 27.257' N	123° 37.121' W
Repeater	Snow Camp	42° 20.706' N	124° 10.055' W
Repeater	CMD-10N	41° 58.819' N	123° 36.887' W
Repeater	CMD-9S	41° 48.012' N	123° 29.610' W
Retardant/Mud Pit		41° 51.615' N	123° 22.975' W
Staging Area	Sugar Pine	42° 24.045' N	123° 37.431' W
Staging Area		41° 52.485' N	123° 26.955' W
Water Source		41° 58.007' N	123° 33.761' W
Water Source		41° 59.819' N	123° 36.887' W
Water Source		41° 59.293' N	123° 35.909' W
Water Source		42° 17.941' N	123° 43.896' W
Water Source		41° 55.228' N	123° 31.175' W

- TFR
- FirePolygon
- FlightHazardPoint
- FlightHazardLine