

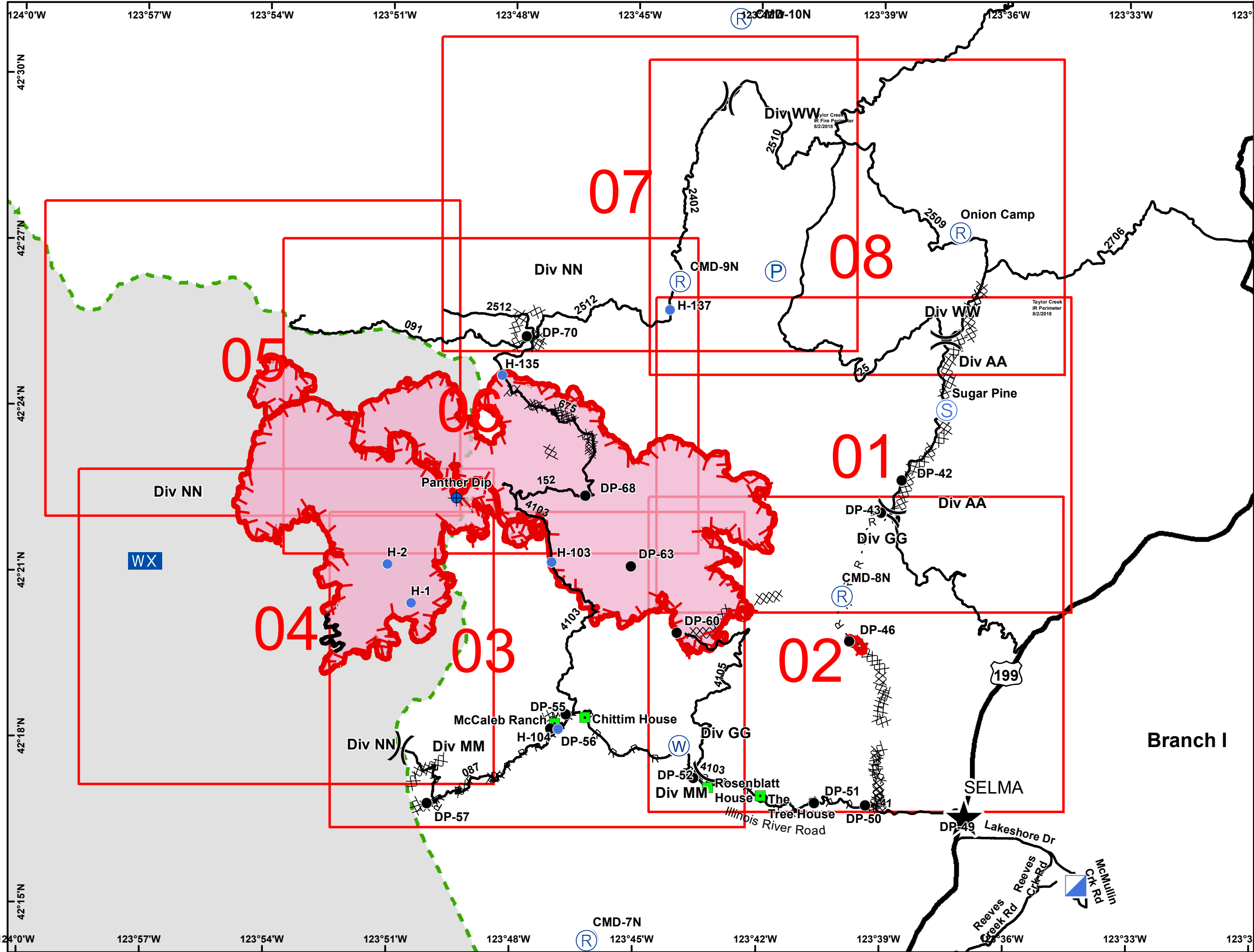
Klondike Fire

OR-RSF-000354

IAP Map

08/03/2018

IR Perimeter - 8/2/2018 @ 2247
Klondike 23,460 acres



- Dip Site
- Drop Point
- Helispot
- Incident Command Post
- Landmark
- WX Mobile Weather Unit
- Pump
- Repeater
- Staging Area
- Water Source
- Division Break
- Towns
- Uncontrolled Fire Edge
- Completed Line
- Completed Dozer Line
- R - Road as Completed Line
- Roads
- Wildfire Daily Fire Perimeter
- Wilderness



Datum NAD 83



Klondike and Natchez Fires

OR-RSF-000354; OR-RSF-000348

IAP Map

08/03/2018

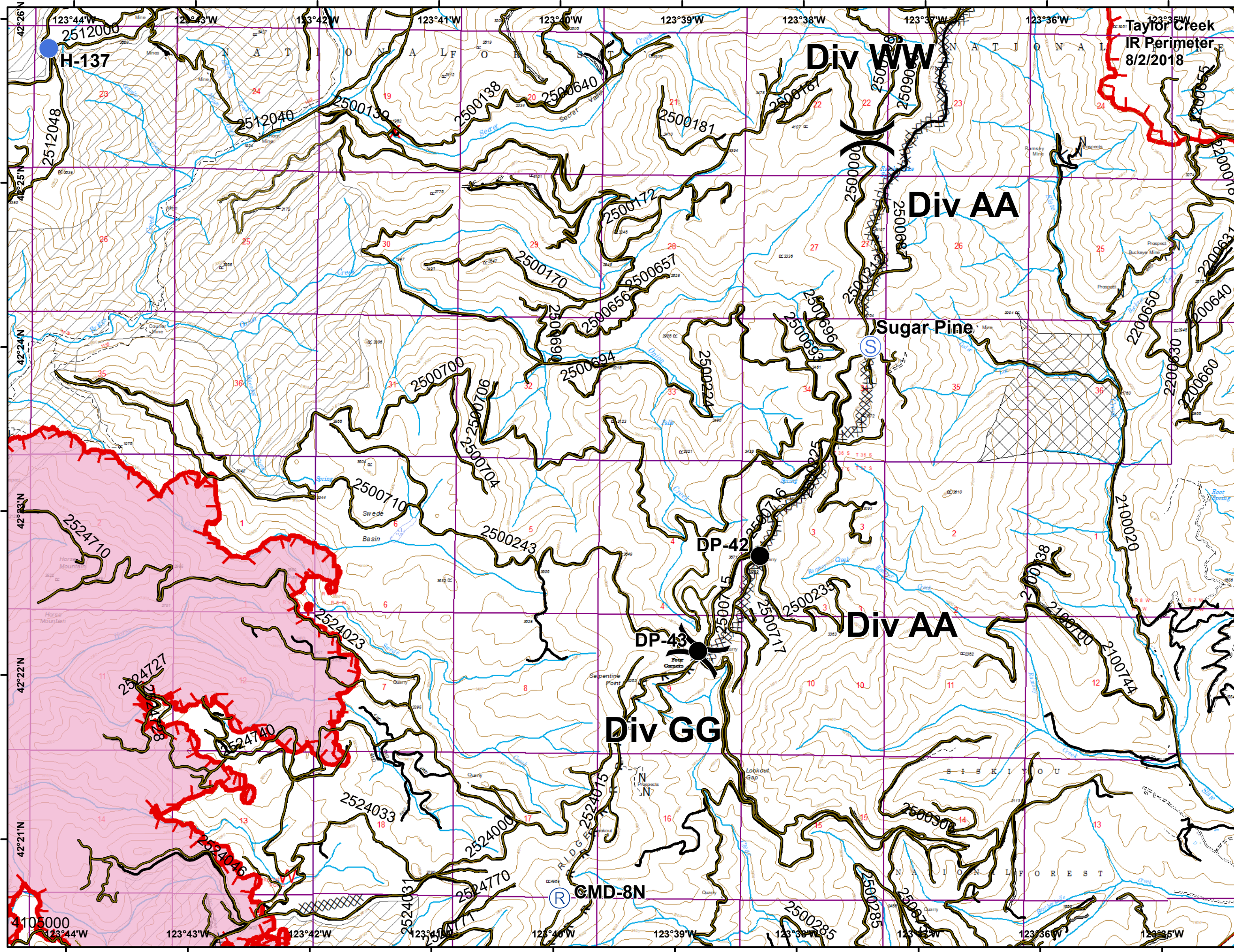
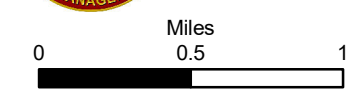
IR Perimeter - 8/2/2018 @ 2247

Klondike 23,460 acres

IR Perimeter - 8/2/2018 @ 2311

Natchez 8,342 acres

-  Drop Point
-  Helispot
-  Repeater
-  Staging Area
-  Division Break
-  Uncontrolled Fire Edge
-  Completed Dozer Line
-  R - R Road as Completed Line
-  Roads
-  Streams
-  Wildfire Daily Fire Perimeter
-  Inventory Roadless
-  Research_Natural_Areas
-  Wilderness
-  Taylor Creek Heat Perimeter



Klondike and Natchez Fires

OR-RSF-000354; OR-RSF-000348

IAP Map





08/03/2018

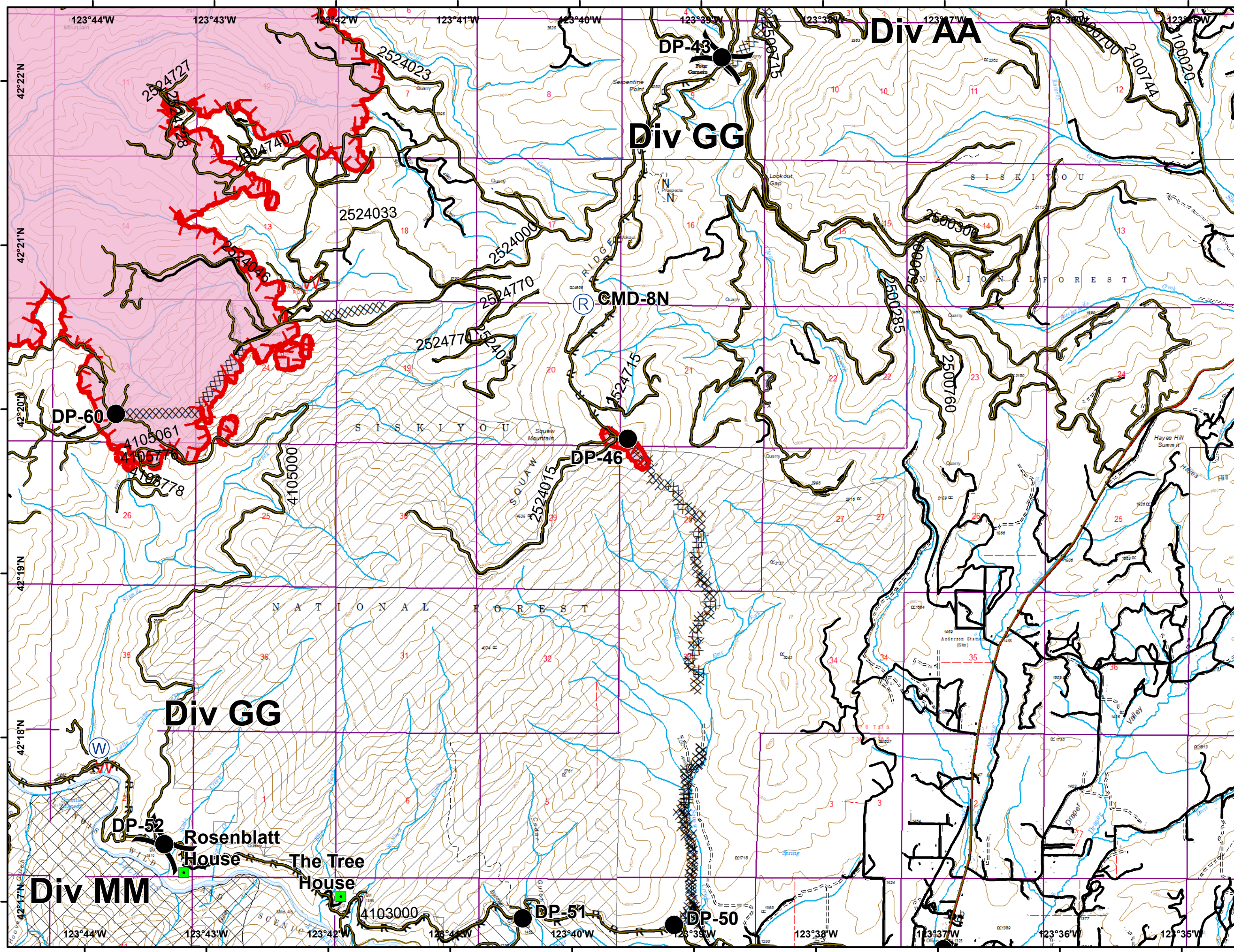
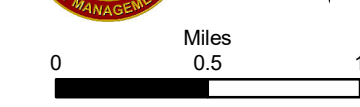
IR Perimeter - 8/2/2018 @ 2247

Klondike 23,460 acres

IR Perimeter - 8/2/2018 @ 2311

Natchez 8,342 acres

-  Drop Point
-  Landmark
-  Repeater
-  Water Source
-  Division Break
-  Uncontrolled Fire Edge
-  Completed Dozer Line
-  R - R Road as Completed Line
-  Roads
-  Streams
-  Wildfire Daily Fire Perimeter
-  Inventory Roadless
-  Research_Natural_Areas
-  RRSNF_BotanicalAreas
-  Wilderness



Klondike and Natchez Fires

OR-RSF-000354; OR-RSF-000348

IAP Map





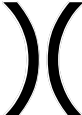










08/03/2018

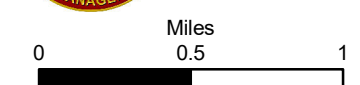
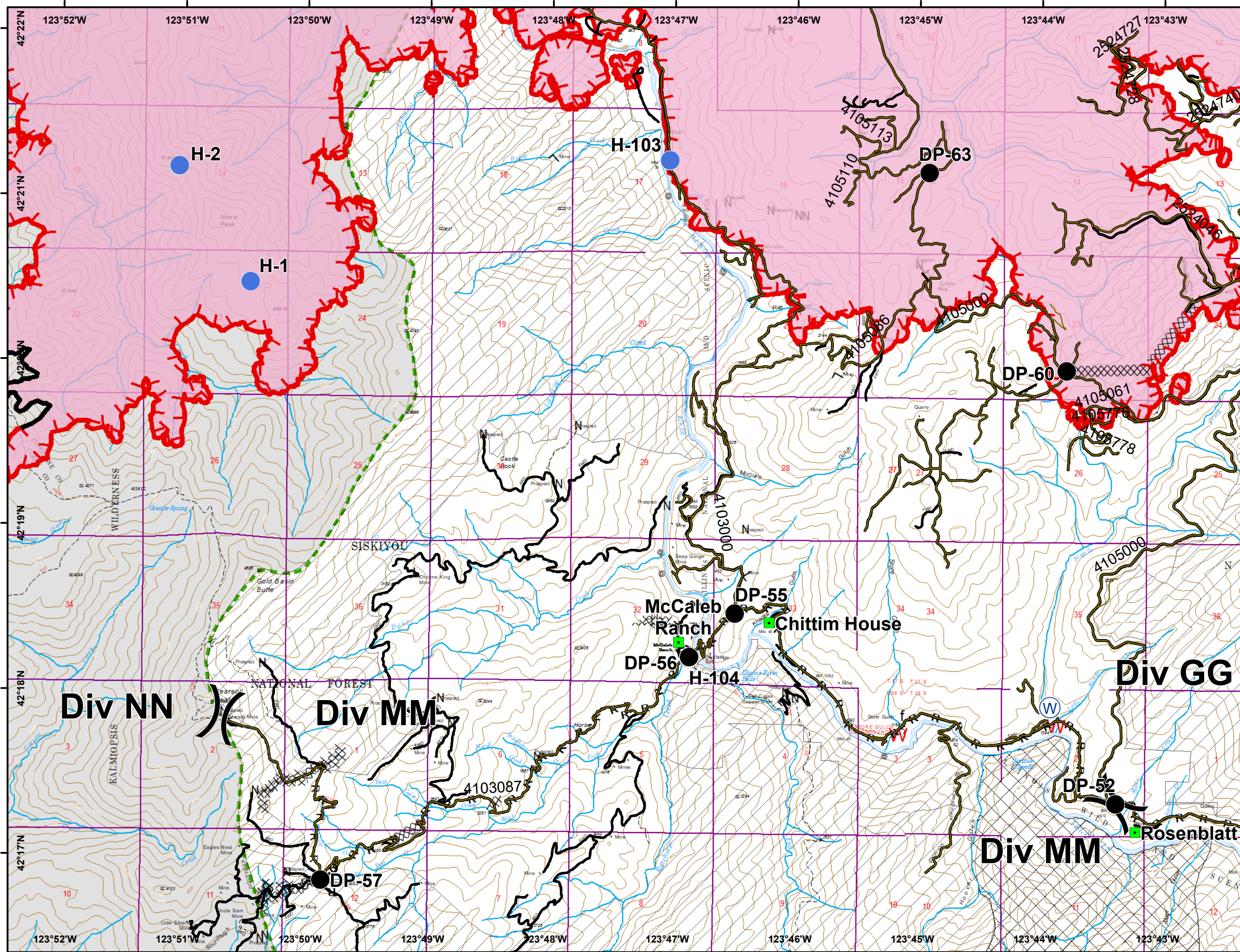
IR Perimeter - 8/2/2018 @ 2247

Klondike 23,460 acres

IR Perimeter - 8/2/2018 @ 2311

Natchez 8,342 acres

-  Drop Point
-  Helispot
-  Landmark
-  Water Source
-  Division Break
-  Uncontrolled Fire Edge
-  Completed Line
-  Completed Dozer Line
-  R - R Road as Completed Line
-  Roads
-  Streams
-  Wildfire Daily Fire Perimeter
-  Inventory Roadless
-  Research_Natural_Areas
-  Wilderness



Klondike and Natchez Fires

OR-RSF-000354; OR-RSF-000348

IAP Map

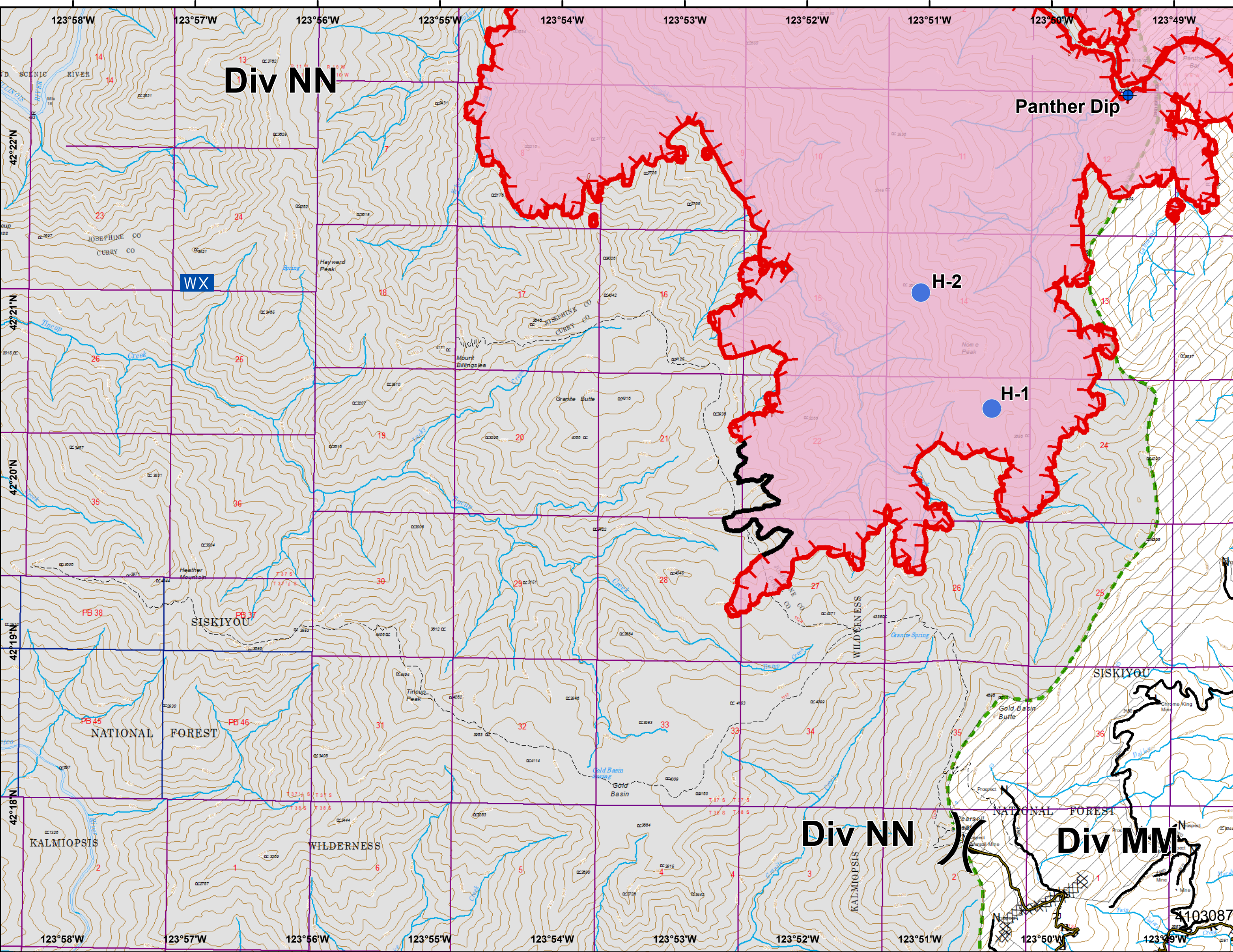
08/03/2018

IR Perimeter - 8/2/2018 @ 2247

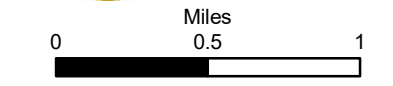
Klondike 23,460 acres

IR Perimeter - 8/2/2018 @ 2311

Natchez 8,342 acres



- Dip Site
- Helispot
- Mobile Weather Unit
- Division Break
- Uncontrolled Fire Edge
- Completed Line
- Completed Dozer Line
- R - R Road as Completed Line
- Roads
- Streams
- Wildfire Daily Fire Perimeter
- Inventory Roadless
- Wilderness



Klondike and Natchez Fires

OR-RSF-000354; OR-RSF-000348

IAP Map








08/03/2018

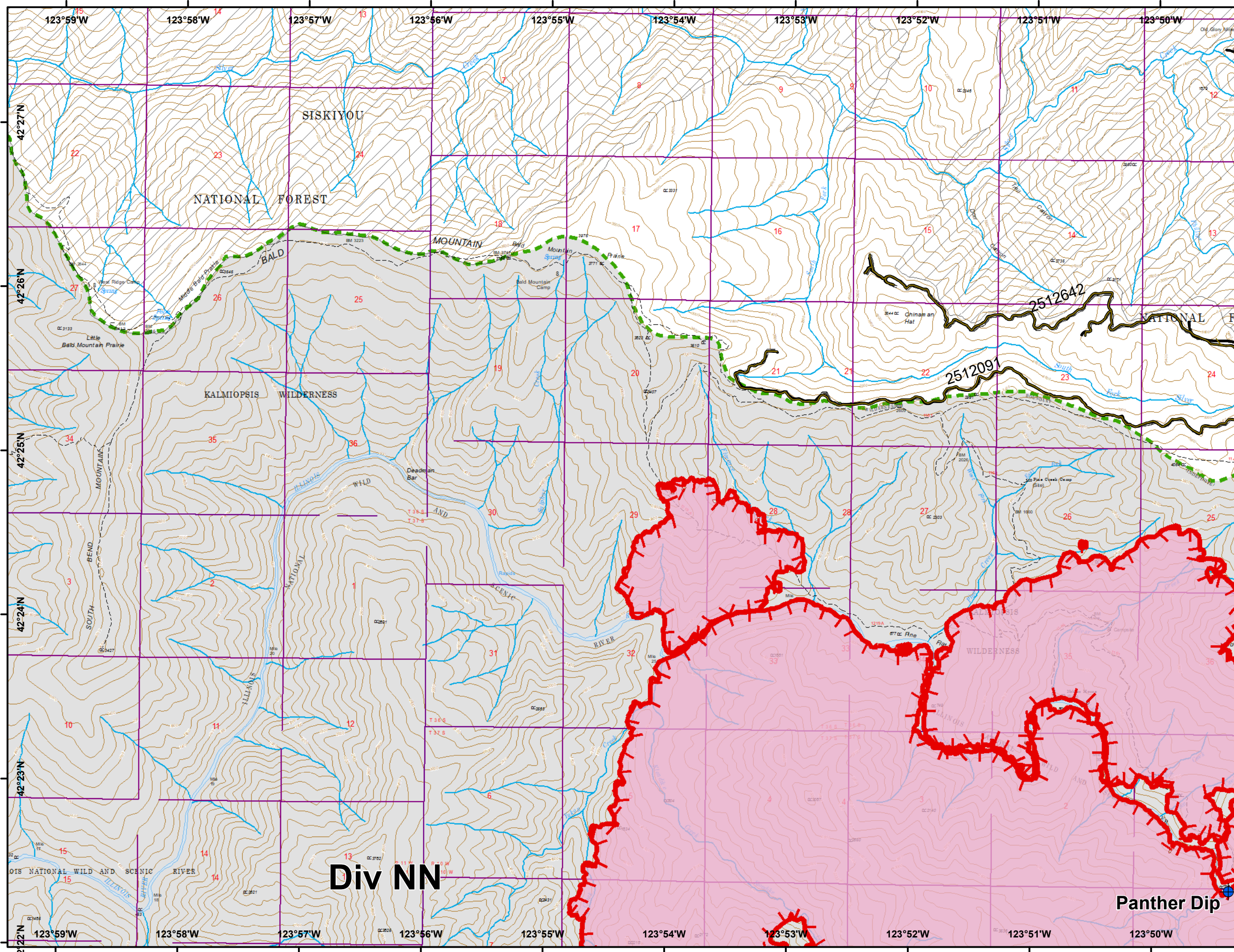
IR Perimeter - 8/2/2018 @ 2247

Klondike 23,460 acres

IR Perimeter - 8/2/2018 @ 2311

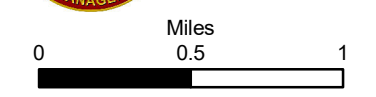
Natchez 8,342 acres

-  Dip Site
-  Uncontrolled Fire Edge
-  Roads
-  Streams
-  Wildfire Daily Fire Perimeter
-  Inventory Roadless
-  Wilderness



Div NN

Panther Dip



Klondike and Natchez Fires

OR-RSF-000354; OR-RSF-000348

IAP Map












08/03/2018

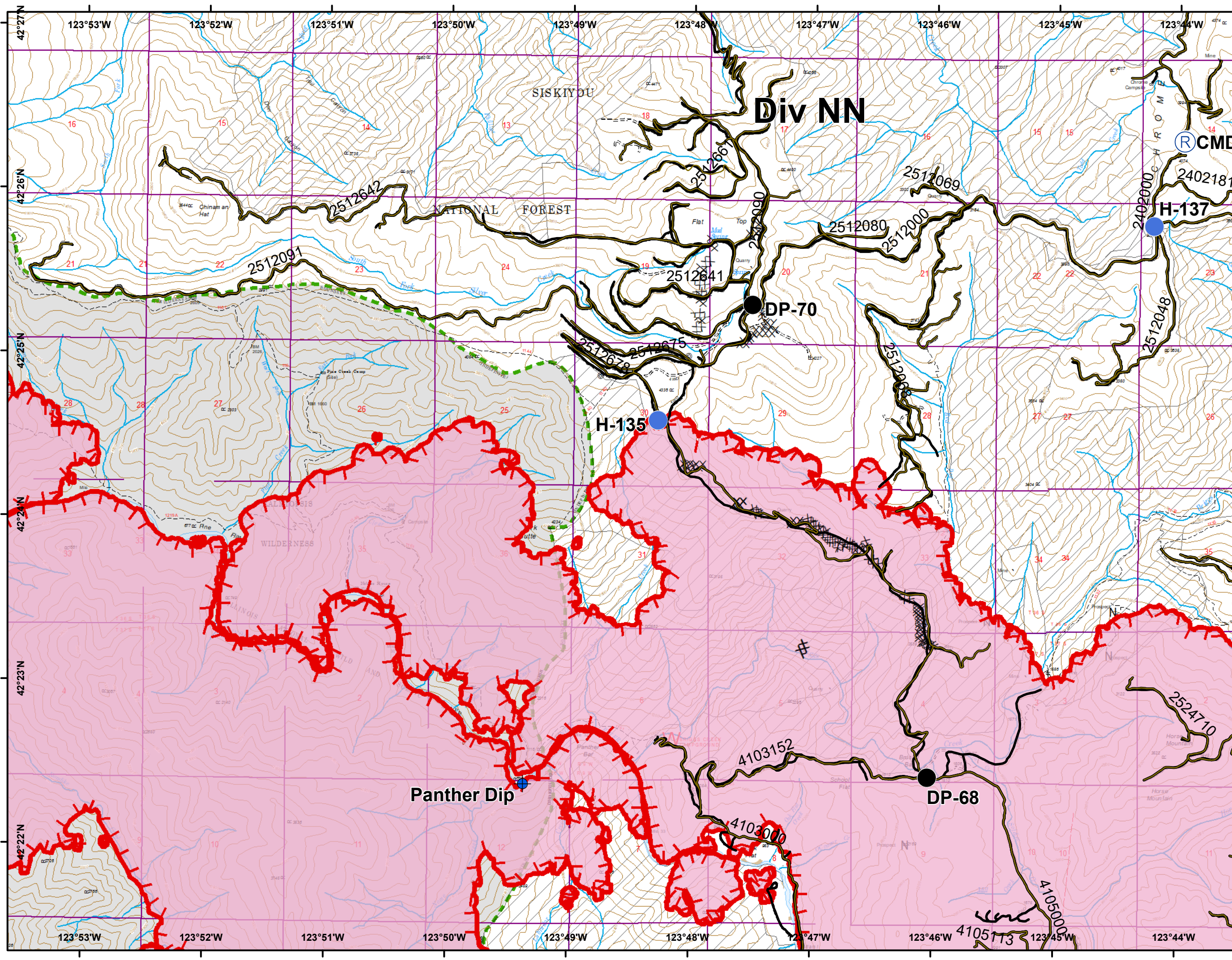
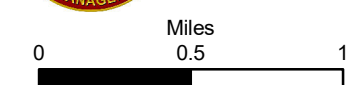
IR Perimeter - 8/2/2018 @ 2247

Klondike 23,460 acres

IR Perimeter - 8/2/2018 @ 2311

Natchez 8,342 acres

-  Dip Site
-  Drop Point
-  Helispot
-  Repeater
-  Uncontrolled Fire Edge
-  Completed Dozer Line
-  Roads
-  Streams
-  Wildfire Daily Fire Perimeter
-  Inventory Roadless
-  Wilderness



Klondike and Natchez Fires

OR-RSF-000354; OR-RSF-000348

IAP Map

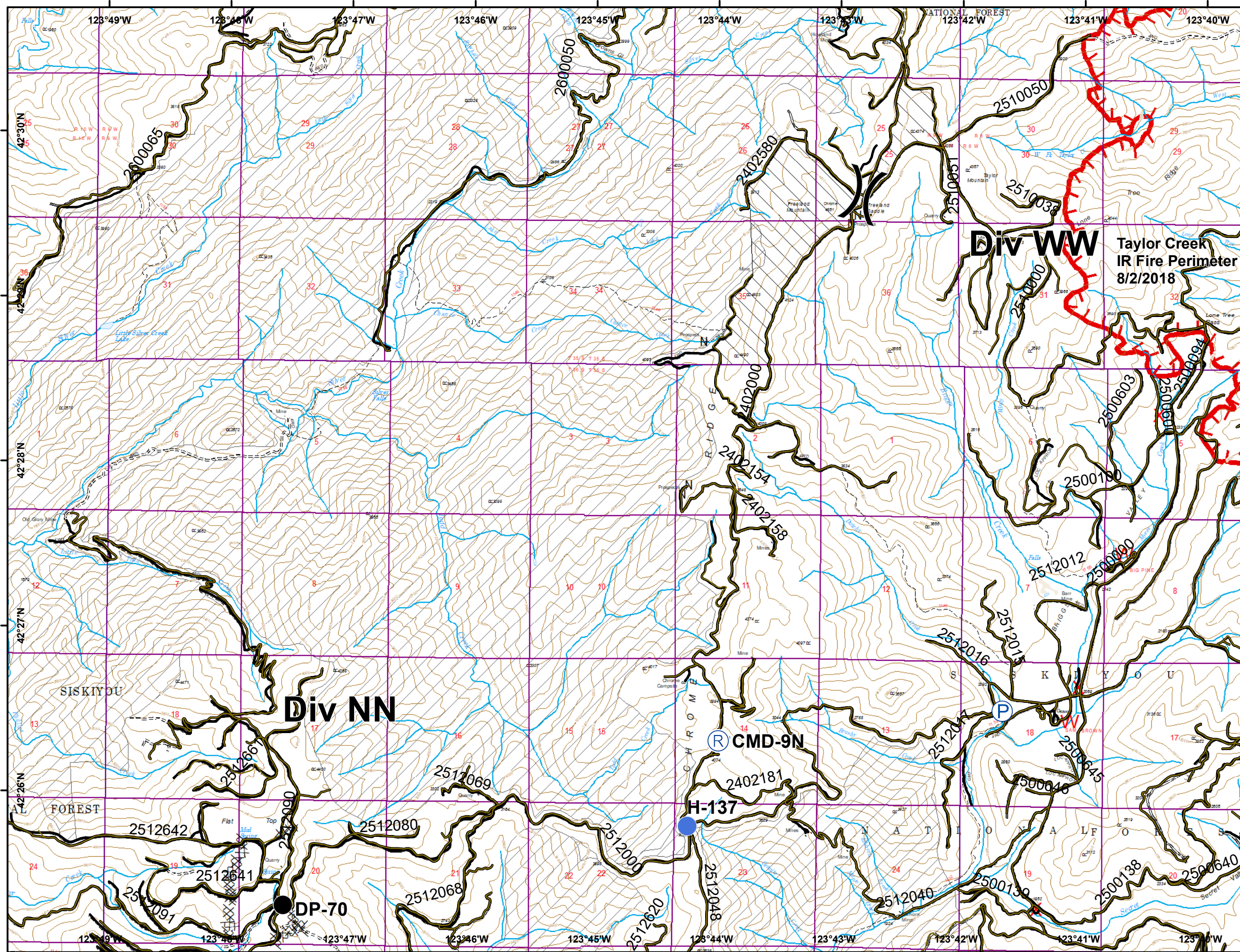
08/03/2018









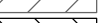



IR Perimeter - 8/2/2018 @ 2247

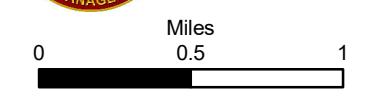
Klondike 23,460 acres

IR Perimeter - 8/2/2018 @ 2311

Natchez 8,342 acres



-  Drop Point
-  Helispot
-  Pump
-  Repeater
-  Division Break
-  Completed Dozer Line
-  Roads
-  Streams
-  Inventory Roadless
-  RRSNF Botanical Areas
-  Wilderness
-  Taylor Creek Heat Perimeter



Klondike and Natchez Fires

OR-RSF-000354; OR-RSF-000348

IAP Map




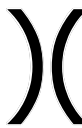







08/03/2018

IR Perimeter - 8/2/2018 @ 2247

Klondike 23,460 acres

IR Perimeter - 8/2/2018 @ 2311

Natchez 8,342 acres

-  Helispot
-  Pump
-  Repeater
-  Division Break
-  Completed Dozer Line
-  Roads
-  Streams
-  Inventory Roadless
-  RRSNF_BotanicalAreas
-  Wilderness
-  Taylor Creek Heat Perimeter

