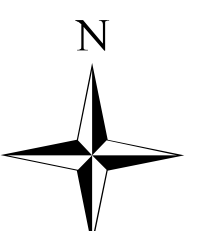


Natchez Fire

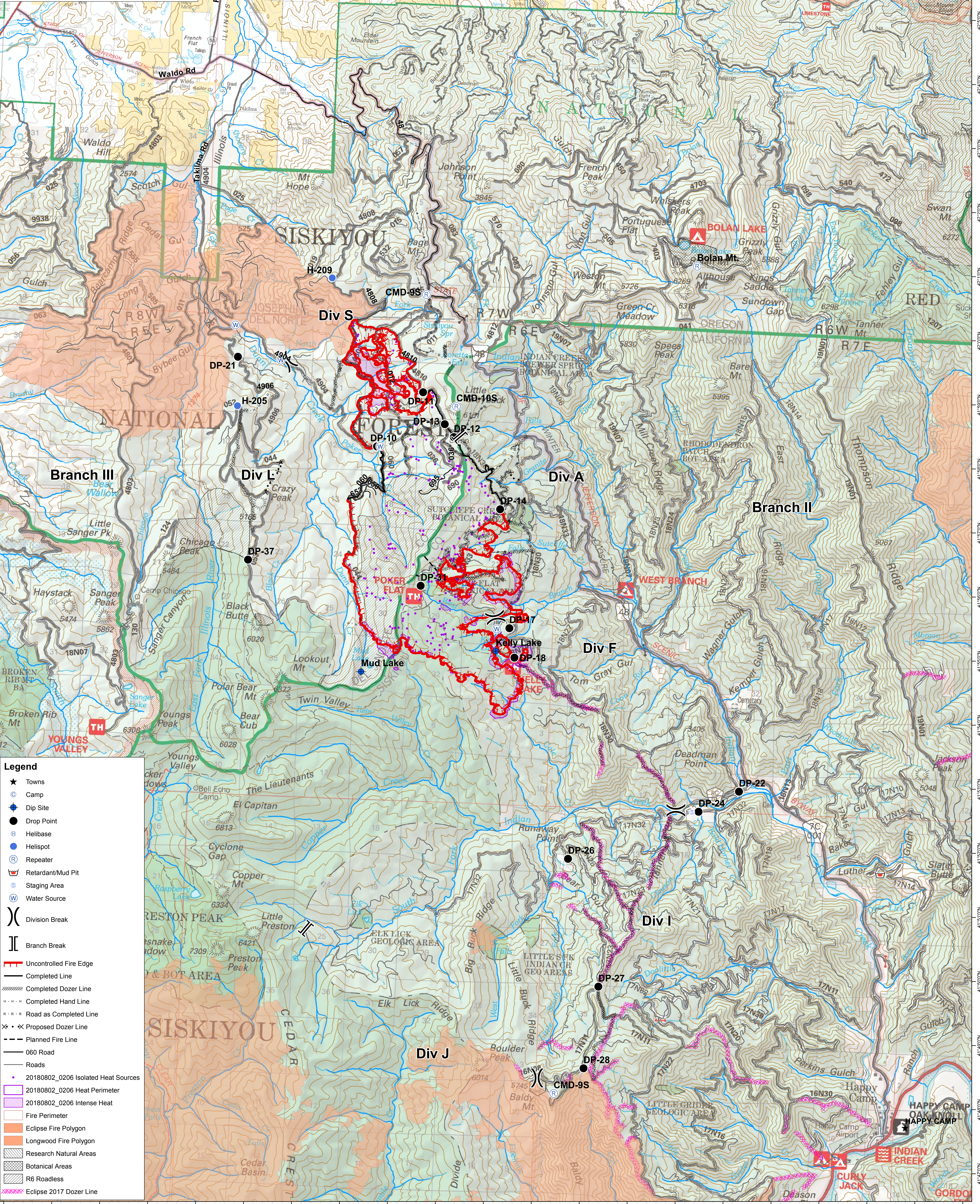
OR-RSF-000348

Operations IR Map

08/03/2018
Branch II and III
IR Perimeter
08/02/2018 @ 2311
8,432 acres



0 0.5 1 2 Miles



- ### Legend
- ★ Towns
 - ⊙ Camp
 - ⊙ Dip Site
 - Drop Point
 - ⊙ Helibase
 - ⊙ Helispot
 - ⊙ Repeater
 - ⊙ Retardant/Mud Pit
 - ⊙ Staging Area
 - ⊙ Water Source
 - ⊕ Division Break
 - ⊕ Branch Break
 - Uncontrolled Fire Edge
 - Completed Line
 - ⊕ Completed Dozer Line
 - ⊕ Completed Hand Line
 - ⊕ Road as Completed Line
 - ⊕ Proposed Dozer Line
 - ⊕ Planned Fire Line
 - 060 Road
 - Roads
 - 20180802_0206 Isolated Heat Sources
 - 20180802_0206 Heat Perimeter
 - 20180802_0206 Intense Heat
 - Fire Perimeter
 - Eclipse Fire Polygon
 - Longwood Fire Polygon
 - Research Natural Areas
 - Botanical Areas
 - R6 Roadless
 - ⊕ Eclipse 2017 Dozer Line