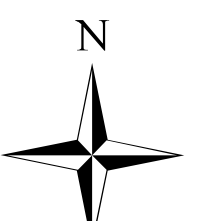


Natchez Fire

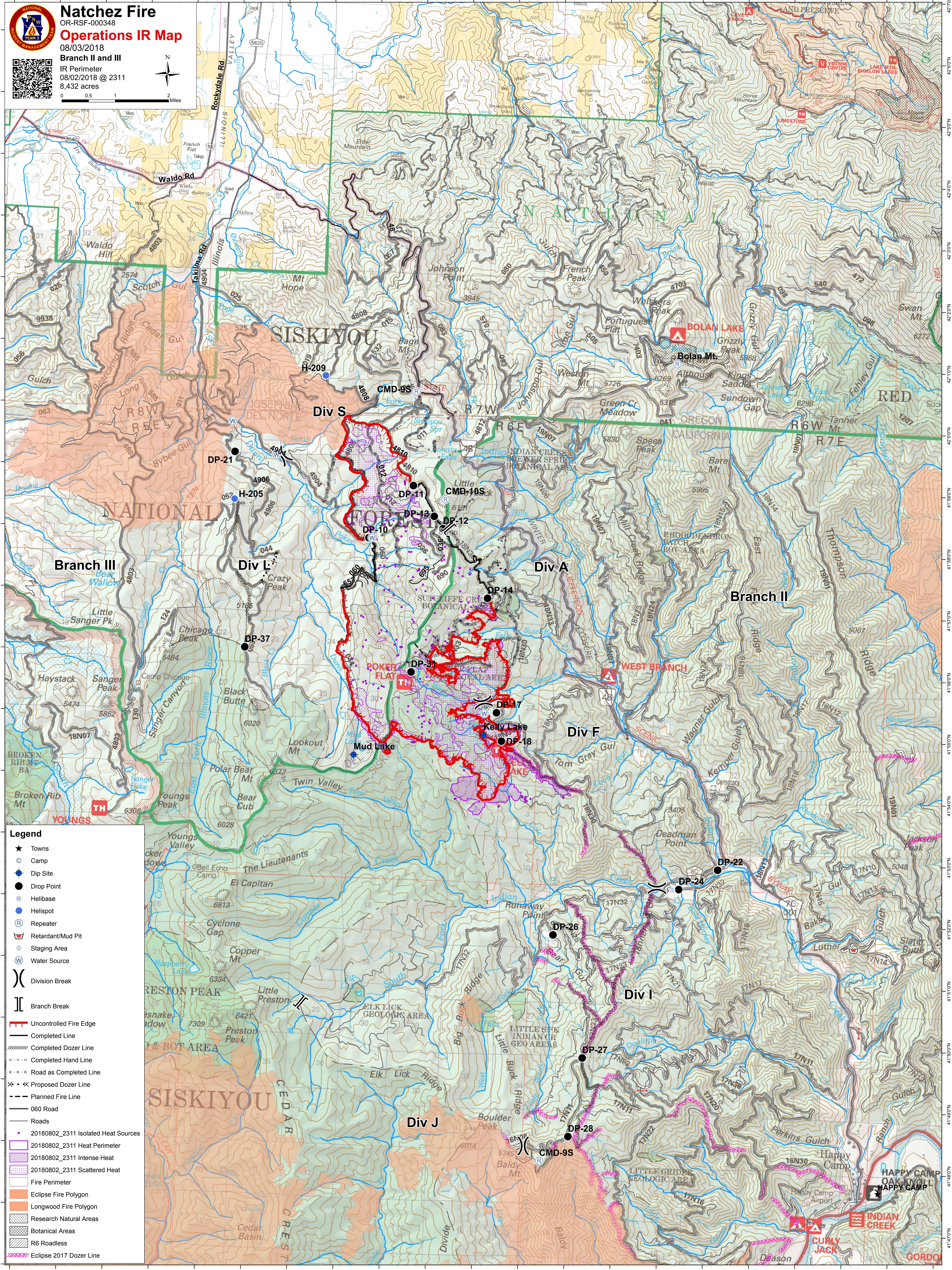
OR-RSF-000348

Operations IR Map

08/03/2018
Branch II and III
IR Perimeter
08/02/2018 @ 2311
8,432 acres



0 0.5 1 2 Miles



- Legend**
- ★ Towns
 - ⊙ Camp
 - ⊙ Dip Site
 - Drop Point
 - ⊙ Helibase
 - ⊙ Helispot
 - ⊙ Repeater
 - ⊙ Retardant/Mud Pit
 - ⊙ Staging Area
 - ⊙ Water Source
 - ⊂ Division Break
 - ⊂ Branch Break
 - Uncontrolled Fire Edge
 - Completed Line
 - Completed Dozer Line
 - Completed Hand Line
 - Road as Completed Line
 - Proposed Dozer Line
 - Planned Fire Line
 - 060 Road
 - Roads
 - 20180802_2311 Isolated Heat Sources
 - 20180802_2311 Heat Perimeter
 - 20180802_2311 Intense Heat
 - 20180802_2311 Scattered Heat
 - Fire Perimeter
 - Eclipse Fire Polygon
 - Longwood Fire Polygon
 - Research Natural Areas
 - Botanical Areas
 - R6 Roadless
 - Eclipse 2017 Dozer Line