



Natchez Fire

OR-RSF-000348

Operations Map

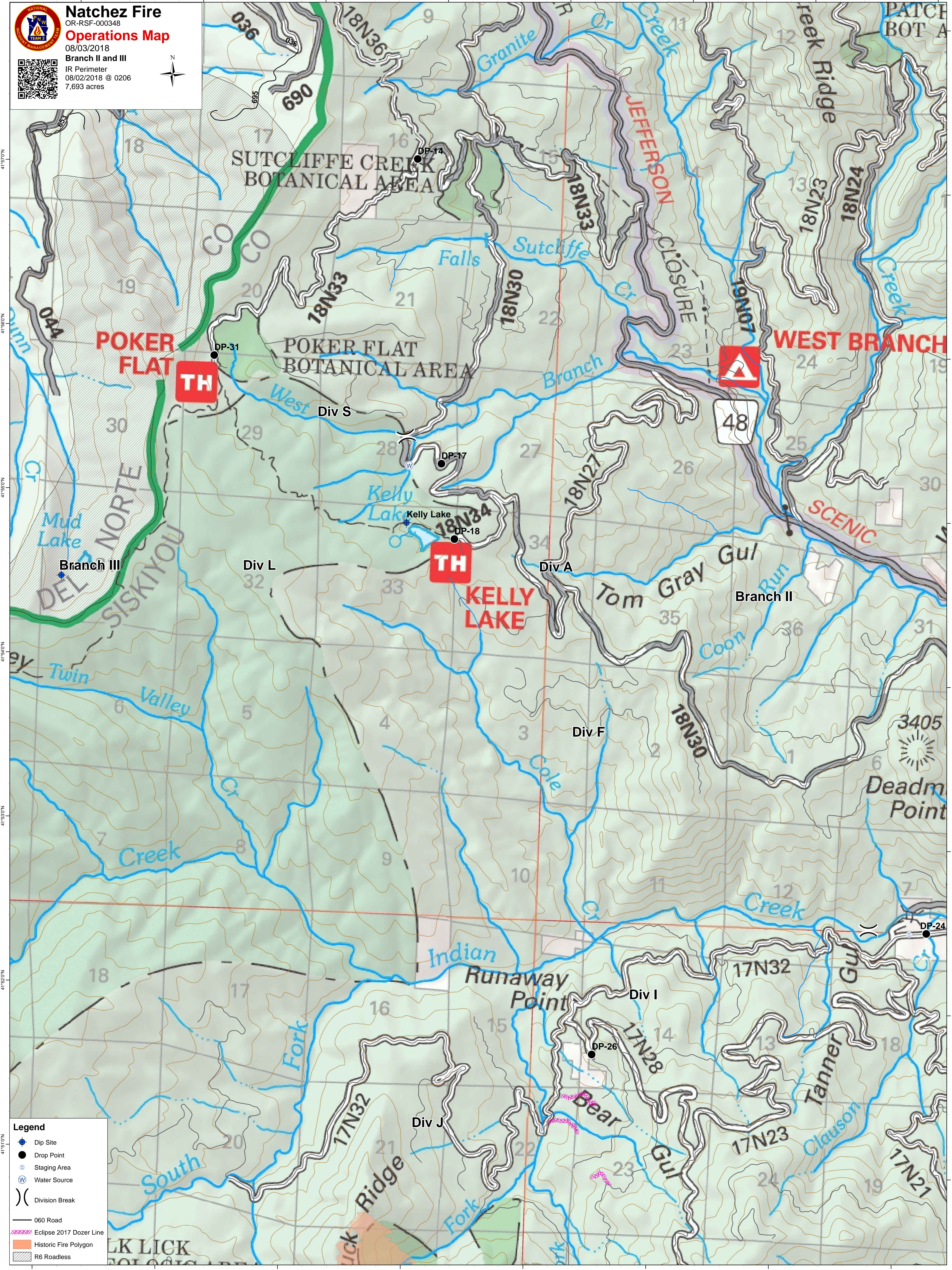
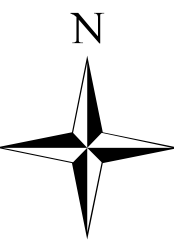
08/03/2018

Branch II and III

IR Perimeter

08/02/2018 @ 0206

7,693 acres



- Legend**
- Dip Site
 - Drop Point
 - Staging Area
 - Water Source
 - Division Break
 - 060 Road
 - Eclipse 2017 Dozer Line
 - Historic Fire Polygon
 - R6 Roadless

123°34'0"W 123°33'0"W 123°32'0"W 123°31'0"W 123°30'0"W 123°29'0"W 123°28'0"W 123°27'0"W

41°57'0"N 41°56'0"N 41°55'0"N 41°54'0"N 41°53'0"N 41°52'0"N 41°51'0"N