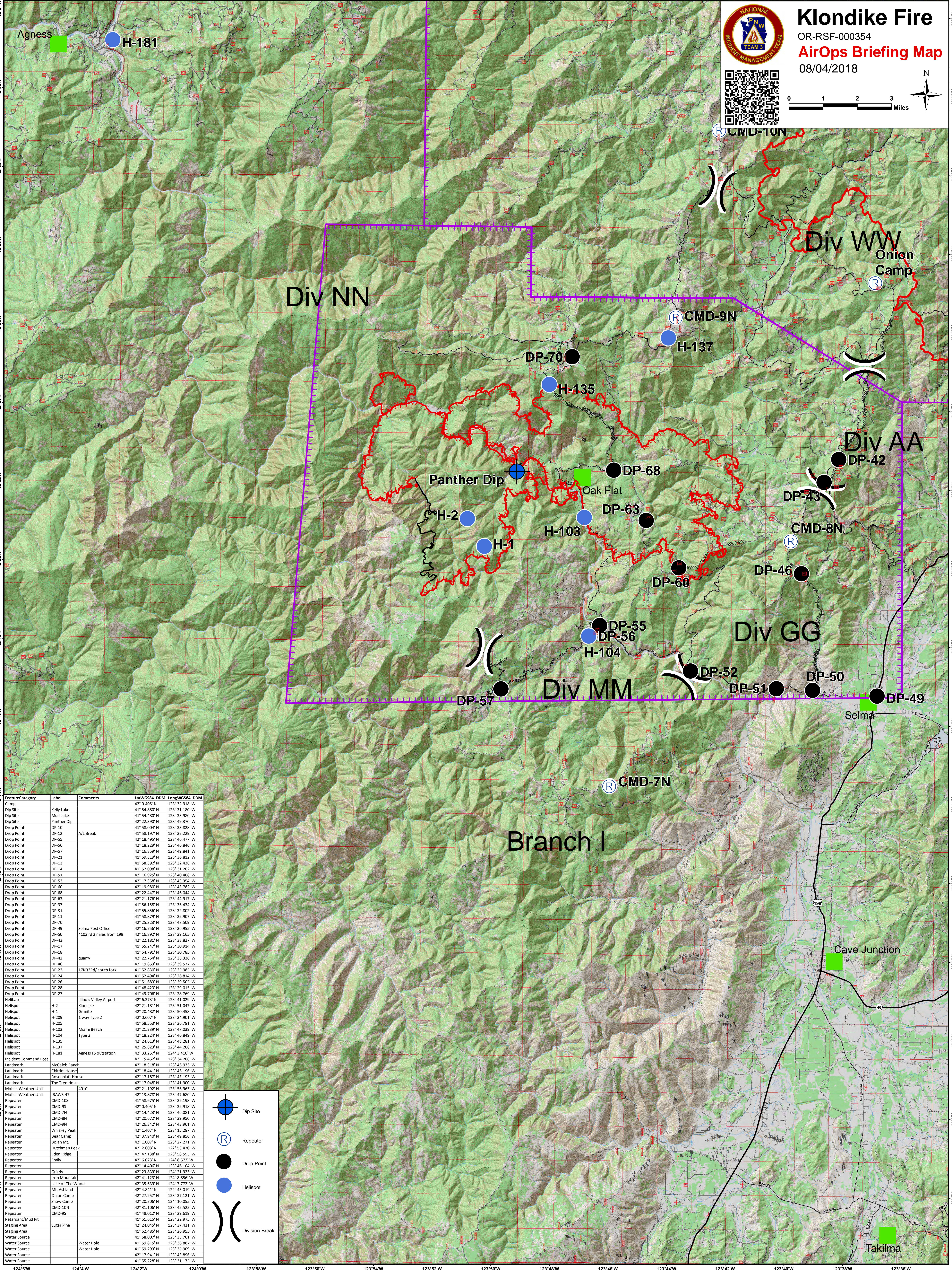
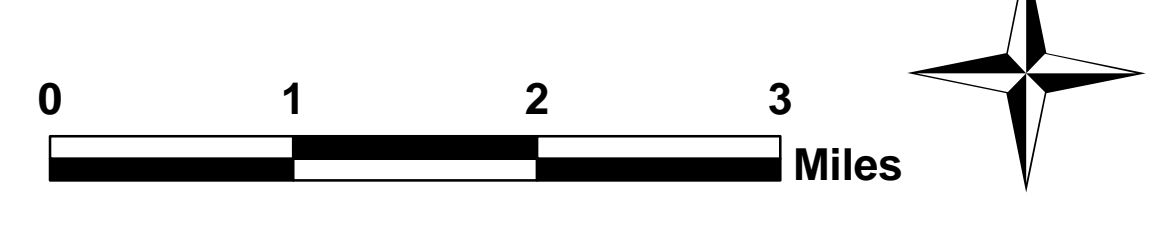




Klondike Fire

OR-RSF-000354
AirOps Briefing Map
08/04/2018



FeatureCategory	Label	Comments	LatWGS84_DDM	LongWGS84_DDM
Camp			42° 0.405' N	123° 32.918' W
Dip Site	Kelly Lake		41° 54.880' N	123° 31.180' W
Dip Site	Mud Lake		41° 54.480' N	123° 33.980' W
Dip Site	Panther Dip		42° 22.390' N	123° 49.370' W
Drop Point	DP-10		41° 58.004' N	123° 33.828' W
Drop Point	DP-12	A/L Break	41° 58.197' N	123° 32.229' W
Drop Point	DP-55		42° 18.495' N	123° 46.477' W
Drop Point	DP-56		42° 18.229' N	123° 46.846' W
Drop Point	DP-57		42° 16.859' N	123° 39.941' W
Drop Point	DP-21		41° 59.319' N	123° 36.812' W
Drop Point	DP-13		41° 58.392' N	123° 32.428' W
Drop Point	DP-14		41° 57.098' N	123° 31.202' W
Drop Point	DP-51		42° 16.925' N	123° 40.408' W
Drop Point	DP-11		42° 17.358' N	123° 43.354' W
Drop Point	DP-60		42° 19.980' N	123° 42.782' W
Drop Point	DP-68		42° 22.447' N	123° 46.044' W
Drop Point	DP-63		42° 21.176' N	123° 44.917' W
Drop Point	DP-37		41° 56.158' N	123° 36.434' W
Drop Point	DP-31		41° 55.856' N	123° 32.802' W
Drop Point	DP-11		41° 58.879' N	123° 32.907' W
Drop Point	DP-70		42° 25.223' N	123° 47.509' W
Drop Point	DP-49	Selma Post Office	42° 16.756' N	123° 36.955' W
Drop Point	DP-50	4103 rd 2 miles from 199	42° 16.892' N	123° 39.165' W
Drop Point	DP-43		42° 22.181' N	123° 38.827' W
Drop Point	DP-17		41° 55.247' N	123° 30.914' W
Drop Point	DP-18		41° 54.191' N	123° 30.965' W
Drop Point	DP-42	quarry	42° 22.764' N	123° 38.326' W
Drop Point	DP-46		42° 19.853' N	123° 39.577' W
Drop Point	DP-22	17N32Rd/ south fork	41° 52.830' N	123° 25.985' W
Drop Point	DP-24		41° 52.494' N	123° 26.814' W
Drop Point	DP-26		41° 51.683' N	123° 29.505' W
Drop Point	DP-39		41° 48.422' N	123° 29.061' W
Drop Point	DP-27		41° 49.706' N	123° 28.769' W
Helibase		Illinois Valley Airport	42° 6.373' N	123° 41.029' W
Helispot	H-2	Klondike	42° 21.181' N	123° 51.047' W
Helispot	H-1	Granite	42° 20.482' N	123° 50.458' W
Helispot	H-209	1 way Type 2	42° 0.607' N	123° 58.961' W
Helispot	H-205		41° 58.553' N	123° 56.781' W
Helispot	H-103	Miami Beach	42° 21.239' N	123° 47.039' W
Helispot	H-104	Type 2	42° 18.224' N	123° 46.849' W
Helispot	H-135		42° 24.613' N	123° 48.281' W
Helispot	H-137		42° 25.823' N	123° 44.208' W
Helispot	H-181	Agness FS outstation	42° 15.462' N	123° 34.206' W
Incident Command Post		McCaleb Ranch	42° 18.318' N	123° 46.933' W
Landmark		Chittim House	42° 18.441' N	123° 46.196' W
Landmark		Rosenblatt House	42° 17.187' N	123° 43.193' W
Landmark		The Tree House	42° 17.048' N	123° 41.900' W
Mobile Weather Unit	IRAWS-47	4010	42° 11.102' N	123° 50.965' W
Repeater	CMD-105		41° 58.675' N	123° 32.198' W
Repeater	CMD-95		42° 0.405' N	123° 32.918' W
Repeater	CMD-7N		42° 14.423' N	123° 46.081' W
Repeater	CMD-8N		42° 20.672' N	123° 39.950' W
Repeater	CMD-9N		42° 16.822' N	123° 39.061' W
Repeater	Whiskey Peak		42° 1.407' N	123° 15.287' W
Repeater	Bear Camp		42° 37.940' N	123° 49.856' W
Repeater	Bolan Mt.		42° 1.007' N	123° 27.271' W
Repeater	Dutchman Peak		42° 2.608' N	123° 53.470' W
Repeater	Eisen Ridge		42° 07.188' N	123° 58.551' W
Repeater	Emly		42° 6.023' N	124° 8.572' W
Repeater			42° 14.406' N	123° 46.104' W
Repeater	Grizzly		42° 23.839' N	124° 21.923' W
Repeater	Iron Mountain		42° 41.123' N	124° 8.856' W
Repeater	Lake of The Woods		42° 35.639' N	124° 7.772' W
Repeater	Mt. Ashland		42° 4.841' N	123° 53.019' W
Repeater	Onion Camp		42° 27.257' N	123° 37.121' W
Repeater	Snow Camp		42° 20.706' N	124° 10.055' W
Repeater	CMD-10N		42° 31.106' N	123° 42.522' W
Repeater	CMD-9S		41° 48.012' N	123° 29.619' W
Retardant/Mud Pit			41° 51.615' N	123° 22.975' W
Staging Area	Sugar Pine		42° 14.045' N	123° 27.421' W
Staging Area			41° 52.485' N	123° 26.955' W
Water Source			41° 58.007' N	123° 33.761' W
Water Source		Water Hole	41° 59.815' N	123° 36.887' W
Water Source		Water Hole	41° 59.293' N	123° 35.909' W
Water Source			42° 17.941' N	123° 43.896' W
Water Source			41° 55.528' N	123° 31.115' W

Dip Site
 Repeater
 Drop Point
 Helispot
 Division Break

Branch I

42°34'N 42°32'N 42°30'N 42°28'N 42°26'N 42°24'N 42°22'N 42°20'N 42°18'N 42°16'N 42°14'N 42°12'N 42°10'N 42°8'N 42°6'N 42°4'N 42°2'N

124°6'W 124°4'W 124°2'W 124°0'W 123°58'W 123°56'W 123°54'W 123°52'W 123°50'W 123°48'W 123°46'W 123°44'W 123°42'W 123°40'W 123°38'W 123°36'W