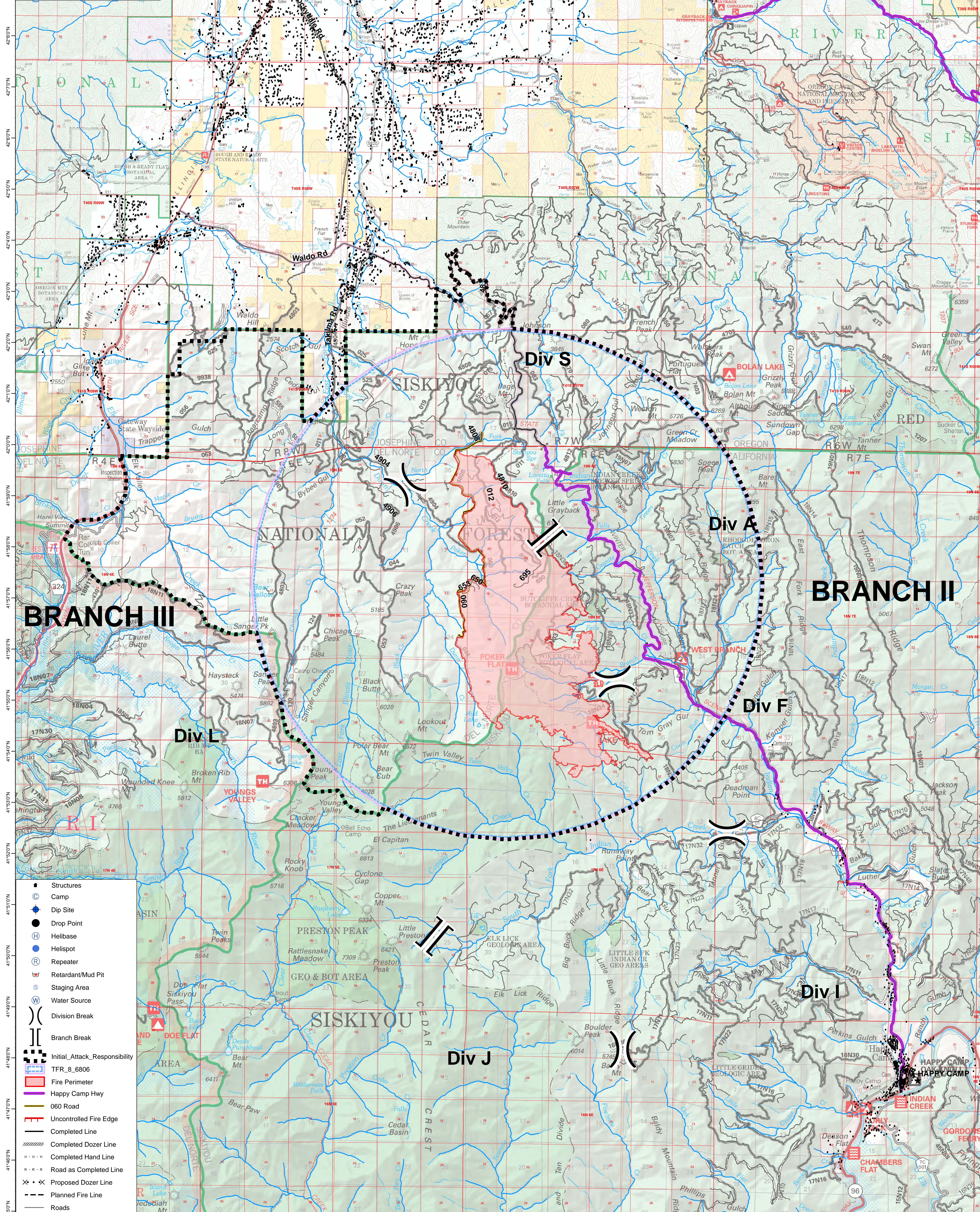


123°46'0"W 123°45'0"W 123°44'0"W 123°43'0"W 123°42'0"W 123°41'0"W 123°40'0"W 123°39'0"W 123°38'0"W 123°37'0"W 123°36'0"W 123°35'0"W 123°34'0"W 123°33'0"W 123°32'0"W 123°31'0"W 123°30'0"W 123°29'0"W 123°28'0"W 123°27'0"W 123°26'0"W 123°25'0"W 123°24'0"W 123°23'0"W 123°22'0"W 123°21'0"W

**Natchez Fire**  
OR-RSF-000348  
**IA Responsibility**  
08/04/2018  
Branch II and III  
IR Perimeter  
08/02/2018 @ 2311  
8,432 acres



- Structures
- ⊙ Camp
- ⊕ Dip Site
- Drop Point
- ⊕ Helibase
- ⊕ Helispot
- ⊕ Repeater
- ⊕ Retardant/Mud Pit
- ⊕ Staging Area
- ⊕ Water Source
- ⊕ Division Break
- ⊕ Branch Break
- ⊕ Initial\_Attack\_Responsibility
- ⊕ TFR\_8\_6806
- ⊕ Fire Perimeter
- ⊕ Happy Camp Hwy
- ⊕ 060 Road
- ⊕ Uncontrolled Fire Edge
- ⊕ Completed Line
- ⊕ Completed Dozer Line
- ⊕ Completed Hand Line
- ⊕ Road as Completed Line
- ⊕ Proposed Dozer Line
- ⊕ Planned Fire Line
- ⊕ Roads

123°46'0"W 123°44'0"W 123°43'0"W 123°42'0"W 123°41'0"W 123°40'0"W 123°39'0"W 123°38'0"W 123°37'0"W 123°36'0"W 123°35'0"W 123°34'0"W 123°33'0"W 123°32'0"W 123°31'0"W 123°30'0"W 123°29'0"W 123°28'0"W 123°27'0"W 123°26'0"W 123°25'0"W 123°24'0"W 123°23'0"W 123°22'0"W 123°21'0"W