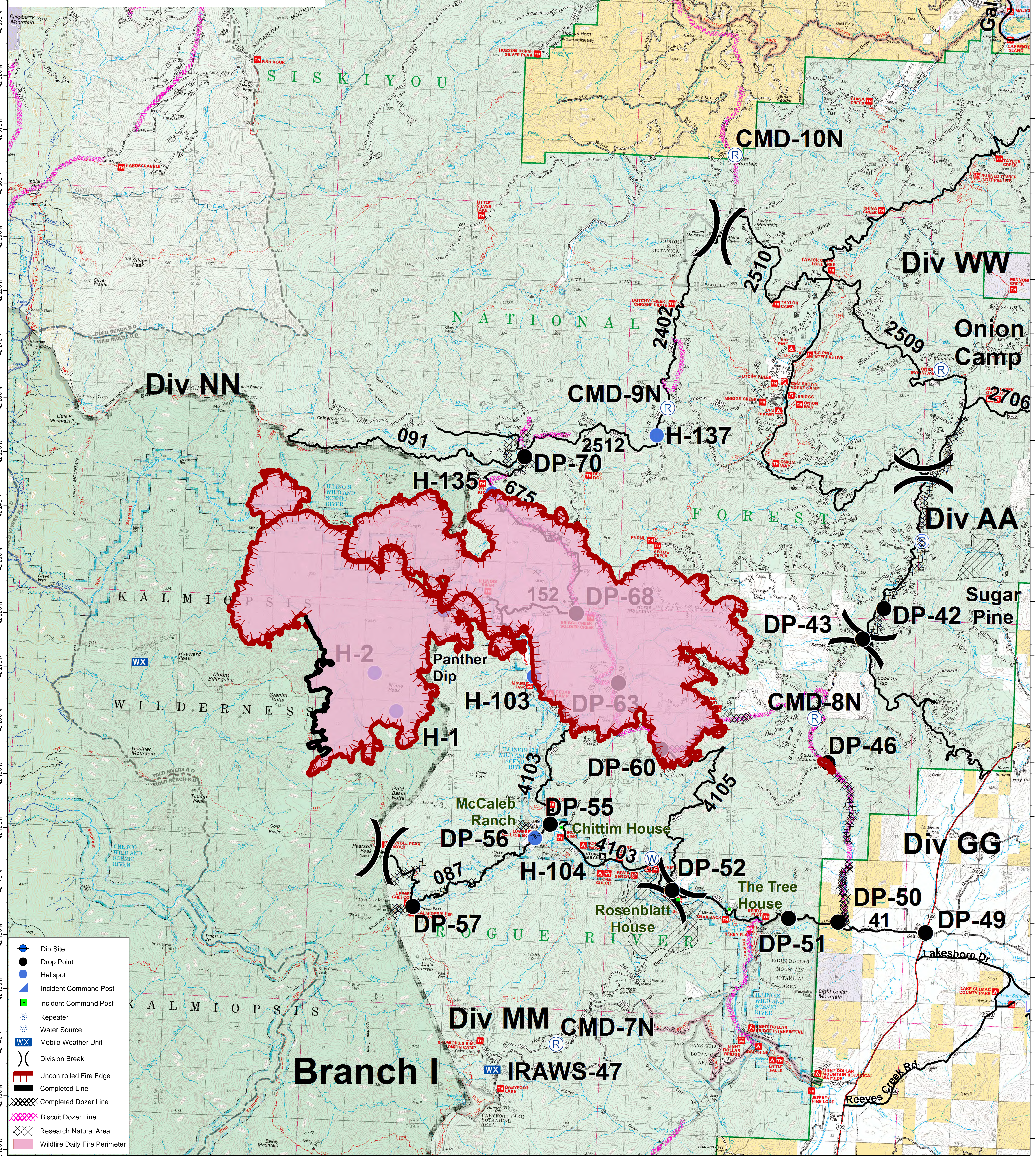


**Klondike Fire**  
OR-RSF-000354  
**Briefing Map**

08/04/2018  
Branch I  
IR Perimeter  
08/02/2018 @ 2247  
23,460 acres



- Dip Site
- Drop Point
- Helispot
- Incident Command Post
- Incident Command Post
- Repeater
- Water Source
- Mobile Weather Unit
- Division Break
- Uncontrolled Fire Edge
- Completed Line
- Completed Dozer Line
- Biscuit Dozer Line
- Research Natural Area
- Wildfire Daily Fire Perimeter

**Branch I**  
**IRAWS-47**

123°59'0"W 123°58'0"W 123°57'0"W 123°56'0"W 123°55'0"W 123°54'0"W 123°53'0"W 123°52'0"W 123°51'0"W 123°50'0"W 123°49'0"W 123°48'0"W 123°47'0"W 123°46'0"W 123°45'0"W 123°44'0"W 123°43'0"W 123°42'0"W 123°41'0"W 123°40'0"W 123°39'0"W 123°38'0"W 123°37'0"W 123°36'0"W

42°12'0"N 42°13'0"N 42°14'0"N 42°15'0"N 42°16'0"N 42°17'0"N 42°18'0"N 42°19'0"N 42°20'0"N 42°21'0"N 42°22'0"N 42°23'0"N 42°24'0"N 42°25'0"N 42°26'0"N 42°27'0"N 42°28'0"N 42°29'0"N 42°30'0"N 42°31'0"N 42°32'0"N 42°33'0"N 42°34'0"N 42°35'0"N 42°36'0"N 42°37'0"N 42°38'0"N 42°39'0"N 42°40'0"N 42°41'0"N 42°42'0"N 42°43'0"N 42°44'0"N 42°45'0"N 42°46'0"N 42°47'0"N 42°48'0"N 42°49'0"N 42°50'0"N 42°51'0"N 42°52'0"N 42°53'0"N 42°54'0"N 42°55'0"N 42°56'0"N 42°57'0"N 42°58'0"N 42°59'0"N