

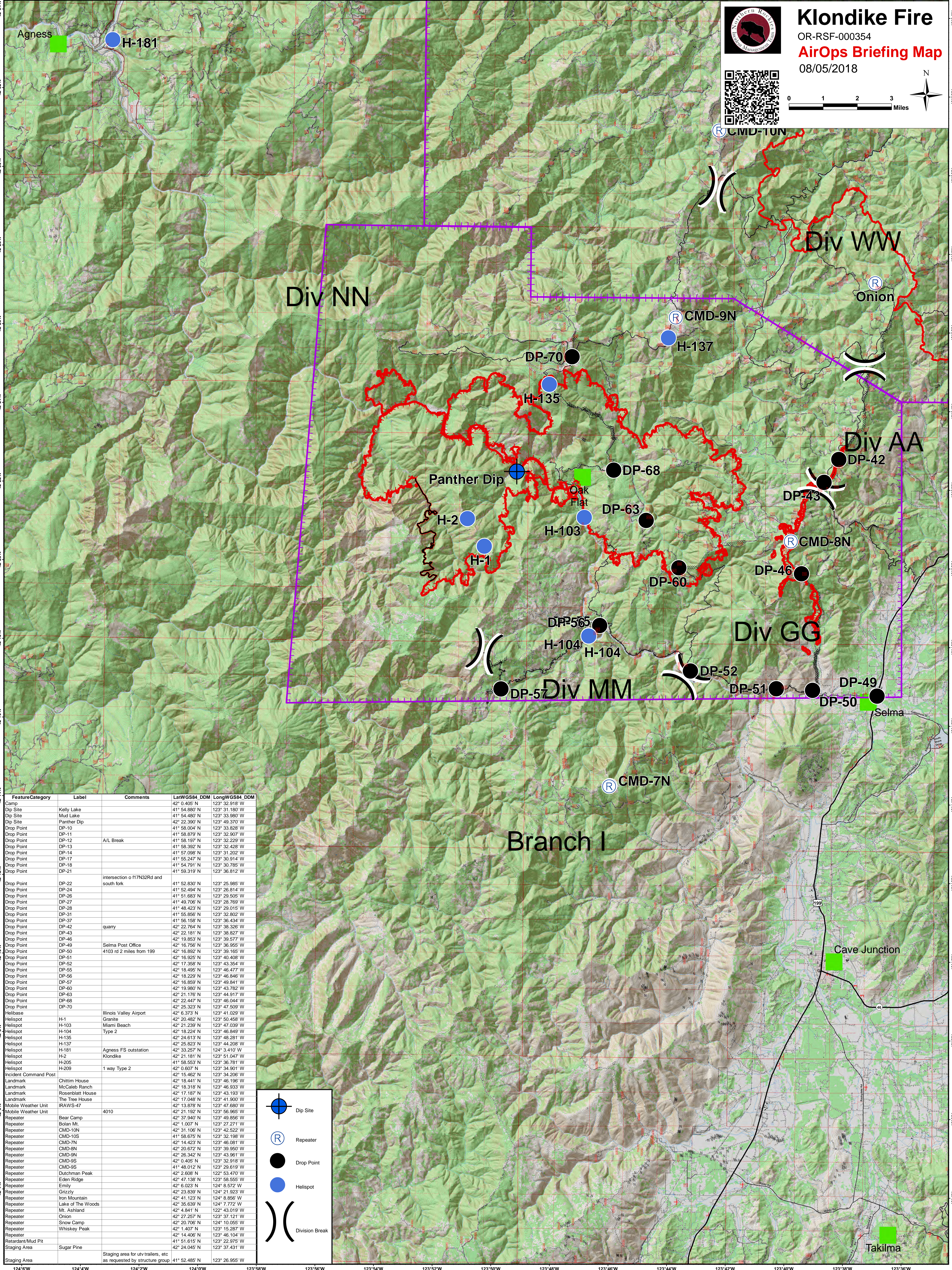
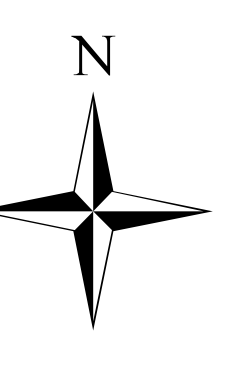
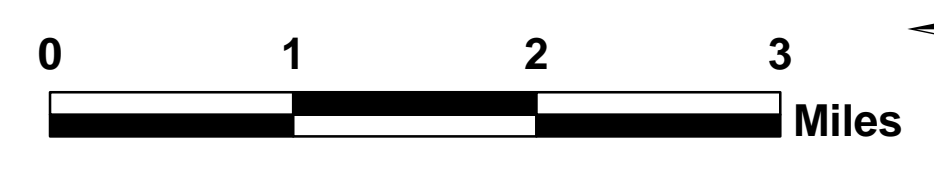


Klondike Fire

OR-RSF-000354

AirOps Briefing Map

08/05/2018



FeatureCategory	Label	Comments	LatWGS84_DDM	LongWGS84_DDM
Camp			42° 0.405' N	123° 32.918' W
Dip Site	Kelly Lake		41° 54.880' N	123° 31.180' W
Dip Site	Mud Lake		41° 54.460' N	123° 33.769' W
Dip Site	Panther Dip		42° 22.390' N	123° 49.370' W
Drop Point	DP-10		41° 58.004' N	123° 33.828' W
Drop Point	DP-11		41° 58.879' N	123° 32.907' W
Drop Point	DP-12	A/L Break	41° 58.197' N	123° 32.229' W
Drop Point	DP-13		41° 58.392' N	123° 32.428' W
Drop Point	DP-14		41° 57.098' N	123° 31.202' W
Drop Point	DP-17		41° 55.247' N	123° 30.914' W
Drop Point	DP-18		41° 54.791' N	123° 30.785' W
Drop Point	DP-21		41° 59.319' N	123° 36.812' W
Drop Point	DP-22	intersection of 117N32Rd and south fork	41° 52.830' N	123° 25.985' W
Drop Point	DP-24		41° 52.494' N	123° 26.814' W
Drop Point	DP-26		41° 51.683' N	123° 29.505' W
Drop Point	DP-27		41° 49.706' N	123° 28.769' W
Drop Point	DP-28		41° 48.423' N	123° 29.015' W
Drop Point	DP-31		41° 55.856' N	123° 32.802' W
Drop Point	DP-37		41° 56.158' N	123° 36.434' W
Drop Point	DP-42	quarry	42° 22.764' N	123° 38.326' W
Drop Point	DP-43		42° 22.181' N	123° 38.827' W
Drop Point	DP-46		42° 19.853' N	123° 39.577' W
Drop Point	DP-49	Selma Post Office	42° 16.750' N	123° 36.965' W
Drop Point	DP-50	4103 rd 2 miles from 199	42° 16.892' N	123° 39.165' W
Drop Point	DP-51		42° 16.925' N	123° 40.408' W
Drop Point	DP-52		42° 17.358' N	123° 43.354' W
Drop Point	DP-55		42° 18.495' N	123° 46.477' W
Drop Point	DP-56		42° 18.229' N	123° 46.846' W
Drop Point	DP-57		42° 16.859' N	123° 49.841' W
Drop Point	DP-60		42° 19.989' N	123° 43.762' W
Drop Point	DP-63		42° 21.176' N	123° 44.917' W
Drop Point	DP-68		42° 22.447' N	123° 46.044' W
Drop Point	DP-70		42° 25.323' N	123° 47.509' W
Helibase		Illinois Valley Airport	42° 6.373' N	123° 41.029' W
Helispot	H-1	Granite	42° 20.482' N	123° 50.458' W
Helispot	H-103	Miami Beach	42° 21.239' N	123° 47.039' W
Helispot	H-104	Type 2	42° 19.224' N	123° 46.969' W
Helispot	H-135		42° 24.613' N	123° 48.281' W
Helispot	H-137		42° 25.823' N	123° 44.208' W
Helispot	H-181	Agness FS outstation	42° 33.257' N	124° 3.410' W
Helispot	H-2	Klondike	42° 21.181' N	123° 51.047' W
Helispot	H-205		41° 58.553' N	123° 36.781' W
Helispot	H-209	1 way Type 2	42° 0.607' N	123° 34.901' W
Incident Command Post				
Landmark	Chittim House		42° 15.462' N	123° 34.206' W
Landmark	McCaleb Ranch		42° 18.318' N	123° 46.933' W
Landmark	Rosenblatt House		42° 17.187' N	123° 43.193' W
Landmark	The Tree House		42° 17.048' N	123° 41.900' W
Mobile Weather Unit	IRAWS-47		42° 13.878' N	123° 47.680' W
Mobile Weather Unit		4010	42° 21.192' N	123° 56.965' W
Repeater	Bear Camp		42° 37.940' N	123° 49.866' W
Repeater	Bolan Mt		42° 1.007' N	123° 27.271' W
Repeater	CMD-10N		42° 31.106' N	123° 42.522' W
Repeater	CMD-10S		41° 58.675' N	123° 32.198' W
Repeater	CMD-7N		42° 14.423' N	123° 46.081' W
Repeater	CMD-8N		42° 20.672' N	123° 39.950' W
Repeater	CMD-9N		42° 26.342' N	123° 43.961' W
Repeater	CMD-9S		42° 0.405' N	123° 32.918' W
Repeater	CMD-9S		41° 48.012' N	123° 29.619' W
Repeater	Dutchman Peak		42° 2.608' N	122° 53.470' W
Repeater	Eden Ridge		42° 47.138' N	123° 58.555' W
Repeater	Emily		42° 6.023' N	124° 8.572' W
Repeater	Grizzly		42° 23.839' N	124° 21.923' W
Repeater	Iron Mountain		42° 41.123' N	124° 8.856' W
Repeater	Lake of The Woods		42° 35.639' N	124° 7.772' W
Repeater	ML Ashland		42° 4.841' N	122° 43.019' W
Repeater	Onion		42° 27.257' N	123° 37.121' W
Repeater	Snow Camp		42° 20.706' N	124° 10.055' W
Repeater	Whiskey Peak		42° 1.407' N	123° 15.287' W
Repeater			42° 14.406' N	123° 46.104' W
Retardant/Mud Pit			41° 51.615' N	123° 22.975' W
Staging Area	Sugar Pine		42° 24.045' N	123° 37.431' W
Staging Area		Staging area for utv/trailers, etc as requested by structure group	41° 52.485' N	123° 26.955' W

- Dip Site
- Repeater
- Drop Point
- Helispot
- Division Break

Branch I

Cave Junction

Takilma