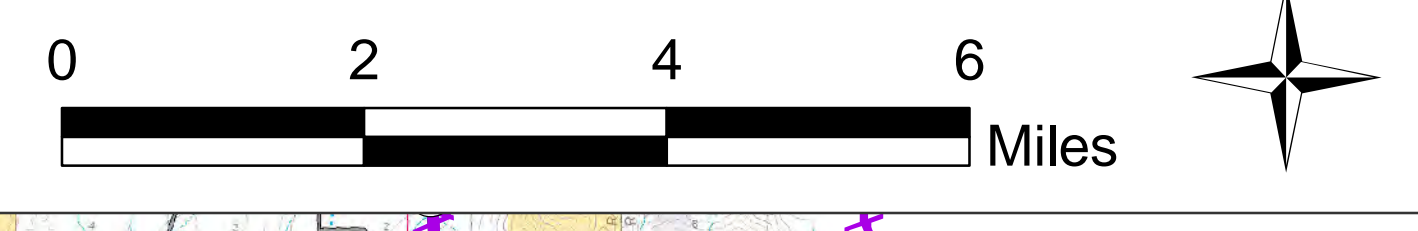
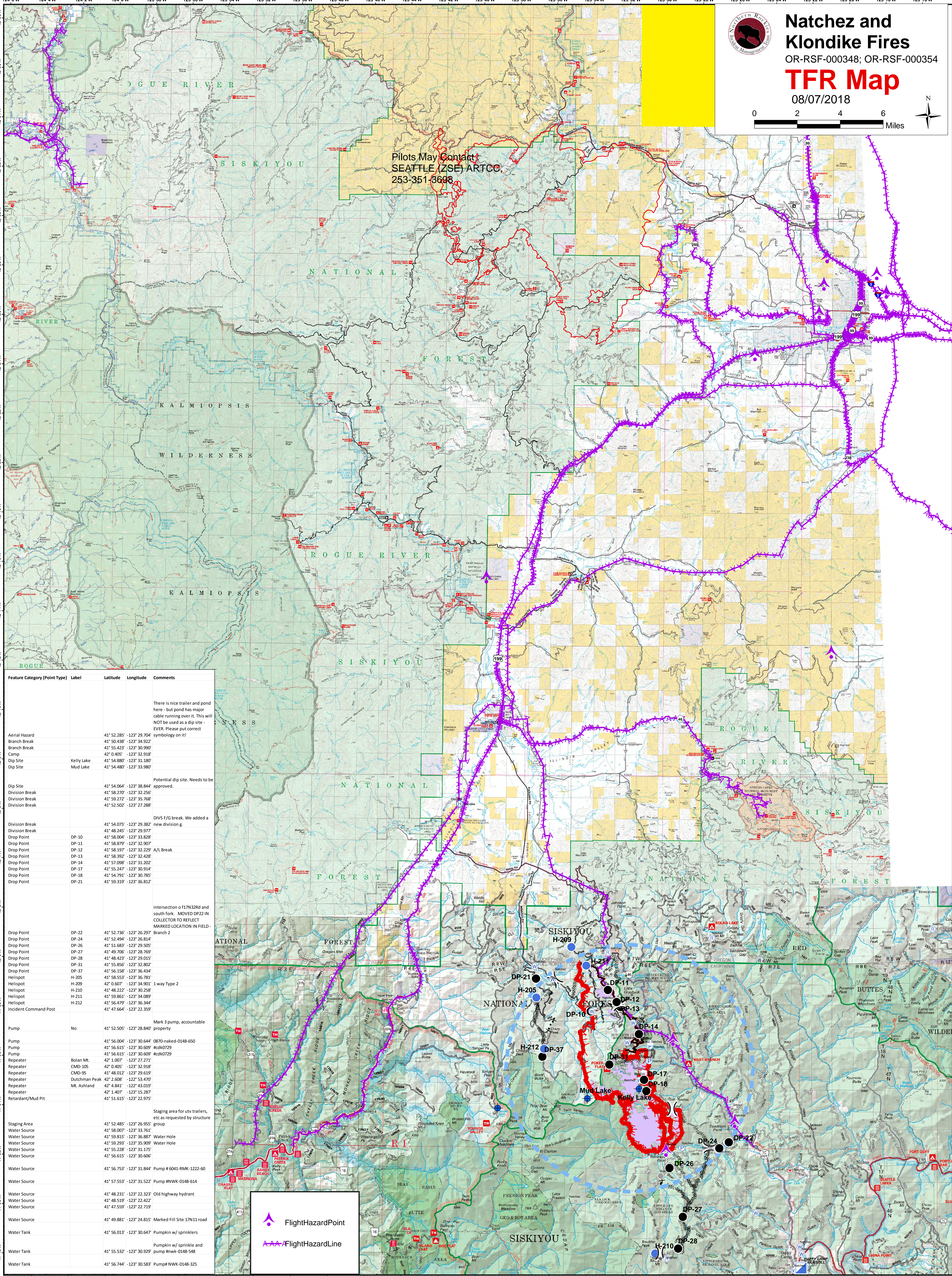




**Natchez and Klondike Fires**  
 OR-RSF-000348; OR-RSF-000354  
**TFR Map**  
 08/07/2018



Pilots May Contact  
 SEATTLE (ZSE) ARTCC,  
 253-351-3698



Feature Category (Point Type)	Label	Latitude	Longitude	Comments
				There is nice trailer and pond here - but pond has major cable running over it. This will NOT be used as a dip site - EVER. Please put correct symbology on it!
Aerial Hazard		41° 52.285' -123° 29.704'		
Branch Break		41° 50.438' -123° 34.932'		
Branch Break		41° 55.423' -123° 30.990'		
Camp		42° 0.405' -123° 32.918'		
Dip Site	Kelly Lake	41° 54.880' -123° 31.180'		
Dip Site	Mud Lake	41° 54.480' -123° 33.980'		
Dip Site				Potential dip site. Needs to be approved.
Division Break		41° 58.270' -123° 32.256'		
Division Break		41° 59.272' -123° 35.768'		
Division Break		41° 52.502' -123° 27.288'		
Division Break		41° 54.075' -123° 29.382'		DIVS F/G break. We added a new divisiong.
Drop Point		41° 48.245' -123° 29.977'		
Drop Point	DP-10	41° 58.004' -123° 33.828'		
Drop Point	DP-11	41° 58.879' -123° 32.907'		
Drop Point	DP-12	41° 58.197' -123° 32.229' A/L Break		
Drop Point	DP-13	41° 58.392' -123° 32.428'		
Drop Point	DP-14	41° 57.098' -123° 31.202'		
Drop Point	DP-17	41° 55.247' -123° 30.914'		
Drop Point	DP-18	41° 54.791' -123° 30.785'		
Drop Point	DP-21	41° 59.319' -123° 36.812'		
Drop Point	DP-22	41° 52.736' -123° 26.207'		intersection of 17N32Rd and south fork. MOVED DP22 IN COLLECTOR TO REFLECT MARKED LOCATION IN FIELD.
Drop Point	DP-24	41° 52.494' -123° 26.814'		Branch 2
Drop Point	DP-26	41° 51.683' -123° 29.505'		
Drop Point	DP-27	41° 49.706' -123° 28.769'		
Drop Point	DP-28	41° 48.423' -123° 29.015'		
Drop Point	DP-31	41° 55.856' -123° 32.802'		
Drop Point	DP-37	41° 56.158' -123° 36.434'		
Helispot	H-205	41° 58.553' -123° 36.781'		
Helispot	H-209	42° 0.607' -123° 34.901'		1 way Type 2
Helispot	H-210	41° 48.222' -123° 30.258'		
Helispot	H-211	41° 59.861' -123° 34.089'		
Helispot	H-212	41° 56.479' -123° 36.344'		
Incident Command Post		41° 47.664' -123° 22.359'		
Pump	No	41° 52.505' -123° 28.840'		Mark 3 pump, accountable property
Pump		41° 56.004' -123° 30.644'		0870-naked-0148-650
Pump		41° 56.615' -123° 30.609'		redk0729
Pump		41° 56.615' -123° 30.609'		redk0729
Repeater	Bolan Mt.	42° 1.007' -123° 27.271'		
Repeater	CMD-105	42° 0.405' -123° 32.918'		
Repeater	CMD-95	41° 48.012' -123° 29.619'		
Repeater	Dutchman Peak	42° 2.608' -123° 53.470'		
Repeater	Mt. Ashland	42° 4.841' -123° 36.887'		
Repeater		42° 1.407' -123° 15.287'		
Retardant/Mud Pit		41° 51.615' -123° 22.975'		
Staging Area		41° 52.485' -123° 26.955'		Staging area for utv trailers, etc as requested by structure group
Water Source		41° 58.007' -123° 33.761'		
Water Source		41° 59.815' -123° 36.887'		Water Hole
Water Source		41° 59.293' -123° 35.909'		Water Hole
Water Source		41° 55.228' -123° 31.175'		
Water Source		41° 56.615' -123° 30.606'		
Water Source		41° 56.753' -123° 31.844'		Pump # 6041-RMK-1222-60
Water Source		41° 57.553' -123° 31.522'		Pump #NWK-0148-614
Water Source		41° 48.231' -123° 22.233'		Old highway hydrant
Water Source		41° 48.519' -123° 22.422'		
Water Source		41° 47.559' -123° 22.719'		
Water Source		41° 49.881' -123° 24.815'		Marked Fill Site 17N11 road
Water Tank		41° 56.013' -123° 30.647'		Pumpkin w/ sprinklers
Water Tank		41° 55.532' -123° 30.929'		pump #nw-0148-548
Water Tank		41° 56.744' -123° 30.583'		Pump# NWK-0148-325

FlightHazardPoint  
 FlightHazardLine